



## PARALLEL LEGACIES: YESTERDAY AND TODAY

HOW THE BROWNFIELD REDEVELOPMENT  
OF DEPOT PARK ACTIVATED

SOUTH MAIN STREET AND A LONGTIME  
FAMILY REDEVELOPMENT PLAN

AT SOUTH MAIN STATION

The history of our property has always been intertwined with Depot Park, the old train depot that sits directly across Depot Avenue from South Main Station.

- Both properties have played a foundational role in Gainesville's development.
- Pictured here – the Dutton cotton gin circa 1883. *Photo courtesy of the Matheson History Museum.*





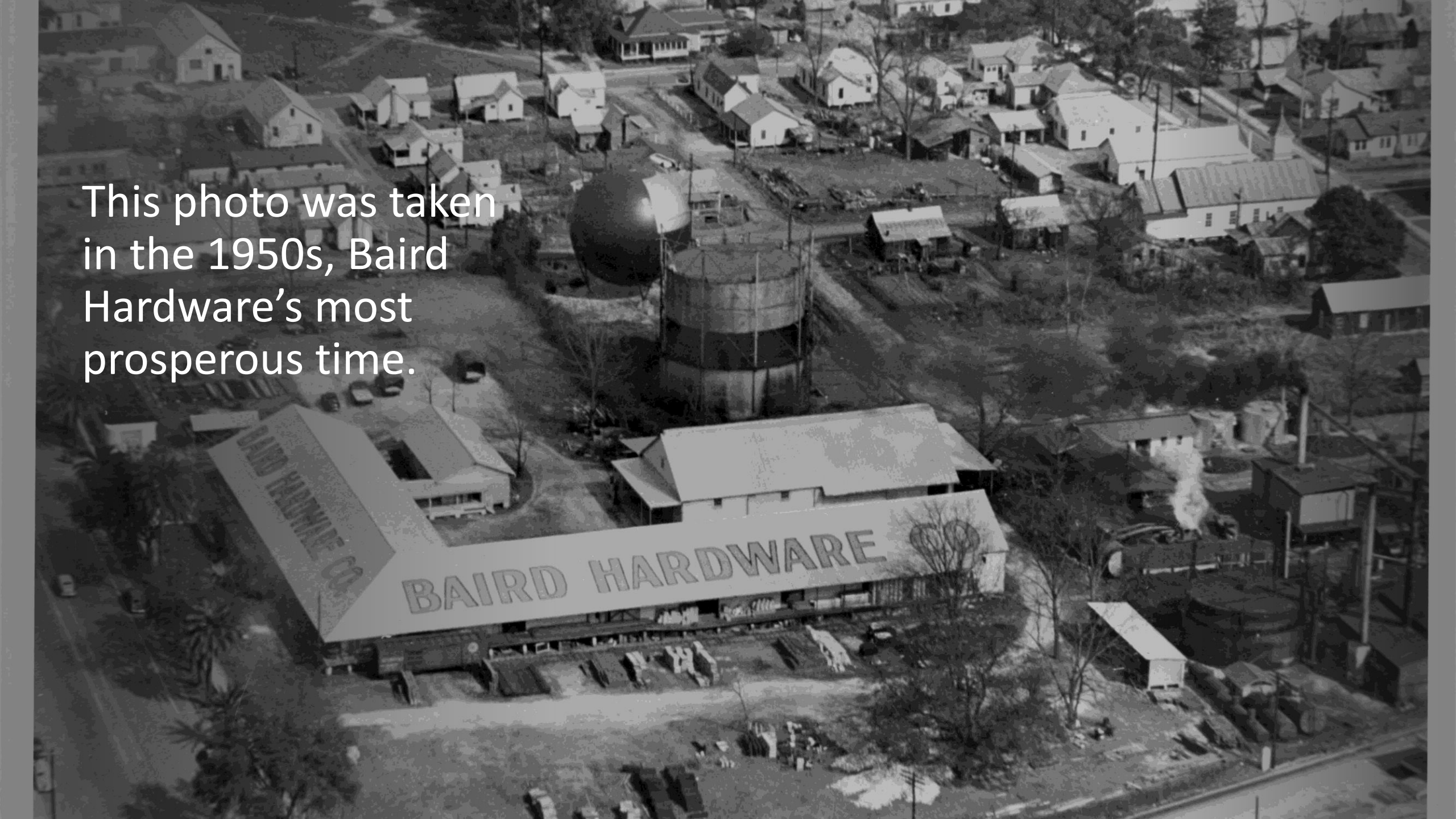


Baird Hardware's retail store in downtown Gainesville was described as "virtually the hub of all social and retail activity in the city."

This photo was taken  
in the 1950s, Baird  
Hardware's most  
prosperous time.

BAIRD HARDWARE

BAIRD HARDWARE CO.







This photo from 1950 shows the first full train car of Mercury outboard motors arriving at the loading deck on the south facade.

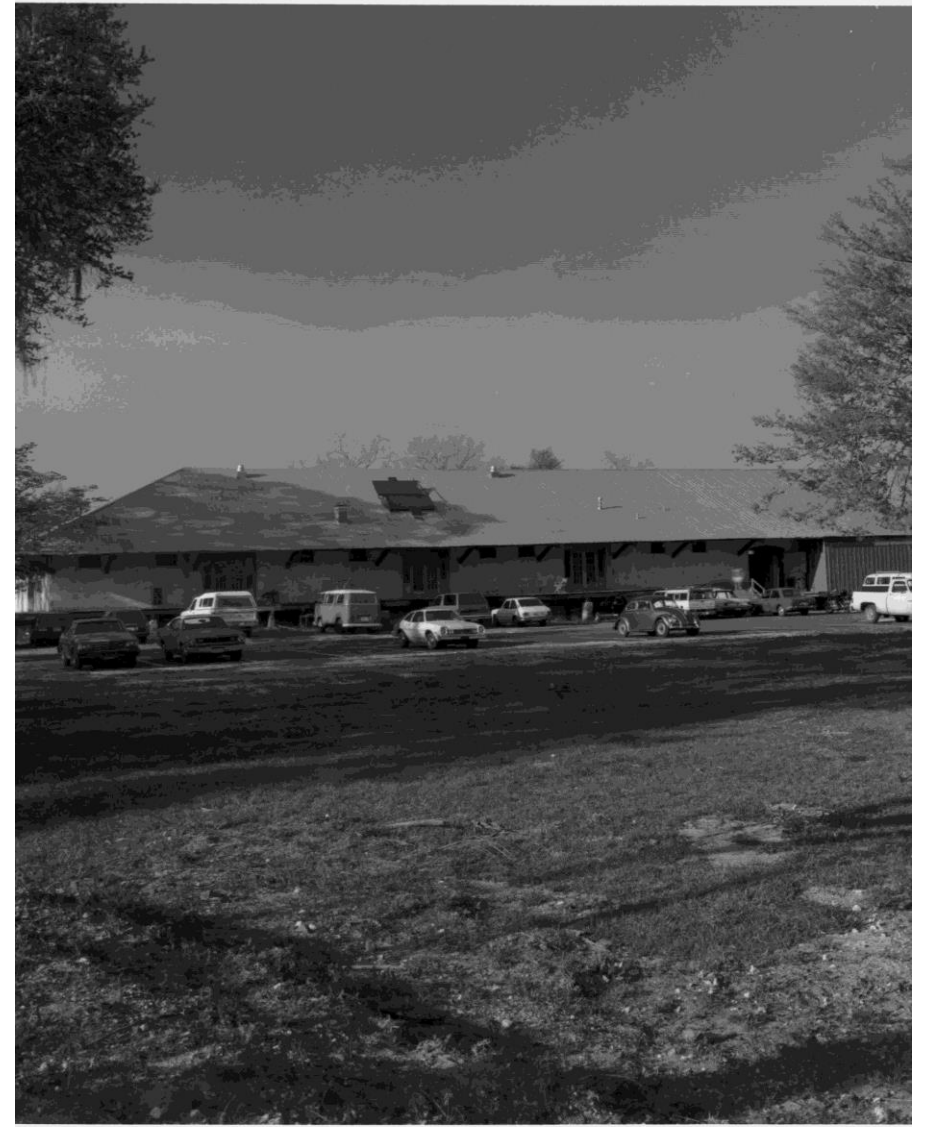




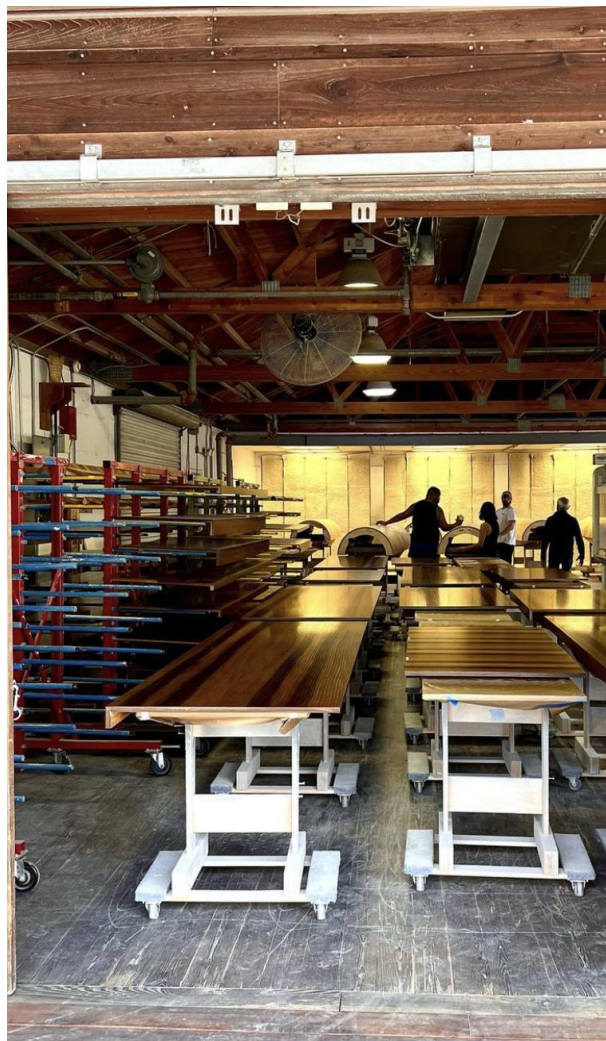




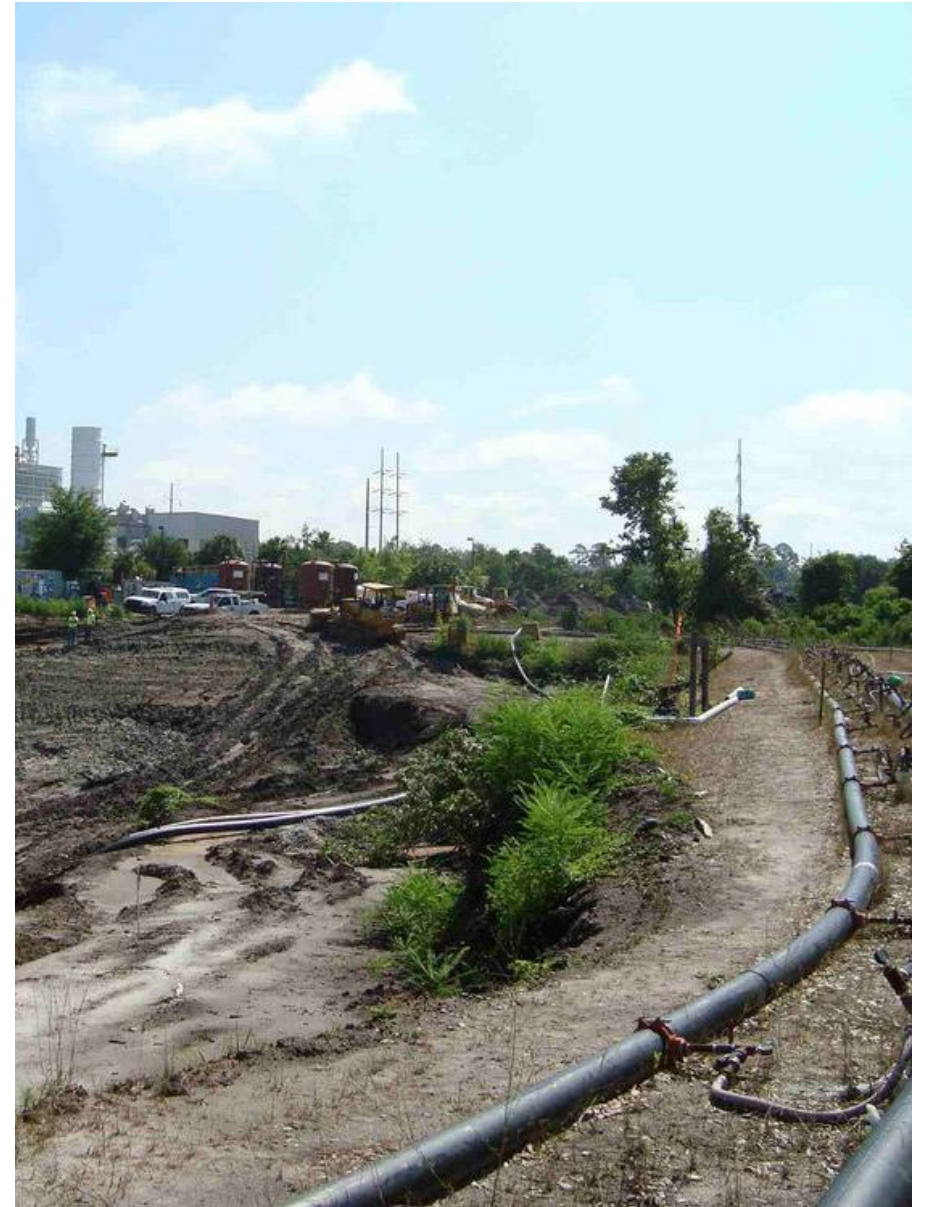




























The crowd at Heartwood's annual  
Tom Petty Weekend in 2022











Top photo is from a special edition of The Gainesville Sun in 1954 celebrating Gainesville's Centennial Anniversary. The Baird Center is 64 years old here.

Hoch Shitama bought one of the box trucks pictured here when he bought the property.

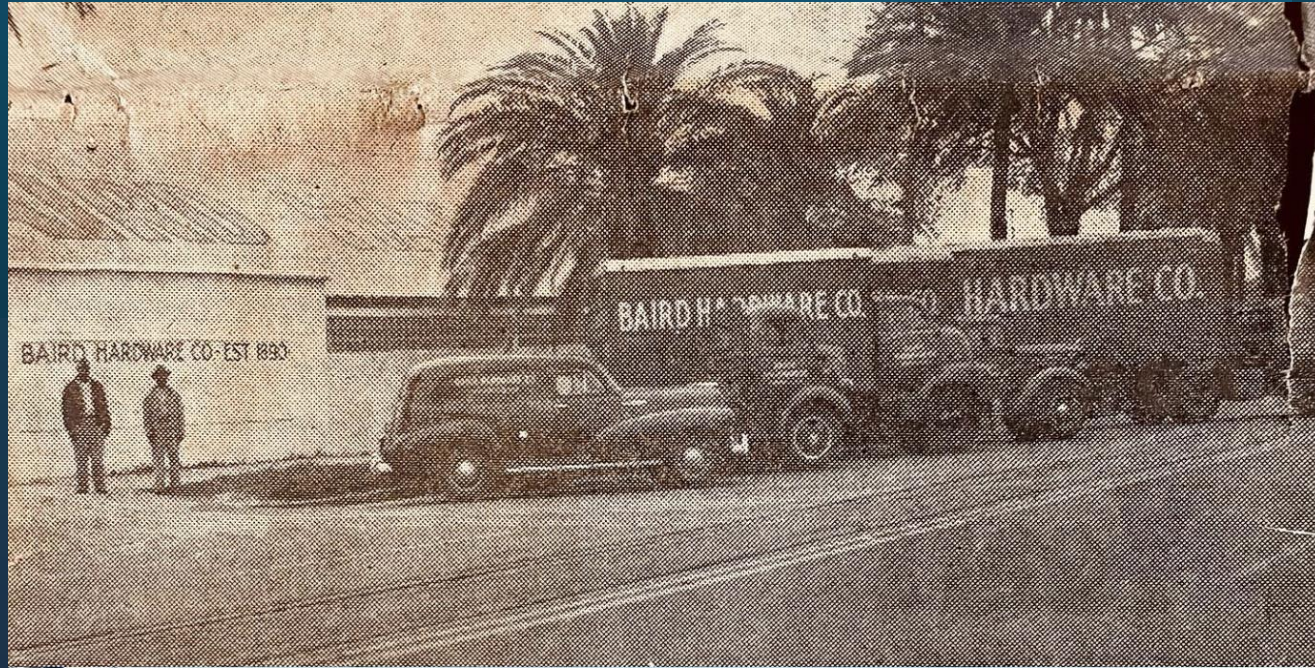


Photo below shows a mural by local artist Steven Speir that was done in 2022 as part of the first Business Improvement Grant we received from the GCRA.

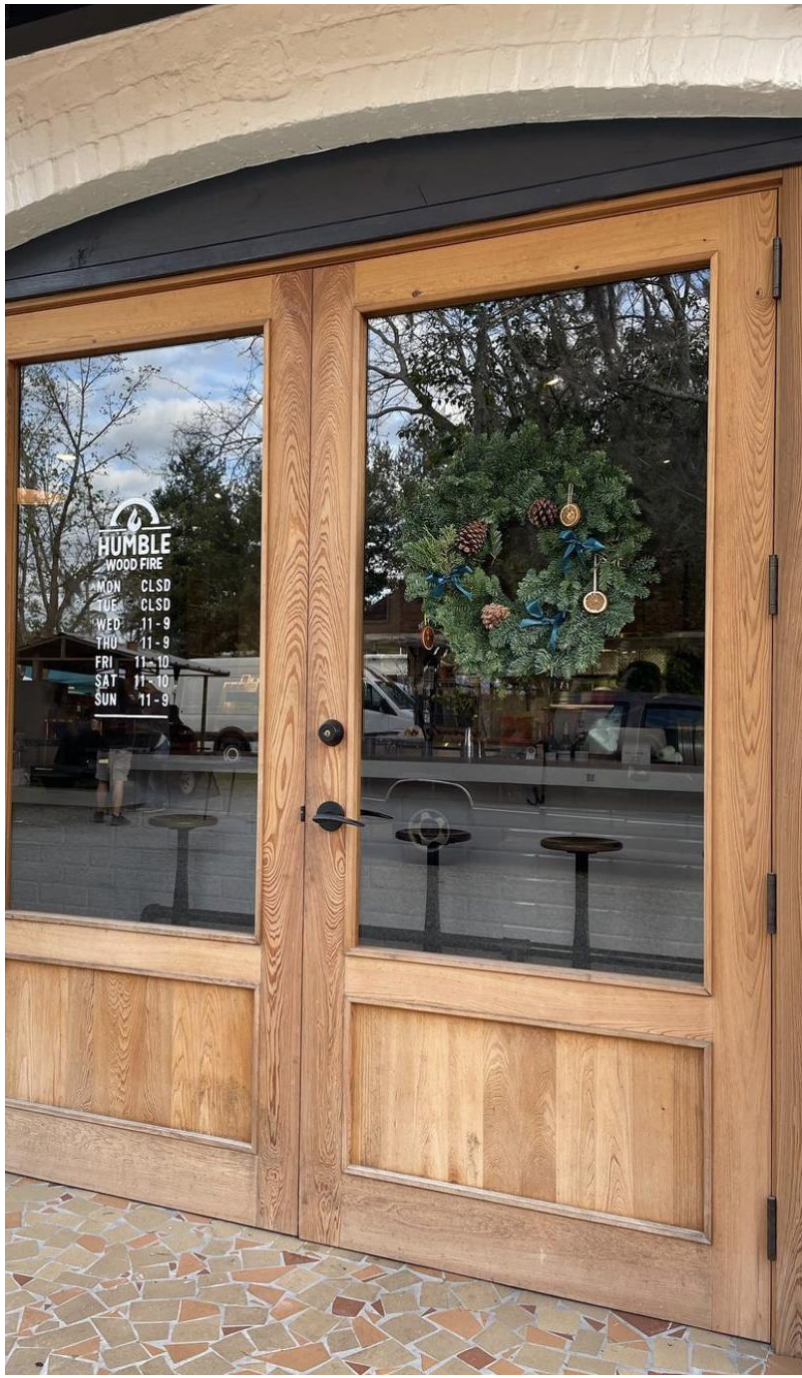






















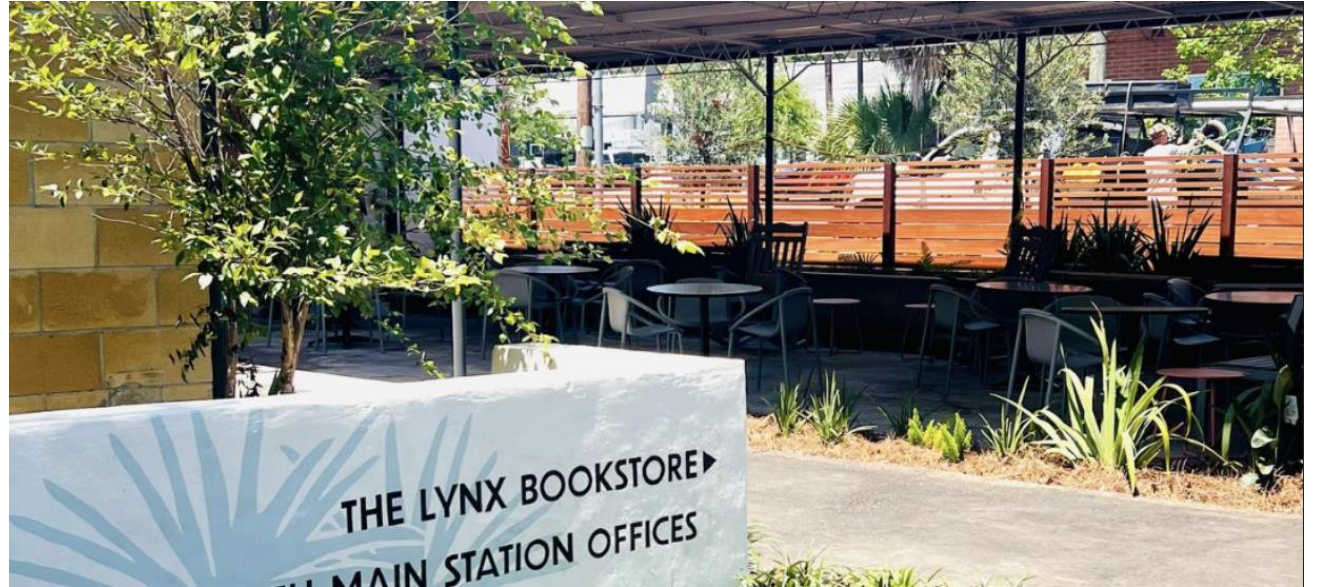


January 2024 before we started work on the project for the 601 Business Improvement Grant























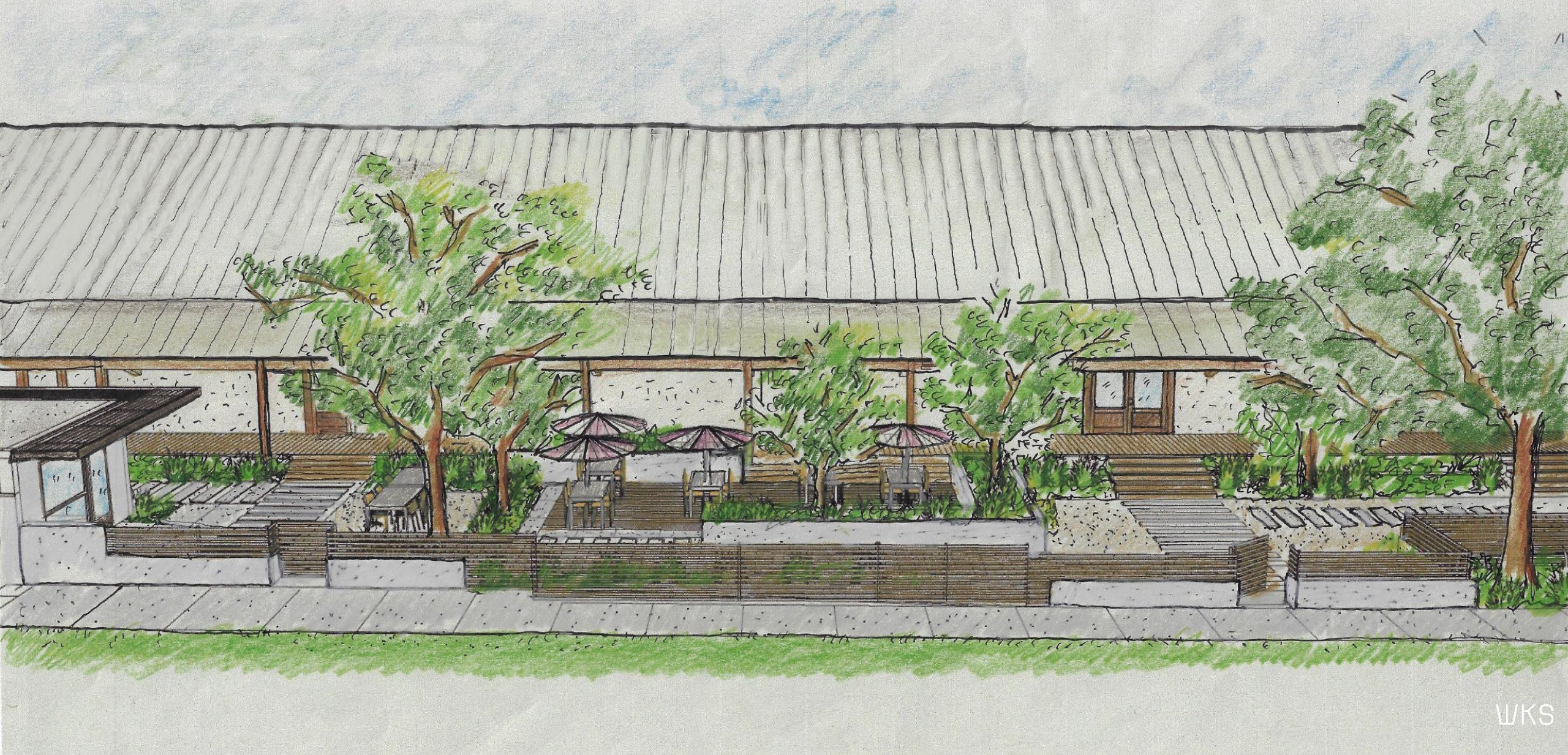






WKS



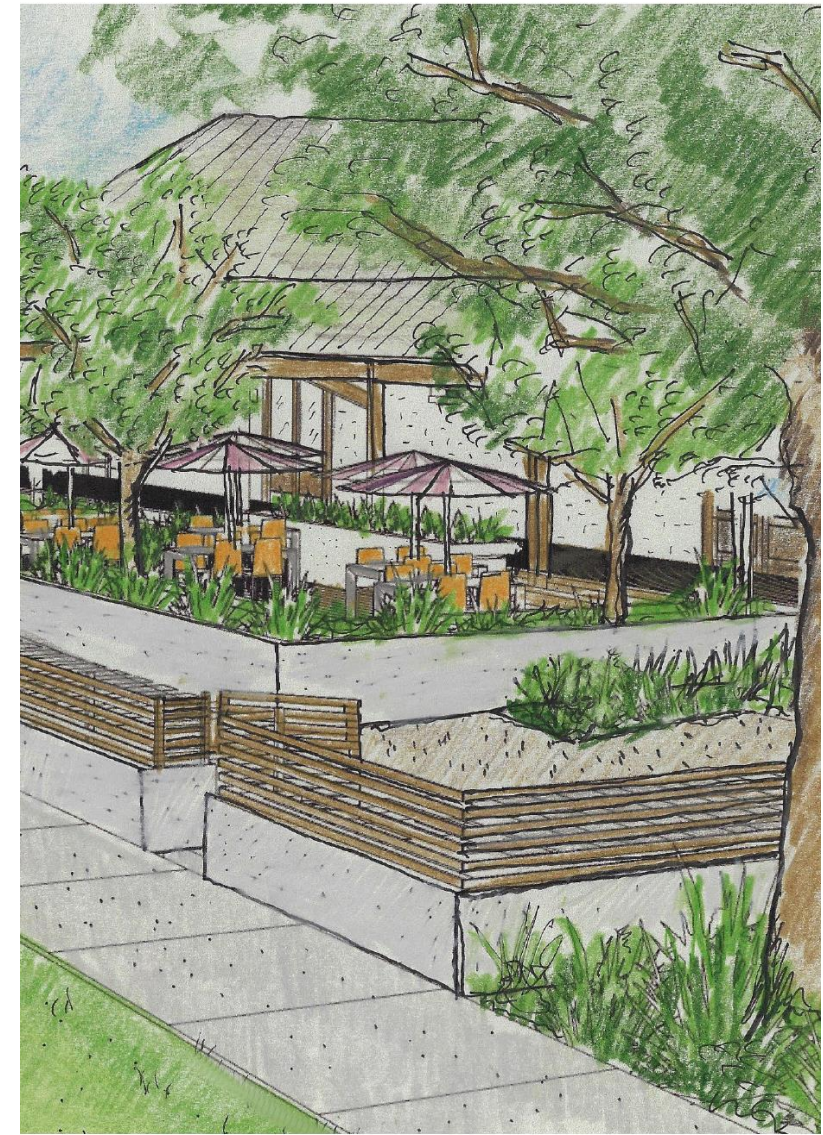


WKS





MAIN STREET CORRIDOR IMPROVMENTS  
PERSPECTIVE SKETCH 3: SIDEWALK LOOKING SOUTH



MAIN STREET CORRIDOR IMPROVMENTS  
PERSPECTIVE SKETCH 4: SIDEWALK LOOKING NORTH



