



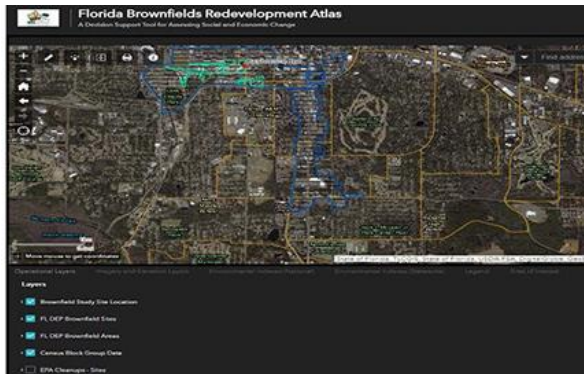
Participatory Brownfields Redevelopment in the University Area Community, Tampa



Our mission is to leverage interdisciplinary scientific expertise at the University of South Florida to inform outcome-driven research on environmental toxicants, land use legacies, community health, environmental justice, and sustainable and equitable development.

USF UNIVERSITY OF
SOUTH FLORIDA
CENTER FOR BROWNFIELDS
RESEARCH & REDEVELOPMENT

RESEARCH



**Florida Brownfields
Redevelopment Atlas: A
Decision Support Tool**

**U.S. EPA Section 128(a)
funding through the Florida
Department of Environmental
Protection, 2017-2022**

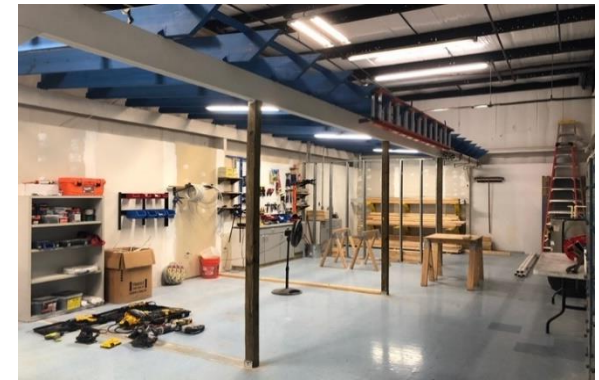
REDEVELOPMENT



**Brownfields Area-Wide
Planning for the University
Area Community**

**U.S. EPA Brownfields Area-
Wide Planning Grant, 2017-
2019; U.S. EPA Community-
wide Assessment Grant,
2019-2022**

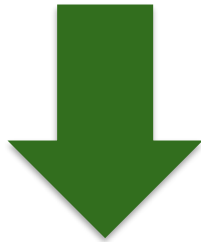
EDUCATION



**Environmental Workforce
Development and Job
Training Program for East
Tampa**

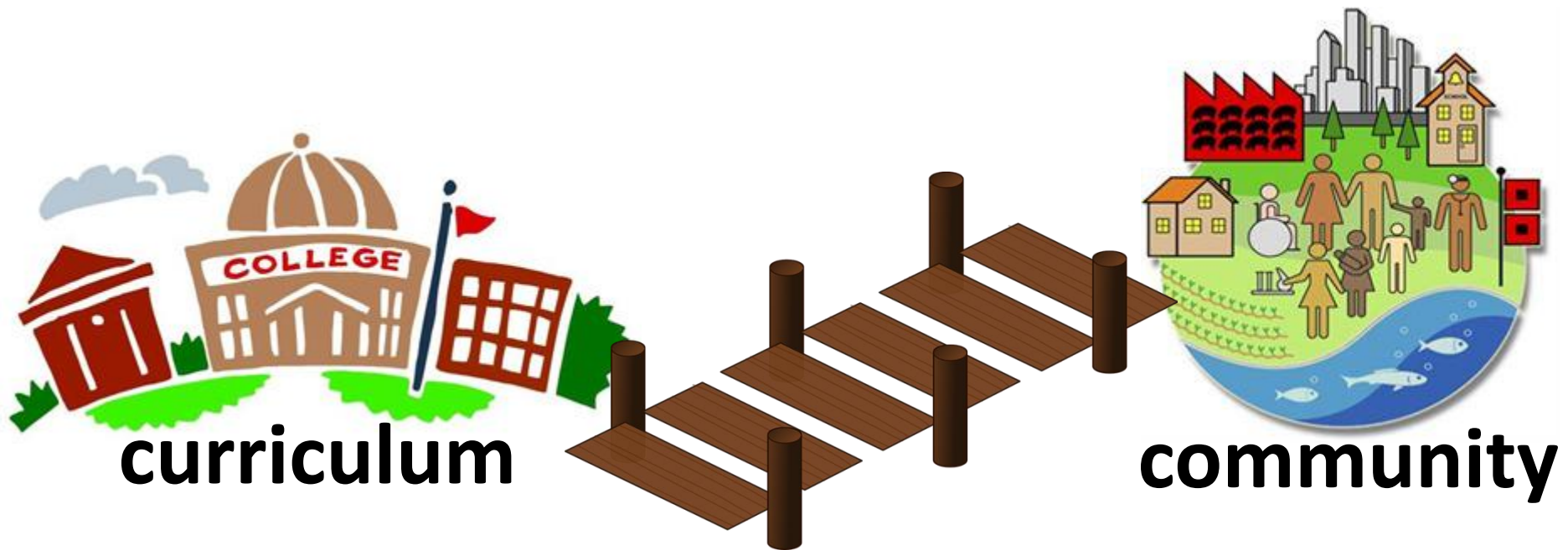
**U.S. EPA Environmental
Workforce Development and
Job Training Grant, 2020-
2022**

Brownfields are defined by the U.S. Environmental Protection Agency as properties—“the expansion, redevelopment, or reuse of which may be complicated by the presence or potential presence of a hazardous substance, pollutant, or contaminant.”



Healthfields are former brownfield properties that have been redeveloped to improve access to healthcare and healthy living, such as health clinics, community gardens, farmers markets, and recreational parks.





...promote the work of environmental justice by leveraging students' developing skills (in writing, conducting interviews, GIS, and research) and their privileged access to resources (such as time, computers, data, and scholarship) to facilitate community-identified agendas and efforts



College/Underserved Community Partnership Program

U.S. Environmental Protection Agency

The College/ Underserved Community Partnership Program (CUPP) enlists colleges and universities to assist communities with environmental justice challenges through student internships, practicums, and capstone projects.

- Communities receive technical assistance and services on a voluntary basis at no cost.
- Students gain practical experience in developing solutions to enhance the quality of life for communities as well as academic credit through their home institution.
- CUPP has facilitated over 120 partnership projects with more than 70 communities and academic institutions, and the value of services provided to underserved communities is over \$45,000,000.

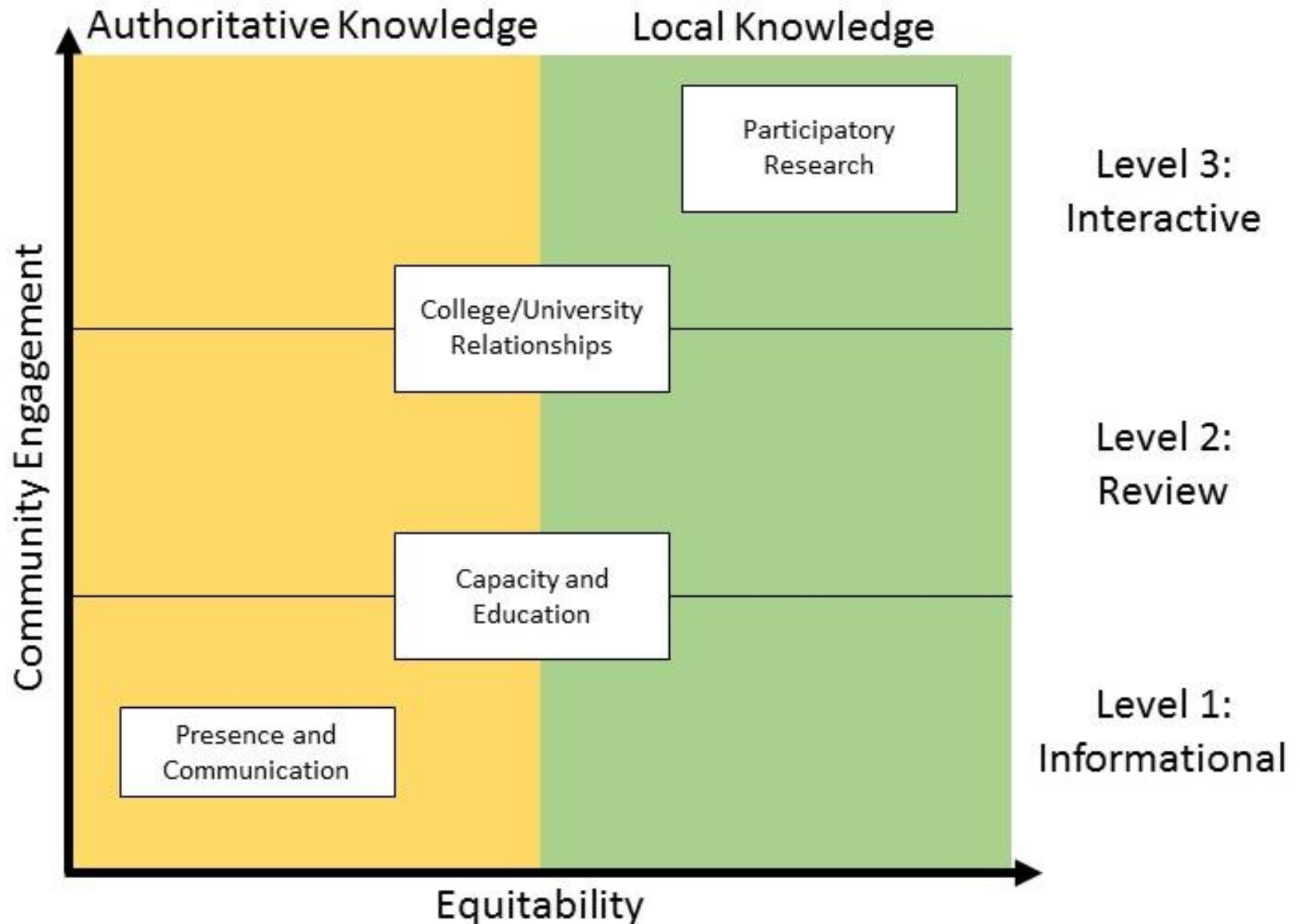
Participatory Action Research for Brownfields Redevelopment

Brownfields-PAR is an approach to learning about environmental toxicants and public health that brings together researchers and residents who work collaboratively to affect positive change using rapid ethnographic assessments:

- To identify brownfields and related redevelopment challenges in the community
- To empower community members to conduct research and create lasting solutions to problems
- To improve human and environmental health in the community and promote equitable development



Model for Stakeholder Engagement



Phase I: Problem Identification

PhotoVoice > Freelisting > Pile-sorting > Exhibition > Focus Group



Phase I: Problem Identification

PhotoVoice > Freelisting > Pile-sorting > Exhibition > Focus Group



Phase I: Problem Identification

PhotoVoice > Freelisting > **Pile-sorting > Exhibition > Focus Group**



PhotoVoice > Freelisting > Pile-sorting > Exhibition > Focus Group



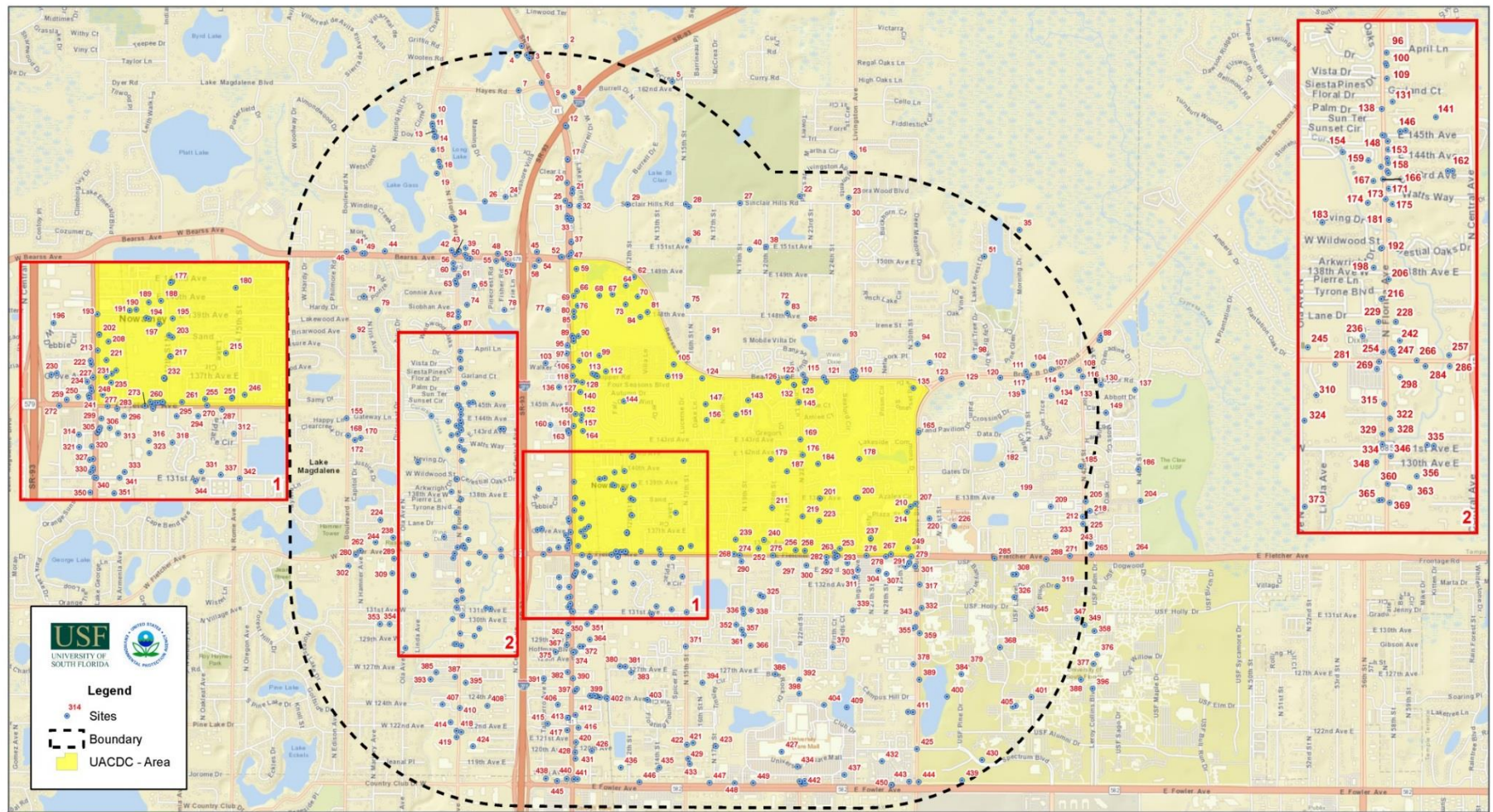
Phase I: Problem Identification

PhotoVoice > Freelisting > Pile-sorting > Exhibition > Focus Group



Phase II: Precision Intervention

Inventory > Ground-truthing > Kobo Survey > Community Workshop



This map and all data contained within are supplied as is with no warranty. Cardno Inc. expressly disclaims responsibility for damages or liability from any claims that may arise out of the use or misuse of this map. It is the sole responsibility of the user to determine if the data on this map meets the user's needs. This map was not created as survey data, nor should it be used as such. It is the user's responsibility to obtain proper survey data, prepared by a licensed surveyor, where required by law.

University Area Community
Brownfields Environmental Inventory

ALLSITES



380 Park Place Boulevard, Suite 300, Clearwater, FL 33759 USA
Phone (+1) 727.531.3505 Fax (+1) 727.539.1294
www.cardno.com

Phase II: Precision Intervention


Inventory > Ground-truthing > Kobo Survey > Community Workshop



Phase II: Precision Intervention


Inventory > Ground-truthing > **Kobo Survey** > Community Workshop



HOME FEATURES GET STARTED ABOUT US CONTACT SUPPORT

kobotoolbox.org

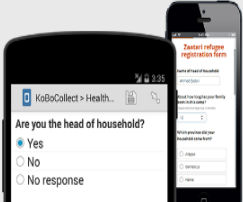
FEATURES



BUILD FORMS AND REUSE EXISTING QUESTIONS

Easily create survey forms through our intuitive and powerful tool. Store recurring questions in your library or share them with colleagues.

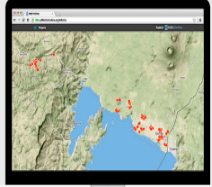
[read more](#)



COLLECT DATA

Quickly and reliably collect your survey data on Android, iOS, and many other devices, online or offline, in any language and with complex skip logic.

[read more](#)



ANALYZE AND MANAGE DATA

Inspect your data moments after it was collected - or download it for advanced analysis in other software in Excel, CSV, KML, and other formats.

[read more](#)

Phase II: Precision Intervention

Inventory > Ground-truthing > Kobo Survey > Community Workshop



University Area Community

- Urban disadvantaged unincorporated community
- History of racial segregation
- High residential densities
- High proportions of renters
- Aging housing stock
- Proximity to hazardous wastes
- Lack of critical infrastructures



News Channel

USF News > USF Awarded EPA Grant to Help University Community

USF Awarded EPA Grant to Help University Community Area Plan New Uses for Former Brownfield Sites

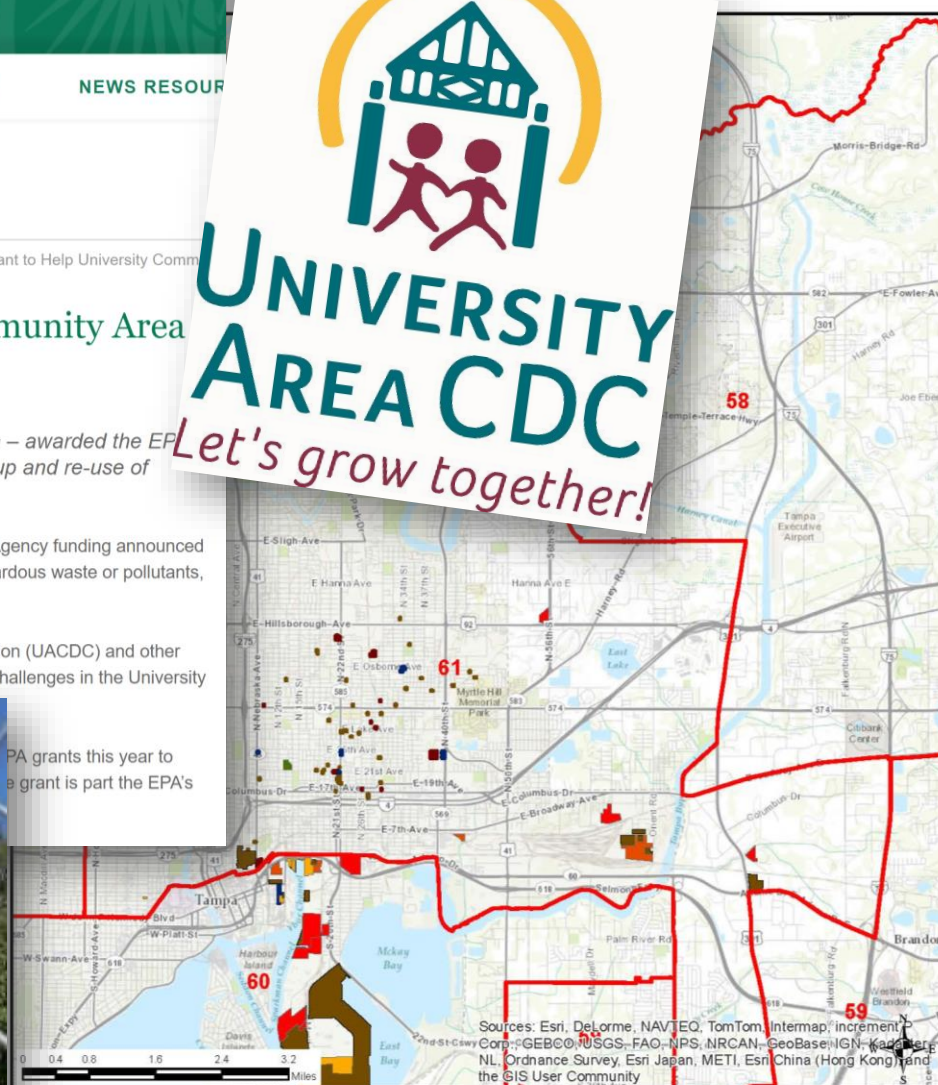
USF was one of 19 institutions and municipalities – and the only recipient in Florida – awarded the EPA grants this year to engage the community and conduct planning activities for cleanup and re-use of brownfield sites.

The University of South Florida received a portion of \$3.8 million in U.S. Environmental Protection Agency funding announced Jan. 5 to help communities plan new uses for former brownfield sites – land contaminated with hazardous waste or pollutants, or perceived to be so.

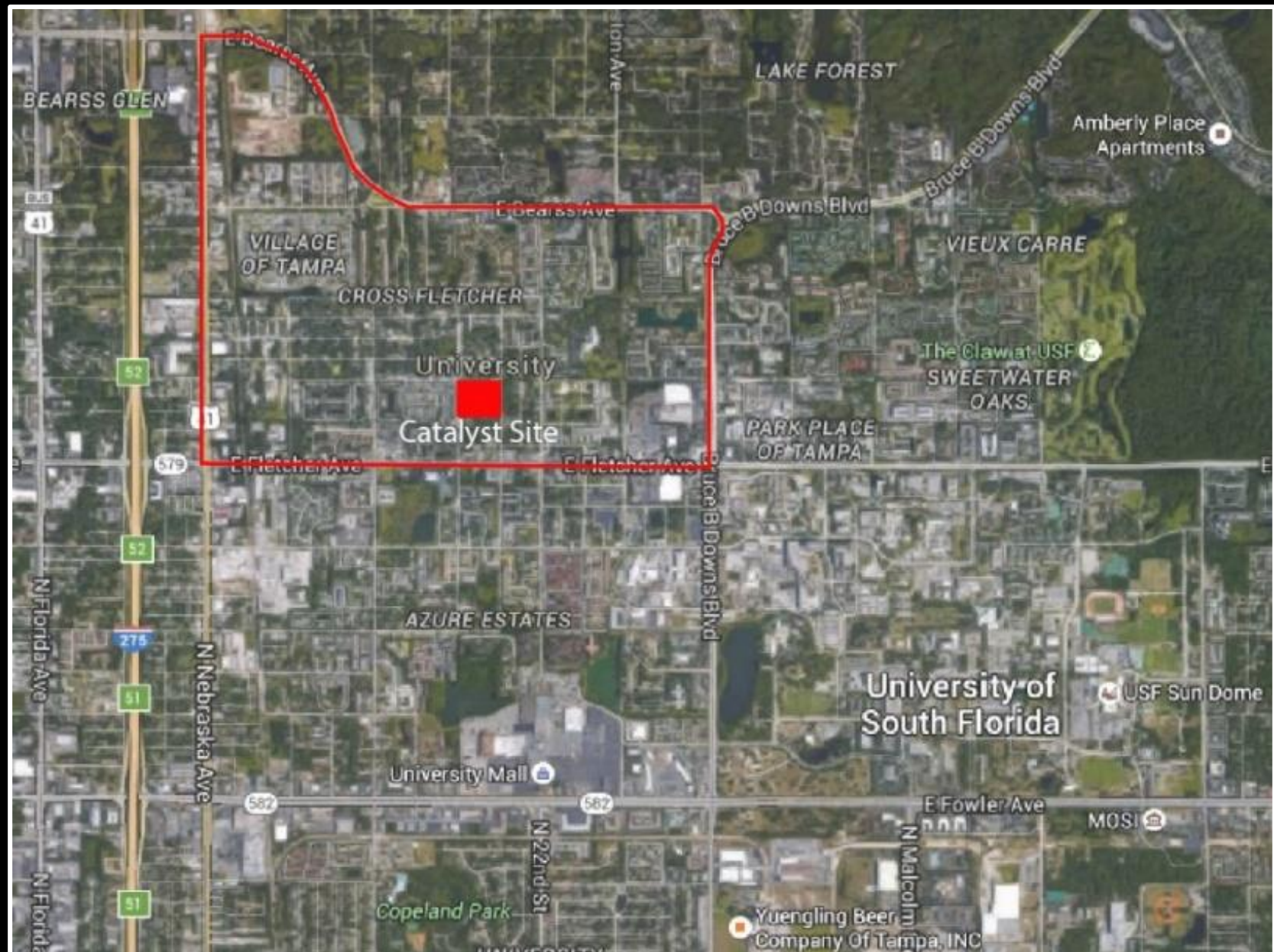
USF received a \$200,000 grant to work with the University Area Community Development Corporation (UACDC) and other organizations to create a strategic plan for addressing environmental pollution and redevelopment challenges in the University



PA grants this year to
a grant is part the EPA's



ABANDONED PROPERTIES NEAR USF HURTING DEVELOPMENT
NEW EFFORTS TO 'FIGHT THE BLIGHT'



PROJECT ACTIVITIES

Environmental Inventory
Economic Market Analysis
Rapid Health Assessment
Social Impact Assessment
Needs-based Assessment
GIS for Redevelopment Planning
Community Outreach
Community Design Charrette
Community Advisory Board
Key-informant interviews
Strategic Communication & Marketing







University Area Harvest Hope Park Online Discovery Tool

Harvest Hope Center

Open Data Explorer

About Harvest Hope

Harvest Hope Park sits in the heart of the University Area community, on 7 acres of land where development plans are underway to build a friendly space for residents that encourages family play, healthy eating, environmental sustainability, education and community interactions. The park will consist of a community garden, harvest hope teaching kitchen, sports field, playground, walking trail and tilapia fish pond. For more information about Harvest Hope Park along with other community projects and events,



<http://hhcusf-usfaist.opendata.arcgis.com>

University Area Harvest Hope Park

Website: uacleanup.com



[HOME](#) [ABOUT](#) [RESEARCH](#) [PARTNERS](#) [CONTACT](#)



Brownfields Area-Wide Plan for the University Area Community

[ABOUT THE PROJECT](#)

University Area Community Brownfields Area-Wide Plan



B
E
F
O
R
E



A
F
T
E
R

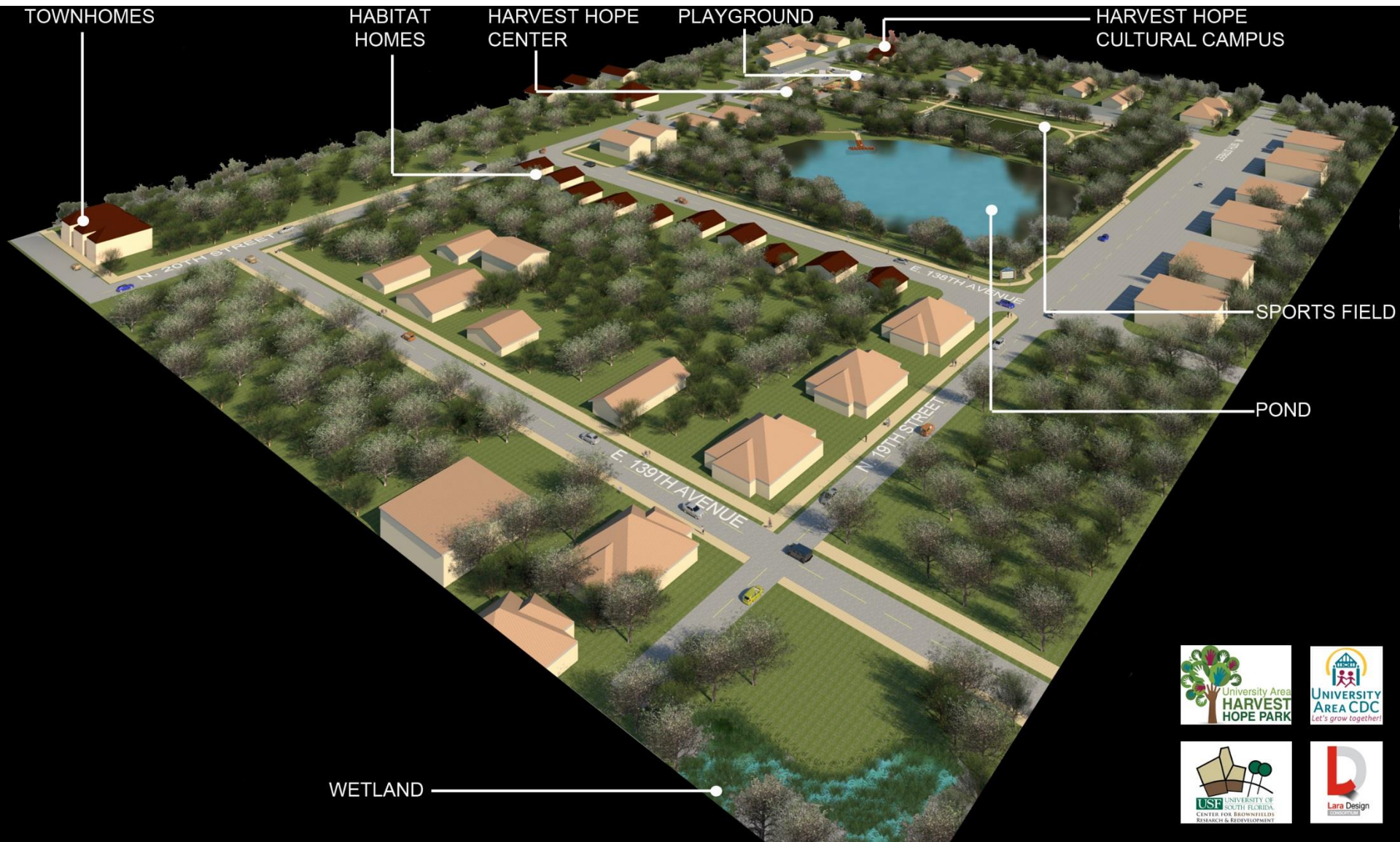
Place-Making in the University Area Community

VISION: Harvest Hope Park



Place-Making in the University Area Community

VISION: Harvest Hope Housing



THANK YOU!
Christian Wells
ecwells@usf.edu
usf.edu/brownfields

