



The Florida Brownfields Redevelopment Atlas

An Online Decision-Support Tool for Environmental Remediation and Community Revitalization

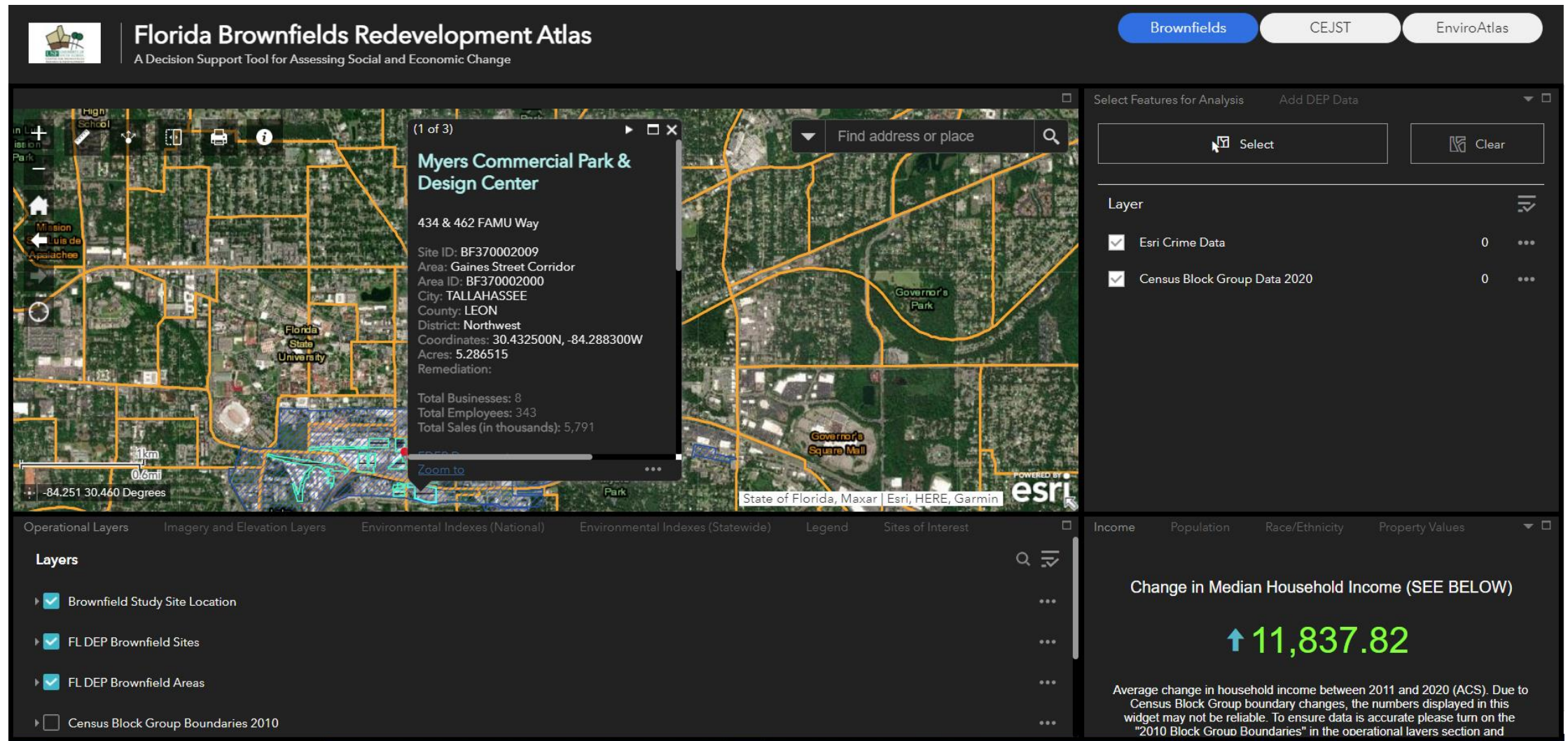
USF UNIVERSITY OF
SOUTH FLORIDA.
CENTER FOR BROWNFIELDS
RESEARCH & REDEVELOPMENT



Both the U.S. EPA and Florida DEP would like to better understand the impacts of State and Tribal Response Program funding (made available from CERCLA section 128(a) grants) that are provided to eligible communities who have demonstrated a need for assistance for assessment and remediation work in advance of planned and agreed-upon brownfields redevelopment.

The FDEP manages the work through either Targeted Brownfield Assessments (TBA) or Site-Specific Assessments (SSA) and/or remediation activities with the intent of gaining regulatory closure in advance of planned future development.

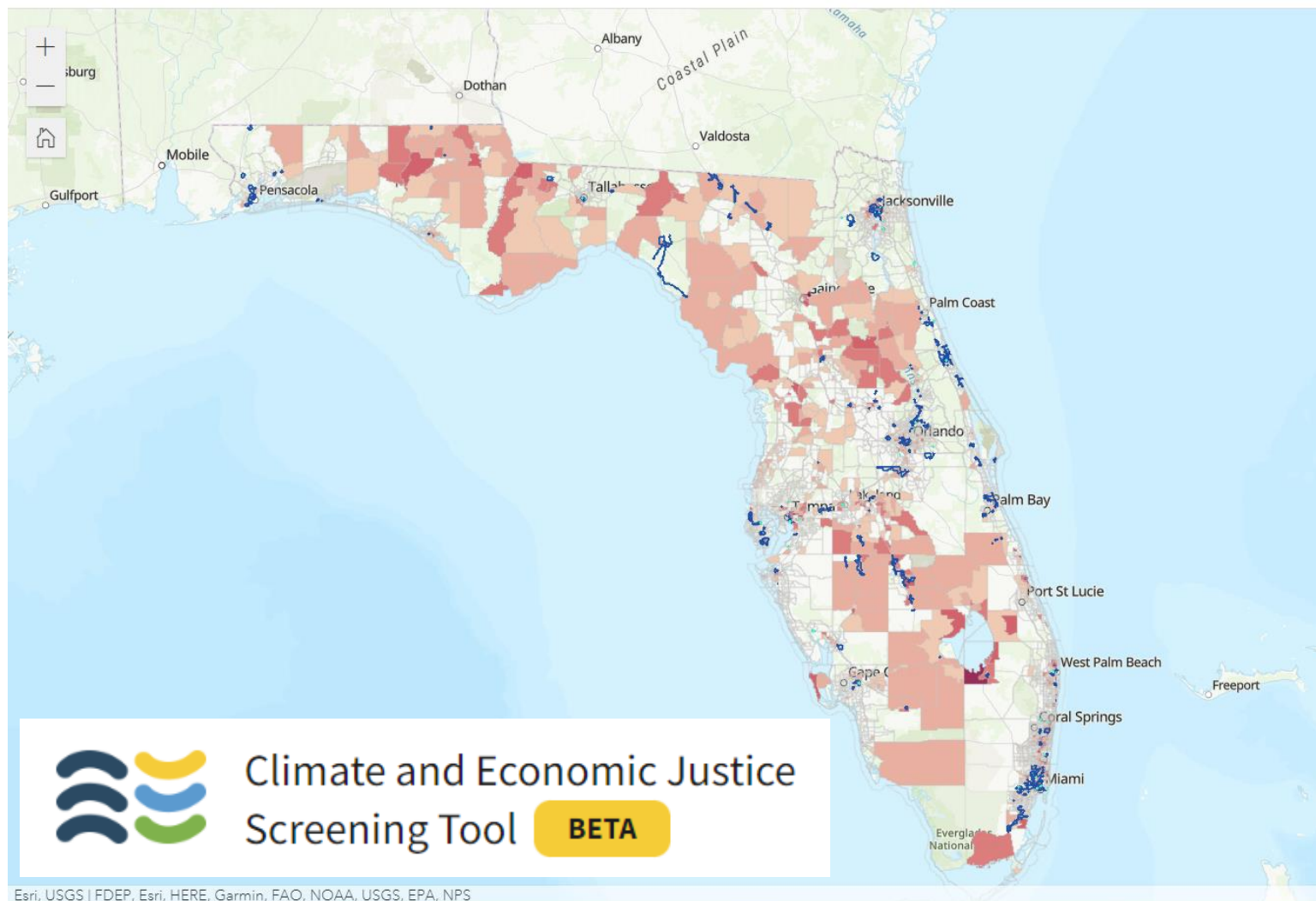
This project evaluates and recommends options for determining social and economic impacts associated with redeveloped brownfield sites across Florida where cleanup activities were funded by the SRP.



The **Florida Brownfields Redevelopment Atlas** is an online discovery tool that allows users to explore, summarize, and extract various types of environmental and socioeconomic data, with an emphasis on change over time, at the census block group level for the entire state of Florida.



Data are summarized to display trends over time for population, income, ethnicity, property values, crime, and environmental health, among other indicators.



Brownfields

CEJST

EnviroAtlas

FL DEP Brownfield Sites

FL DEP Brownfield Areas

Justice40 Tracts May 2022

Total categories exceeded

8

7

6

5

4

3

2

1

0



Brownfields

CEJST

EnviroAtlas

FL DEP Brownfield Sites

FL DEP Brownfield_Areas

FL DEP Brownfield Sites

FL DEP Brownfield_Areas

[TC] Brownfields Properties (ACRES)

[TC] Permitted Water Dischargers (Major; NPDES)

[TC] Permitted Water Dischargers (NPDES)

[TC] Air Quality System (AIRS AQS)

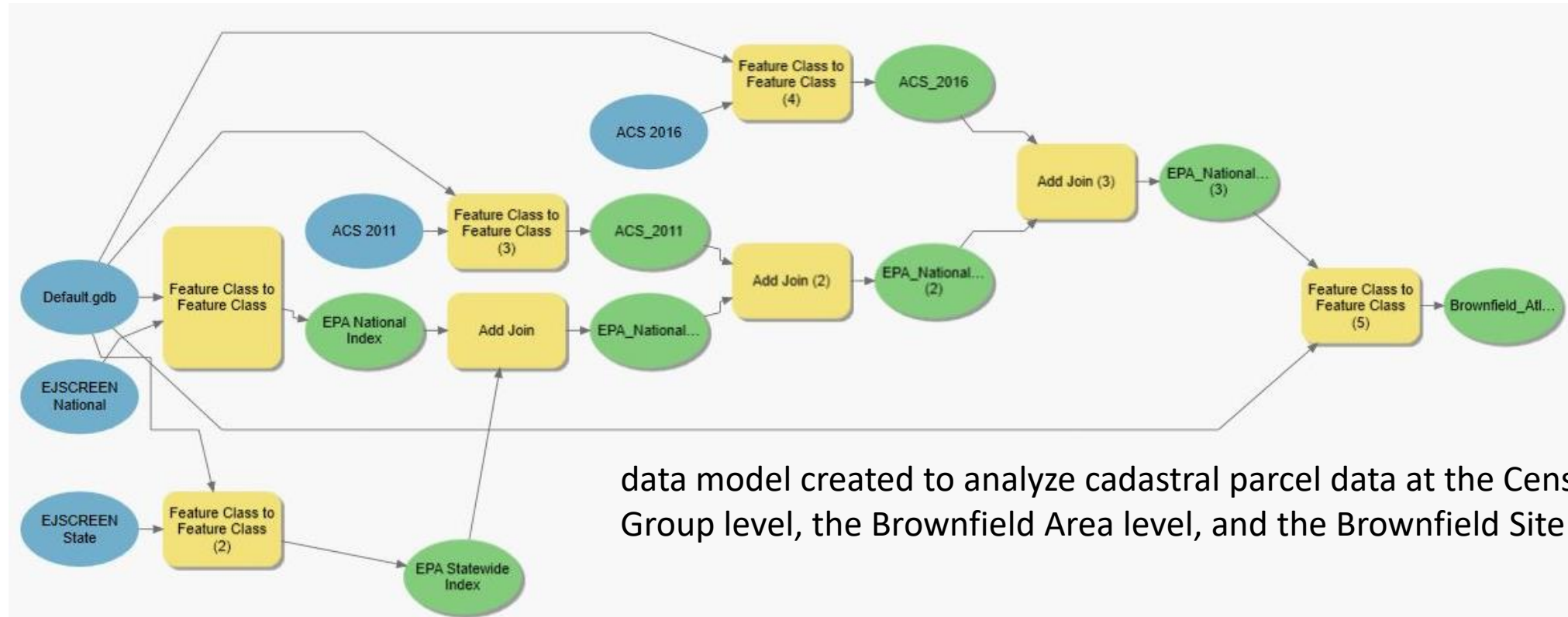
[TC] Integrated Compliance Information System-Air (ICIS-Air)

[TC] Integrated Compliance Information System - Air Major (ICIS-Air Major)

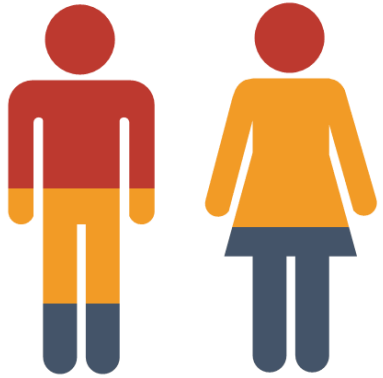
[TC] Toxic Release Inventory (TRI)

Data for the **Florida Brownfields Redevelopment Atlas** originate from numerous sources:

- National Historical Geographic Information System
- 2012/2018 ACS 5-Year summary datasets for the state of Florida at the census block group level
- Statewide parcel data, digital elevation models (where available), historic aerial imagery, and aerial LiDAR (where available)
- Florida Brownfield area and site layers managed by the FDEP
- EJScreen data on environmental health risks from the U.S. EPA



Social / Economic / Environmental Data



Demographics: population, number of households, median age, percent under age 5, percent over age 64, percent less than high school education, percent minority, employment growth, crime rates

Economics: median household income, percent households below poverty level, households with public assistance, percent households with public assistance income, total businesses, total employees, sales data

Housing: total housing units, vacant housing units, percent of units vacant, percent of units owned, percent of units rented, percent housing build prior to 1960, mean/median property values

Environmental Health: PM2.5, ozone, NATA diesel PM, NATA cancer risk, NATA respiratory HI, traffic proximity, lead paint indicator, superfund proximity, RMP proximity, hazardous waste proximity, wastewater discharge

Ground-truthing the Atlas

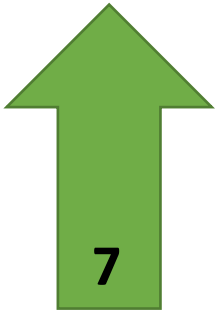


USF Site Number, FDEP Site Number
Site Name, Site Address

1. Can you locate the site?
2. Is there any indication that clean-up is still ongoing?
3. Is there new development observed in the vicinity of the site (NOT ON-SITE)?
3b. Briefly describe if YES.
4. Type of uses observed on the site.
4b. Types of uses observed in the area surrounding the site.
5. Are there streetlights present in the area?
6. Are there bus stops present in the area?
7. Are there sidewalks and crosswalks present in the area?
7b. Briefly describe their condition
8. Are there boarded up or closed buildings in the area?
8b. Briefly Describe if YES
9. Did you observe any incidents or evidence of crime?
9b. Briefly describe if YES
10. How might levels of physical activity be impacted by walking and cycling routes to and within the site, and to nearby destinations?
11. Are sensitive use sites such as schools, daycare centers, senior centers, residences, and hospitals near high volume roads or stationary pollution sources?
11b. Briefly describe if YES.
12. Are there people present and using services on the site?
13. Describe the vegetation on the site.
13b. If there are any physical conditions that would prevent planting of vegetation, please describe them below and include photos where possible
14. In no more than three sentences, describe your impression of the site and its surrounding area as well as any observations made that were not encompassed by this questionnaire.

Miracle Strip Pkwy. Fort Walton Beach

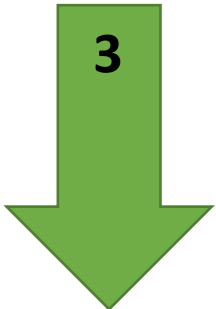
Atlas



ROI



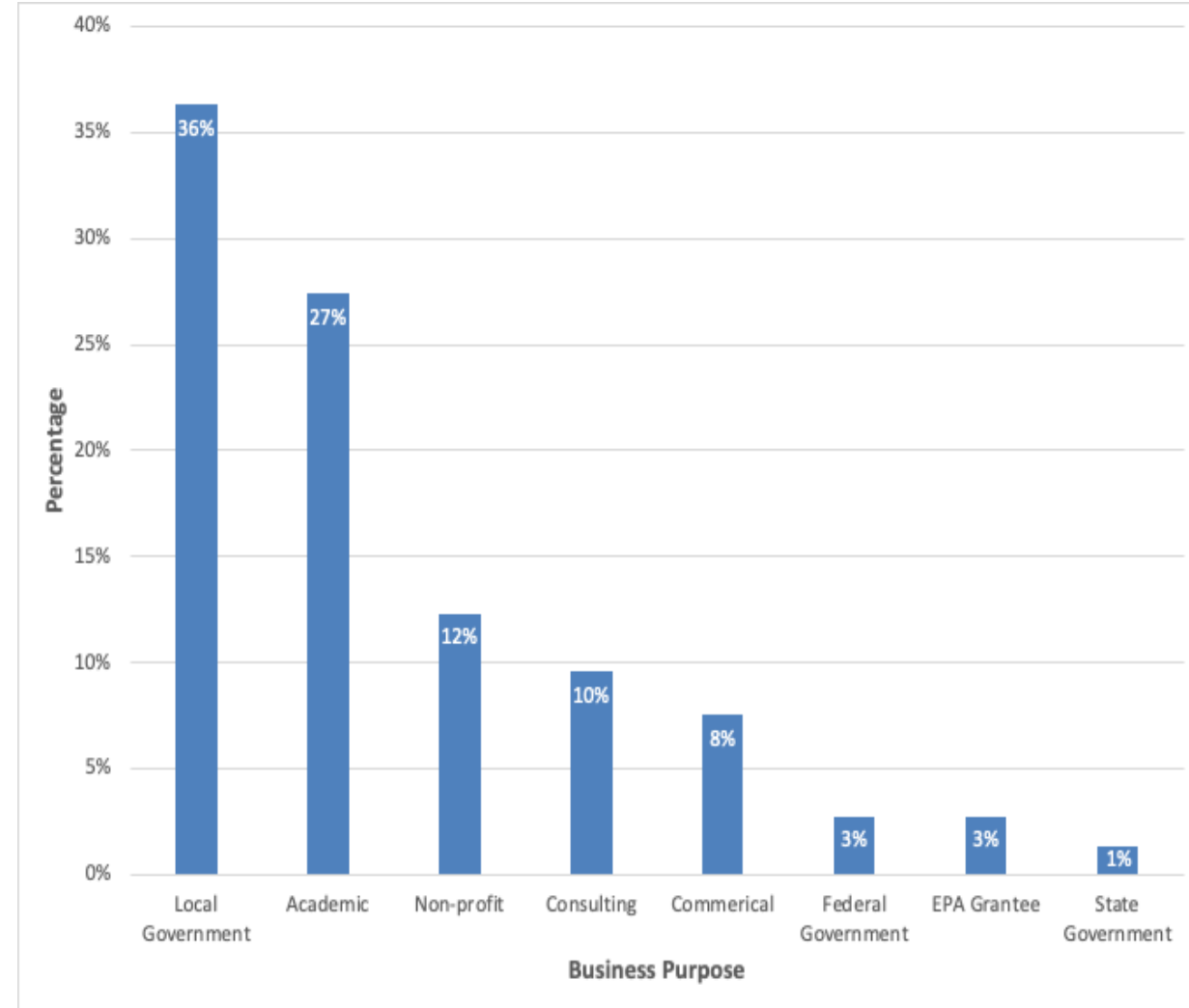
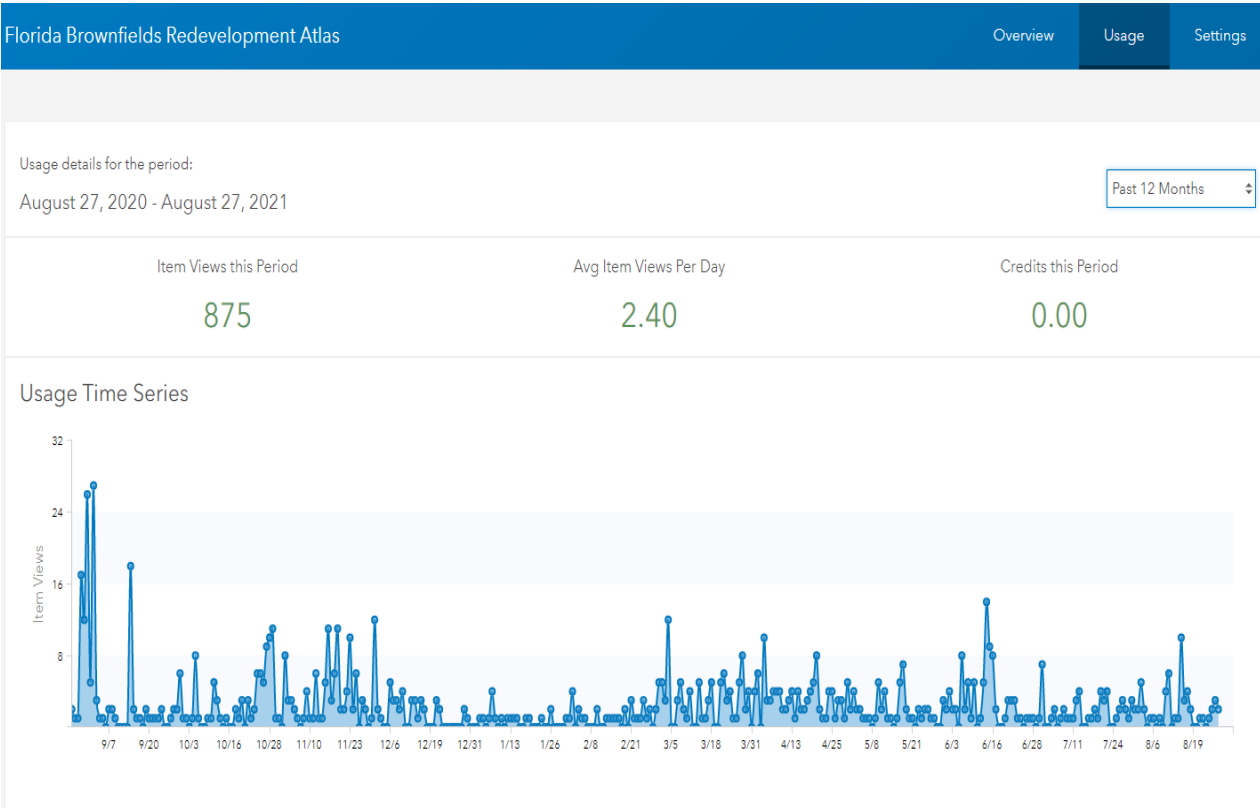
Site Visit



ROI



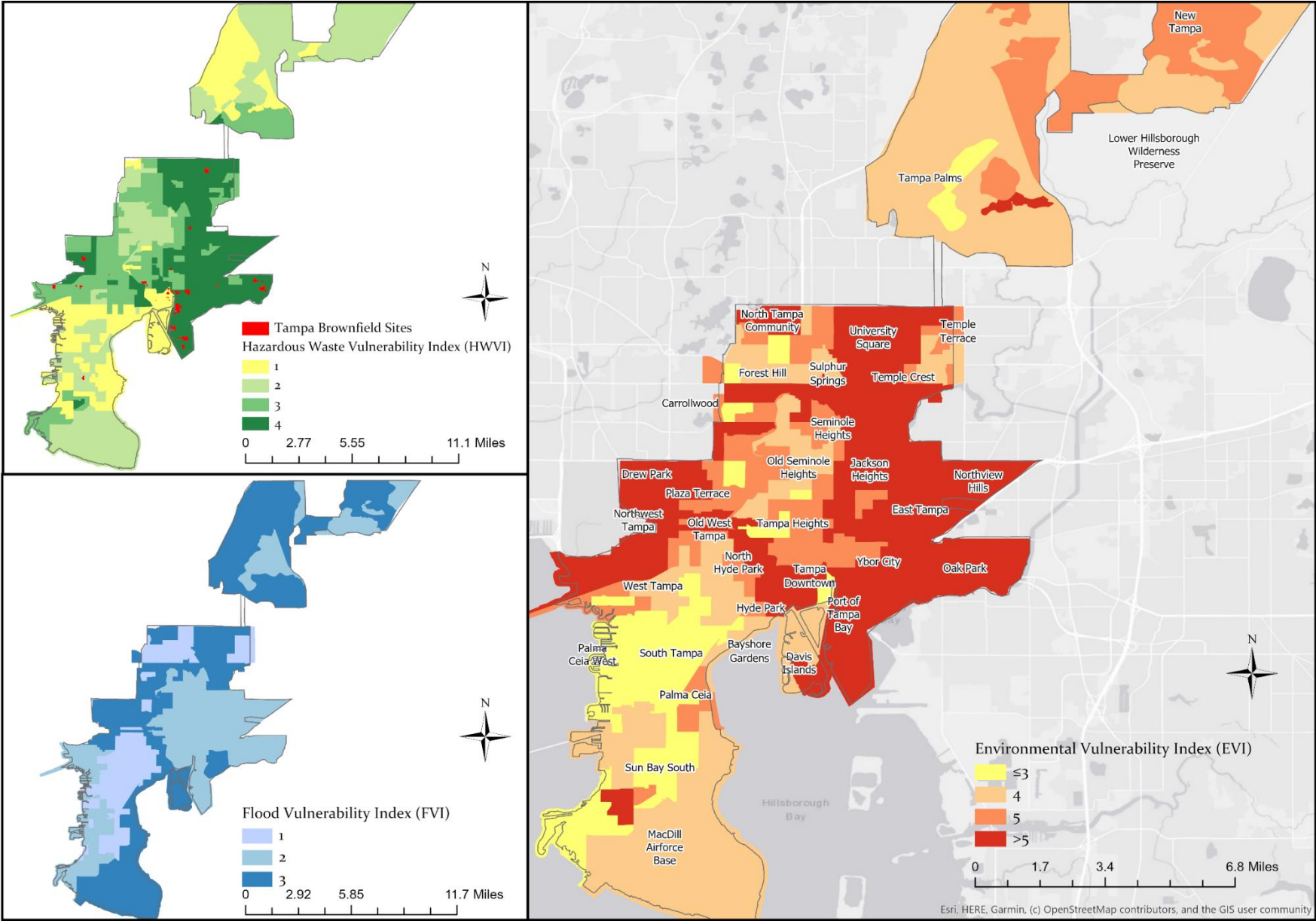
Florida Brownfields Redevelopment Atlas Usage Analytics



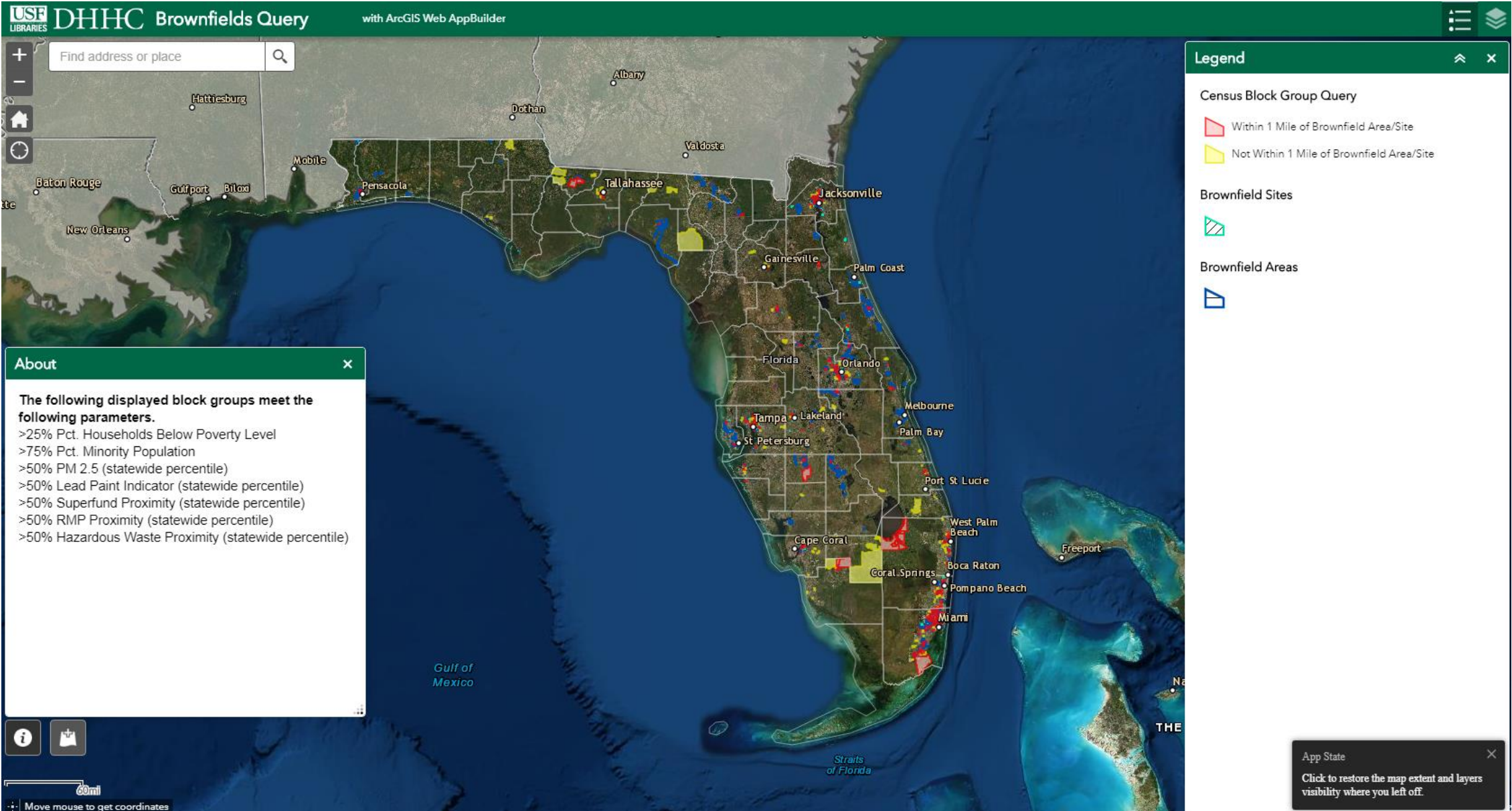
Example: U.S. EPA MARC (Multipurpose, Assessment, RLF, & Cleanup) Grants

	Points	% Total
Section 1	45-50 points	ca.30%
1 a. Target Area & Brownfields	(15)	
1.a.i. Background & Description of Target Area	5	
1.a.ii. Description of Priority Brownfield Sites	10	
1.b. Revitalization of the Target Area	(15)	
1.b.i. Reuse Strategy & Alignment with Plans	10	
1.b.ii Outcomes & Benefits of Reuse Strategy	5	
1.c. Strategy for Leveraging Resources	(15)	
1.c.i. Resources needed for Site Reuse	10	
1.c.ii. Use of Existing Infrastructure	5	
Section 2	20-35 points	ca. 20%
2.a. Community Need	(20)	
2.a.ii Community Need for Funding	5	
2.a.ii Threats to Sensitive Populations	15	
2.b. Community Engagement	(15)	
2.b.i. Project Involvement	5	
2.b.ii. Project Roles	5	
2.b.iii. Incorporating Community Involvement	5	
Section 3 (Tasks/Activities & Outputs, Cost Estimates)	50-75 points	ca.30%
Section 4 (Programmatic Capability and Past Performance)	30-35 points	ca. 20%

Example: Vulnerability Assessment for City of Tampa



Example: Mapping Environmental Injustice in Florida



THANK YOU!!!

Christian Wells

ecwells@usf.edu

usf.edu/brownfields

www.floridabrownfields.com

Project Advisors

Miles Ballogg, Cardno now Stantec

Frank Hearne, Mechanik Nuccio Hearne & Wester, P.A.

Jeff Burton, Palmetto CRA & FRA President

Kelly Crain, FDEP

Megan Johnson, FDEP

Barbara Alfano, U.S. EPA Region 4