



April 25, 2022

Citizen Engagement: A Guide to a Successful Superfund Response

**Carter Carburetor Superfund Site
St. Louis, Missouri**



MOVE YOUR ENVIRONMENT FORWARD

ENVIRONMENTAL | ENGINEERING | COMPLIANCE



Citizen Engagement: A Guide to a Successful Superfund Response

Brownfields and Environmental Justice



- Brownfields are Legacy Sites of historic industrial activities
- Many Brownfield Sites are located in disadvantaged, minority communities
- As recognition of this, Environmental Justice issues have become increasingly important

Environmental Justice



- [Executive Order](#) Executive Order 12898 (2/11/1994) by [President Clinton](#) directed federal agencies to develop environmental justice strategies to help federal agencies address disproportionately high and adverse human health or environmental effects of their programs on minority and low-income populations.

USEPA - Environmental Justice



- The concept of environmental justice is not foreign to planners. Until recently, the challenge has been:
 - Framing how to implement it during the planning process;
 - Visualizing the product from that process; and
 - Correcting the misperception that addressing environmental justice may slow down the planning process.

Carter Carburetor Superfund Site



2010 Oblique View of Carter Carburetor Site

Carter Carburetor Superfund Site



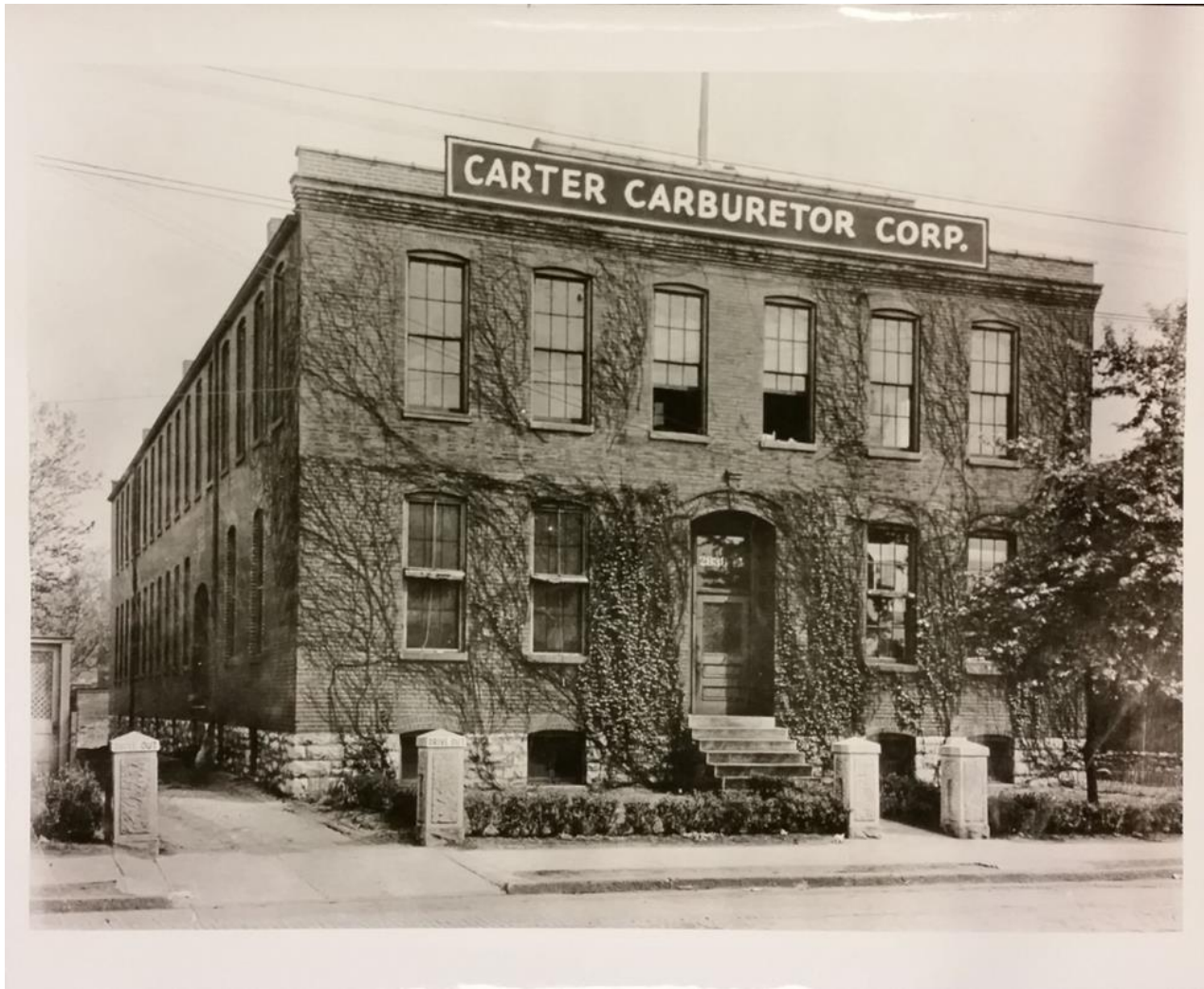
2007 Aerial View of Carter Carburetor Site

Carter Carburetor Superfund Site

- **History of the Carter Carburetor Site**

- Industrial activity at the Site manufacturing carburetors from 1920s to 1985
- Prior to 1978, Pydraul[®], a PCB containing hydraulic fluid, was used in the manufacturing process
- Primary impacts to Site are Polychlorinated Biphenyls (PCBs) and Trichloroethene (TCE)
- USEPA/Private Party entered into Settlement Orders in 2005 & 2013 –
PRIVATELY FUNDED SUPERFUND SITE
- Purpose
 - Conducting investigation to support and complete Engineering Evaluation/Cost Analysis (EE/CA) & Removal Action (RA)

Carter Carburetor Superfund Site



Original Carter Carburetor Building, corner of North Spring Avenue and Dodier Street

Carter Carburetor Superfund Site



Aerial view of
Carter
Carburetor Site
looking south -
late 1950s/early
1960s

Carter Carburetor Superfund Site



Aerial view of
Carter
Carburetor Site
looking east - late
1950s/early
1960s



CBI Building – Sunrise July 3, 2014



CBI Building –
Prepared for
Exterior
ACM/Pb
Abatement



Removal Action: Est. \$35MM

**CBI Buildings CA
#1**

ACM Abatement &
Pb Dry Ice Blast;
CBI Demolition

**WILLCO Plastics
CA #2**

ACM Abatement &
Pb Dry Ice Blast;
WILLCO
Demolition

**Former N/S Die Cast
Buildings CA #3**

Excavation and Off-
Site Disposal w/
TSCA CAP

**Former TCE AST CA
#4**

TCE AST ISTD/SVE

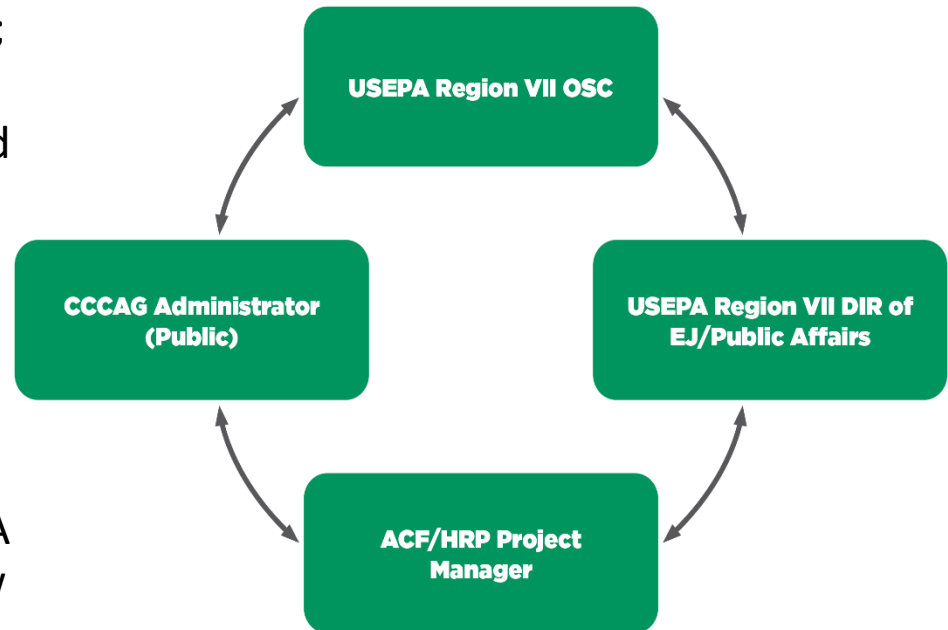


Carter Carburetor Superfund Site



- **EJ Goals @ Carter Site**

- Earn the trust of the Community;
- Provide the same degree of protection for environmental and health hazards;
- Equal access to the decision-making process to live, learn and work;
- Public Meetings held either as required, at the request of the Public, by the Stakeholder/USEPA Group or with the release of new information/data/Work Plans;



Carter Carburetor Superfund Site



- **Earning the Trust of the Community**
 - Communicate, Communicate, Communicate;
 - Be respectful, act in a manner that demonstrates the Community is an Equal Player in the Remediation with the PRP and Regulatory Agency;
 - You can have the best remedy.....but if the Community doesn't support it, it isn't worth much;
 - Simultaneous distribution of documents, reports, data to the Community when transmitting to Regulatory Agencies;
 - NO SURPRISES

Carter Carburetor Superfund Site



- Provide the same degree of protection for environmental and health hazards

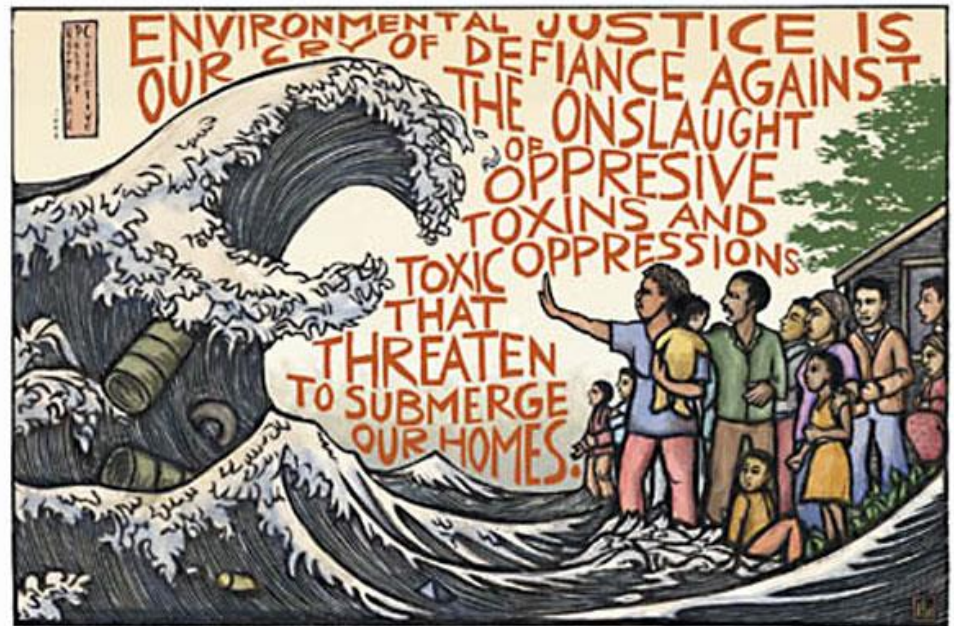


Illustration by: [Ricardo Levins Morales](#)

Carter Carburetor Superfund Site



- Equal access to the decision-making process to live, learn and work;
 - Solicited recommendations from community leaders and elected officials for an involved, committed local consultant;
 - Hired a local minority Environmental Justice consultant;
 - Assisted in developing communication, involvement strategies and engagement with the community;
 - Provided independent oversight and evaluation, trusted by the community;
 - Hired local, minority businesses to support Site activities;
 - Supported the local businesses/community

Carter Carburetor Superfund Site



- Public Meetings held as required, at the request of the Public, by the Stakeholder/USEPA Group or with the release of new information/data/Work Plans;
 - During the EE/CA Process:
 - ACF and its representatives met regularly with USEPA including, EPA Regional Director of Environmental Justice/Public Affairs.
 - Also met with representatives of the Stakeholder Group and the Public, initially quarterly, but less frequently as the Project progressed.

Carter Carburetor Superfund Site



- Other Key Factors:
 - HRP Project Team forged a strong, working relationship with the staff and management of the adjoining Boys and Girls Club of Greater St. Louis facility, which is the largest community-based organization in North St. Louis;
 - Worked closely with State and Local officials;
 - Sponsored and staffed a Job Exposition for using local vendors, hiring people from the surrounding community;
 - Partnered with local Community College for securing grants and hiring graduates from their Environmental Remediation Technician program;
 - HRP was also very successful in providing a diverse staff at the Carter Site by hiring/staffing/contracting MBE/DBE/WBEs. MBE participation at the Carter Carburetor Superfund Site exceeded 50% for labor, boots on the ground workforce for the entire duration of the Project in the field starting in April 2014.

CONCLUSIONS



- WHY WAS IT A SUCCESS???
 - Communication;
 - Working closely with Local, State, Federal and Regulatory Officials;
 - Strong, working relationships with Community Leaders;
 - Recruiting, hiring and mentoring a diverse staff at the Carter Site;
 - ACF/USEPA met Quarterly with representatives of the Stakeholder Group and Public;
 - Engaged local minority Environmental Justice consultant;
 - Simultaneous distribution of documents, reports, data to the Community when transmitting to Regulatory Agencies; and
 - NO SURPRISES.

WHAT'S NEXT?????





THANK YOU.

Eugene M. Watson
Principal, Regional Manager
HRP Associates, Inc.
2500 South Old Highway 94, Suite 202
Saint Charles, Missouri 63303
314.200.4727
gene.watson@hrpassociates.com