

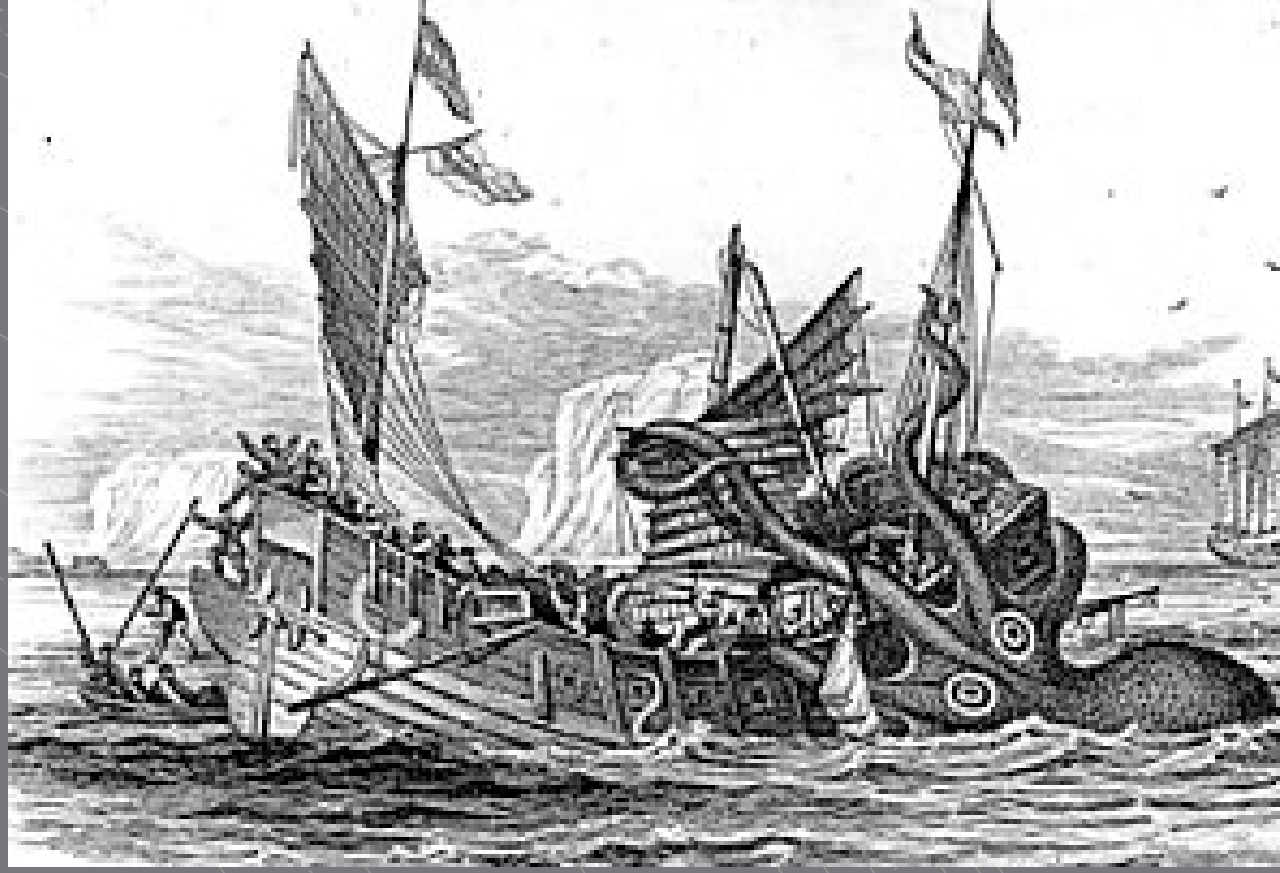


PENSACOLA, FL

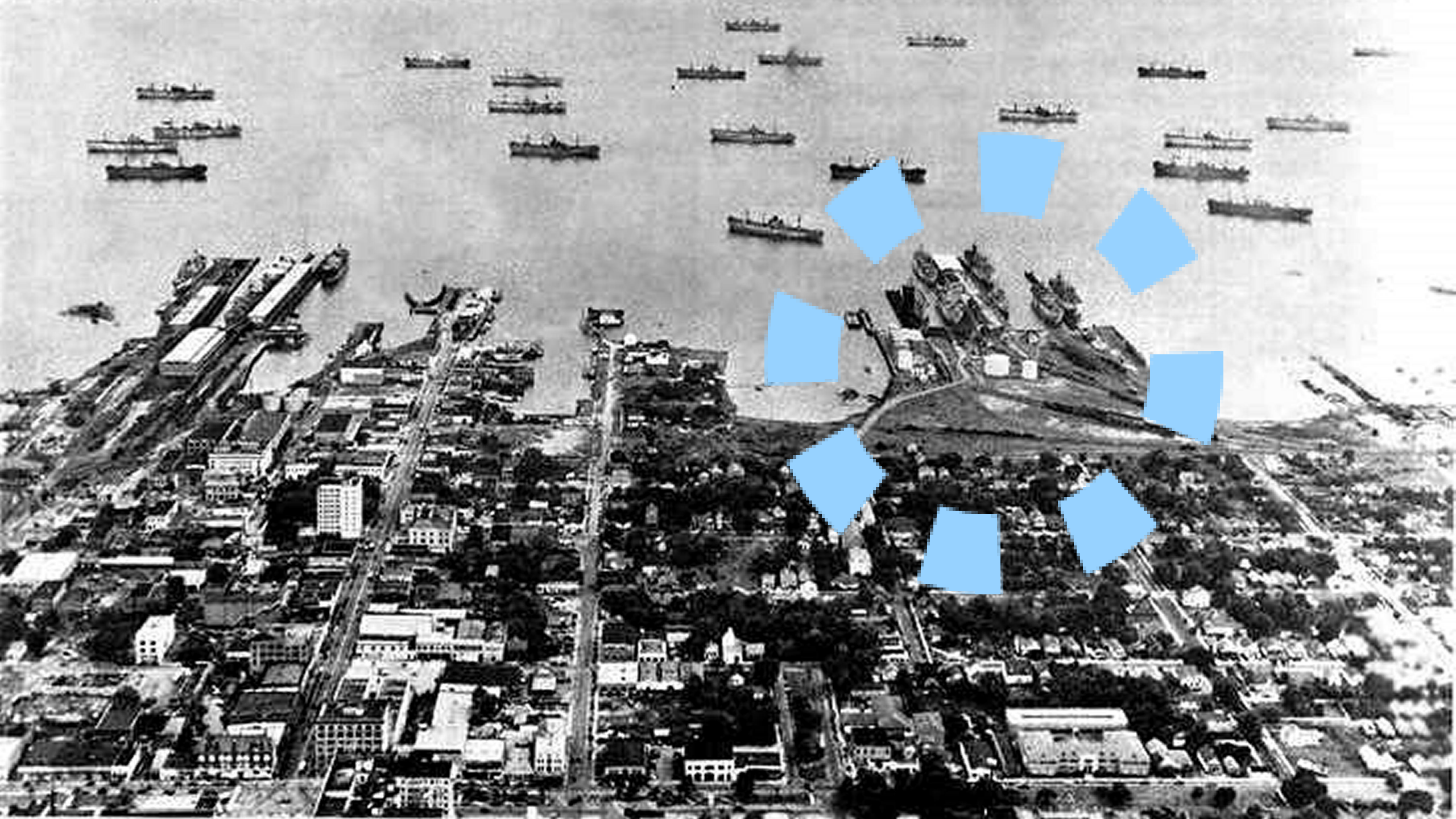
Pilings, Divers and Things Swimming in the Deep
Community Maritime Park's Submerged Redevelopment



CONNECT PEOPLE TO THE WATERFRONT







An aerial photograph of the Frisco Piers in 1955, showing several large, rectangular piers extending into a body of water. The piers are arranged in a semi-circular pattern. A blue circular graphic, composed of ten blue trapezoidal segments, is overlaid on the right side of the image, partially obscuring the piers. The background shows a mix of land with some buildings and vegetation.

Frisco Piers 1955 Aerial View



SITE: MARITIME PARK MA.
SOURCE: USGS
DATE: 10/22/1955
COUNTY: ESCAMBIA
SCALE: 1" = 500'



1955 to 1974

Project
Site





Community Maritime Park



Redevelopment

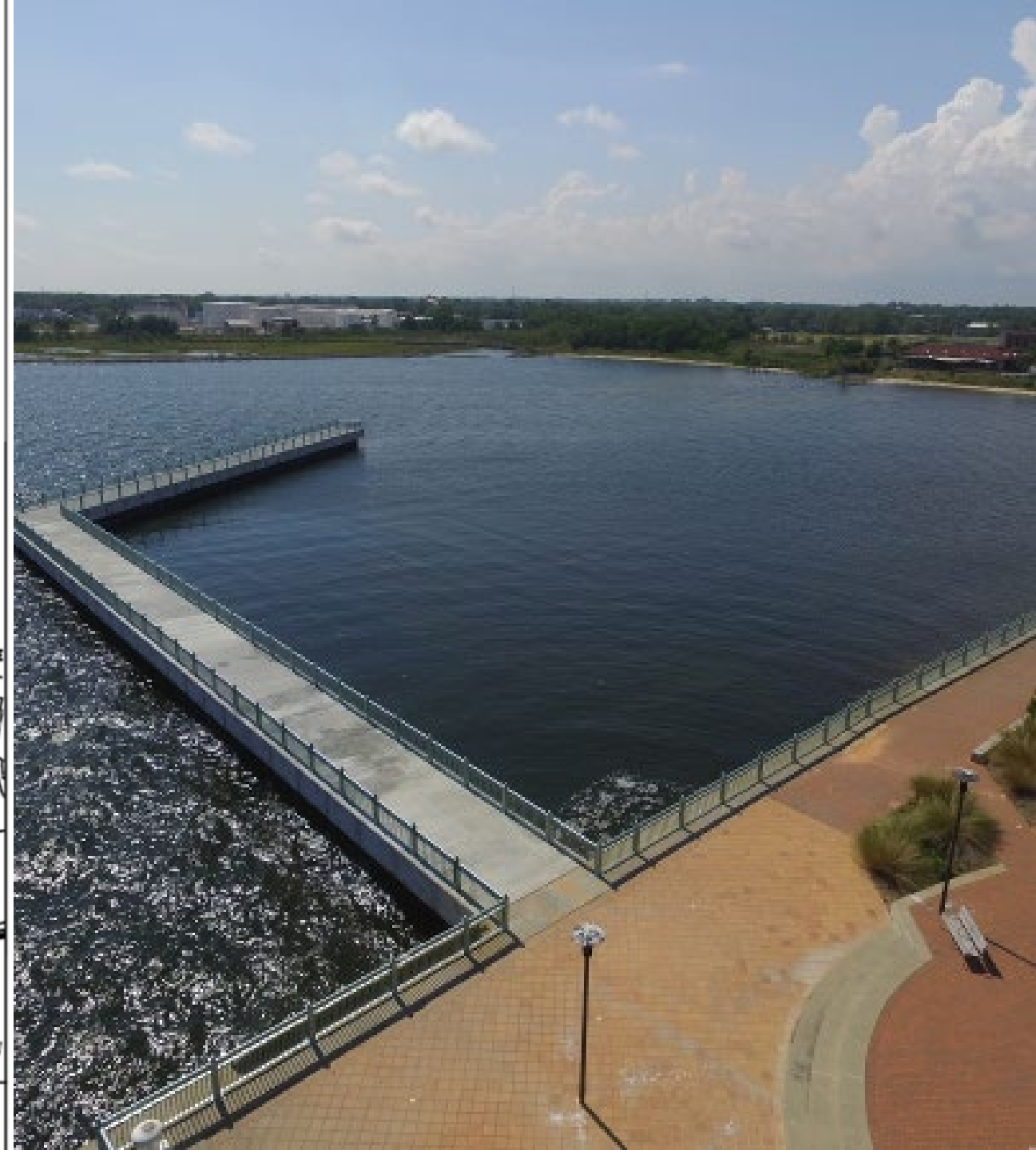
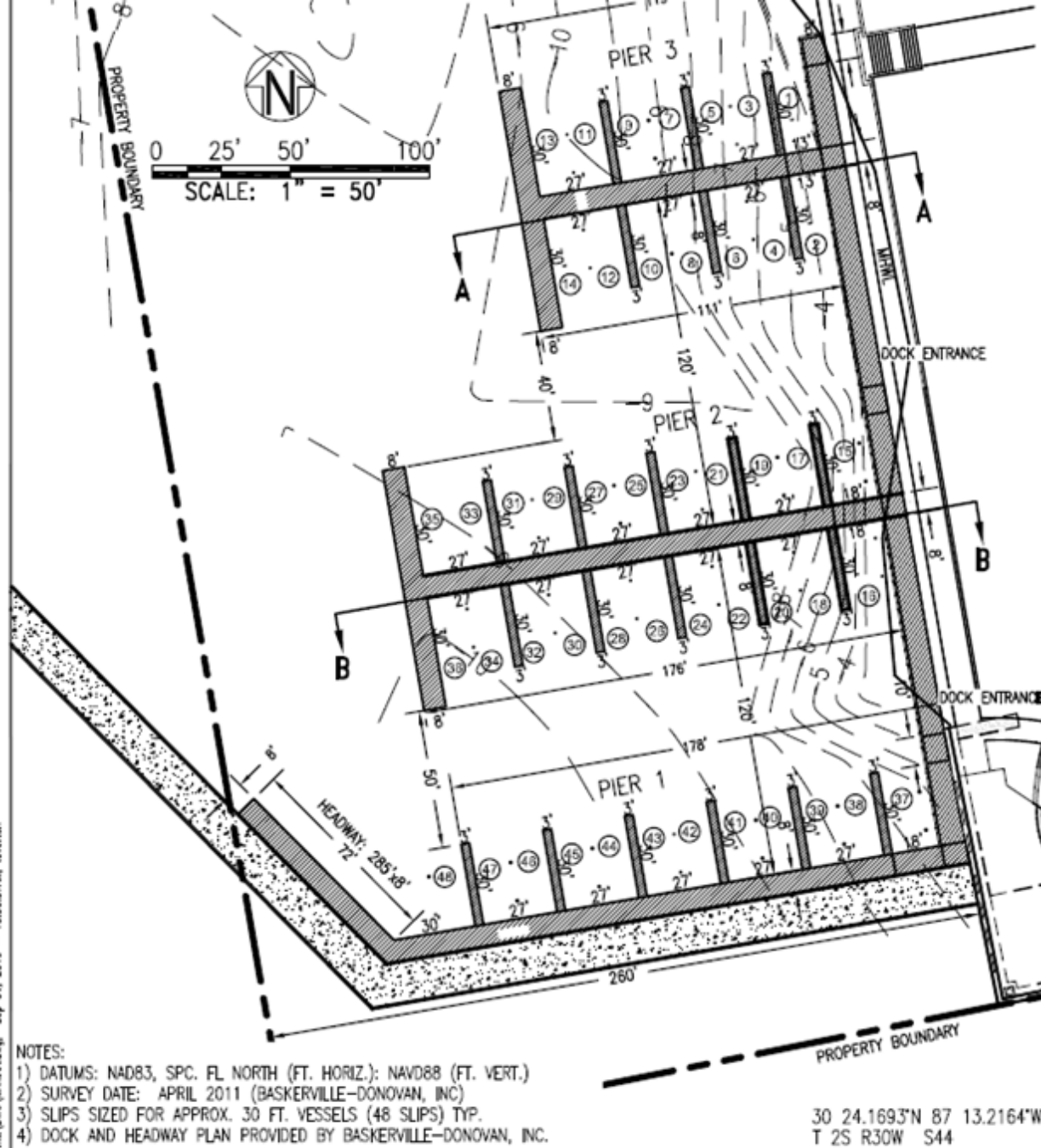


A North View of Pensacola, on the Island of Santa Rosa, Drawn by DOM. SERRE S.
1. The Fort, 2. The Church, 3. The Governors House, 4. The Commandants House, 5. A Well, 6. A Bunge.

Community Maritime Park

Submerged Land
Redevelopment
in Pensacola Bay







Planning Projects: SCAPE



**CREATE A MORE CONNECTED
PUBLIC REALM**

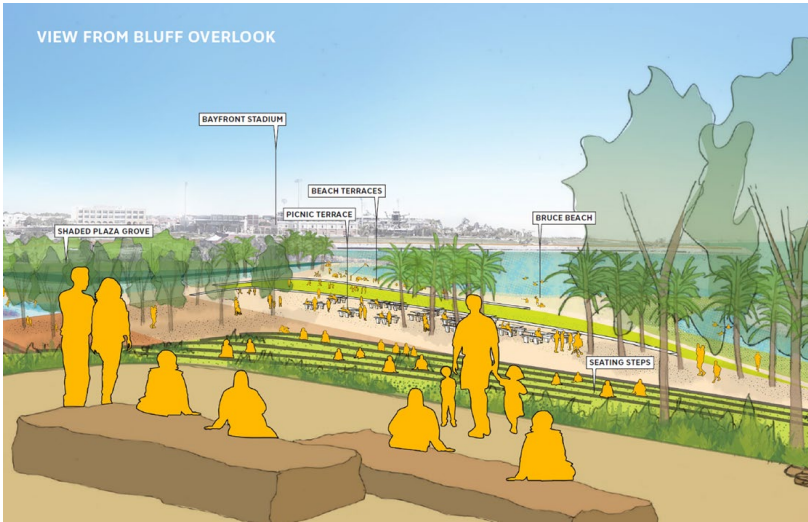


**PENSACOLA WATERFRONT FRAMEWORK
AND CATALYTIC PROJECTS**

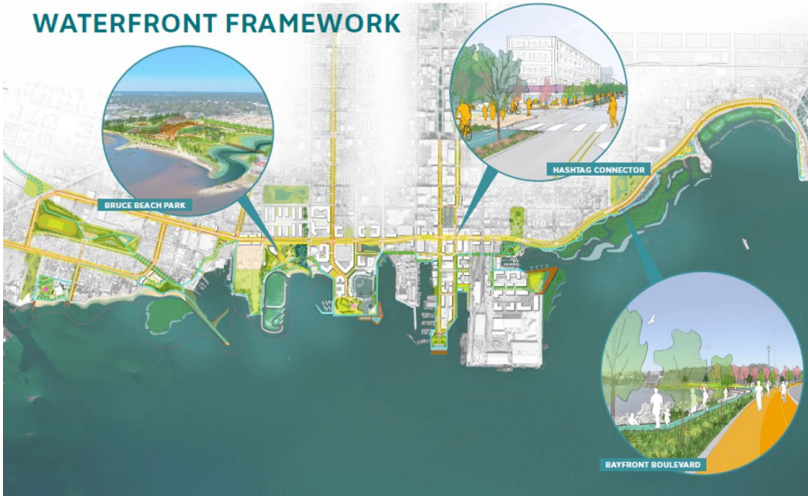
JUNE 17, 2019



**HIGHLIGHT AND CELEBRATE
LOCAL ECOLOGY**



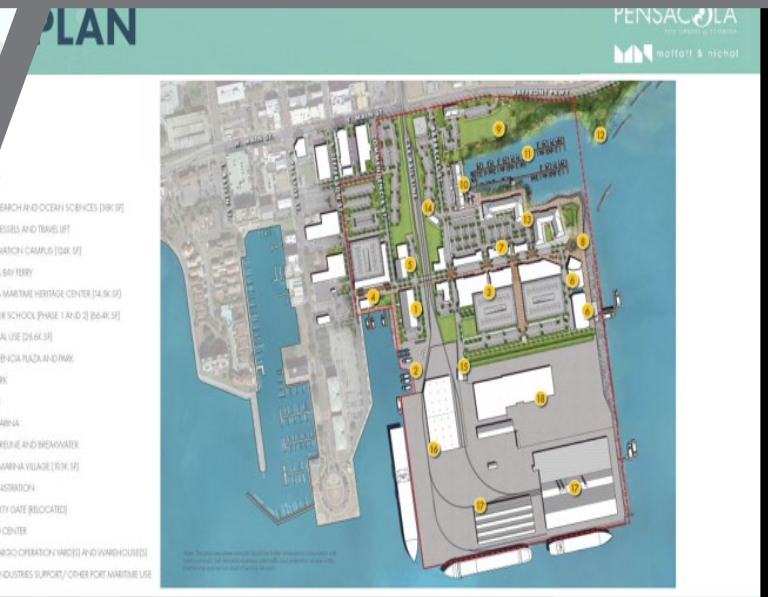
WATERFRONT FRAMEWORK



SCAPE



PORT VISION PLAN







Partnerships

Project Partners

Citizens of
Pensacola

City of Pensacola

EPA

Emerald Coast
Regional Council
and Contractors

FDEP and State
Contractors

CDFA

PPM and
Subcontractors

Escambia County

Army Corps of
Engineers

Port of Pensacola

Pate Stevedore

Harders & Son

Community
Maritime Park
Associates

Baskerville-
Donovan

Brownfield Funding Sources/ Advisors



Emerald
Coast
Regional
Council



Florida Department of
Environmental
Protection



Council of Development
Finance Agencies

Maritime Park Marina Roadmap to Redevelopment

Prepared for:
The City of Pensacola

Prepared by:
Council of Development Finance Agencies

About the Roadmap to Redevelopment

The *Roadmap to Redevelopment* is a product of the [CDFA Brownfields Technical Assistance Program](#), which is funded through a grant from the U.S. Environmental Protection Agency. The program provides technical assistance to brownfields communities on redevelopment finance. For communities that require detailed, hands-on assistance for their redevelopment efforts, CDFA Brownfields Project Response Teams comprised of CDFA staff and technical assistance partners are available to conduct site visits and provide recommendations. The goal of these visits is to offer communities specific, actionable advice that can transform brownfields into economically-productive sites in accordance with the goals and plans of the community. CDFA will coordinate 36 Brownfields Project Response Teams over the life of the program.

The *Roadmap to Redevelopment* was developed through a multi-day process that included interviews with numerous stakeholders from the government, business, and non-profit sectors. The plan provides a framework for financing the development of a public use marina on submerged lands near the shore of the Community Maritime Park.

The *Roadmap to Redevelopment's* recommendations combine the input of development finance experts, CDFA staff, and the interests of stakeholder groups gathered during the Project Response Team site visit.



Brownfields

[Brownfields Home](#)

[Overview](#)

[Accomplishments and
Benefits](#)

[Types of Grant Funding](#)

[Brownfields and Land
Revitalization Activities
Near You](#)

[Select Publications](#)

[Grantee Success Stories](#)

[Grantee Reporting using
ACRES](#)

Types of Brownfields Grant Funding

Summary of Grant Funding

EPA's Brownfields program provides direct funding for Brownfields assessment, cleanup, revolving loans, and environmental job training. To facilitate the leveraging of public resources, EPA's Brownfields Program collaborates with other EPA programs, other federal partners, and state agencies to identify and make available resources that can be used for Brownfields activities. In addition to direct Brownfields funding, EPA also provides technical information on Brownfields financing matters.

- [Assessment Grants](#) provide funding for Brownfields inventories, planning, environmental assessments, and community outreach.
- [Revolving Loan Fund Grants](#) provide funding to capitalize loans that are used to clean up brownfields.
- [Cleanup Grants](#) provide funding to carry out cleanup activities at Brownfield sites owned by the applicant.

Grants
Summary

[Assessment
Grants](#)

[Revolving Loan
Fund Grants](#)

[Cleanup
Grants](#)

[Area-Wide
Planning Grants](#)

[EWDJT
Grants](#)

[State and Tribal
Grants](#)

Emerald Coast Regional Council



Brownfields Revolving Loan Subgrant

In partnership with EPA





Site-Specific Activities / Targeted Brownfields Assessment Program

[Home](#) » [Divisions](#) » [Division of Waste Management](#) » [Waste Cleanup Program](#) » Site-Specific Activities / Targeted Brownfields Assessment Program

Waste Cleanup Program Quick Links

[Waste Cleanup Program](#)

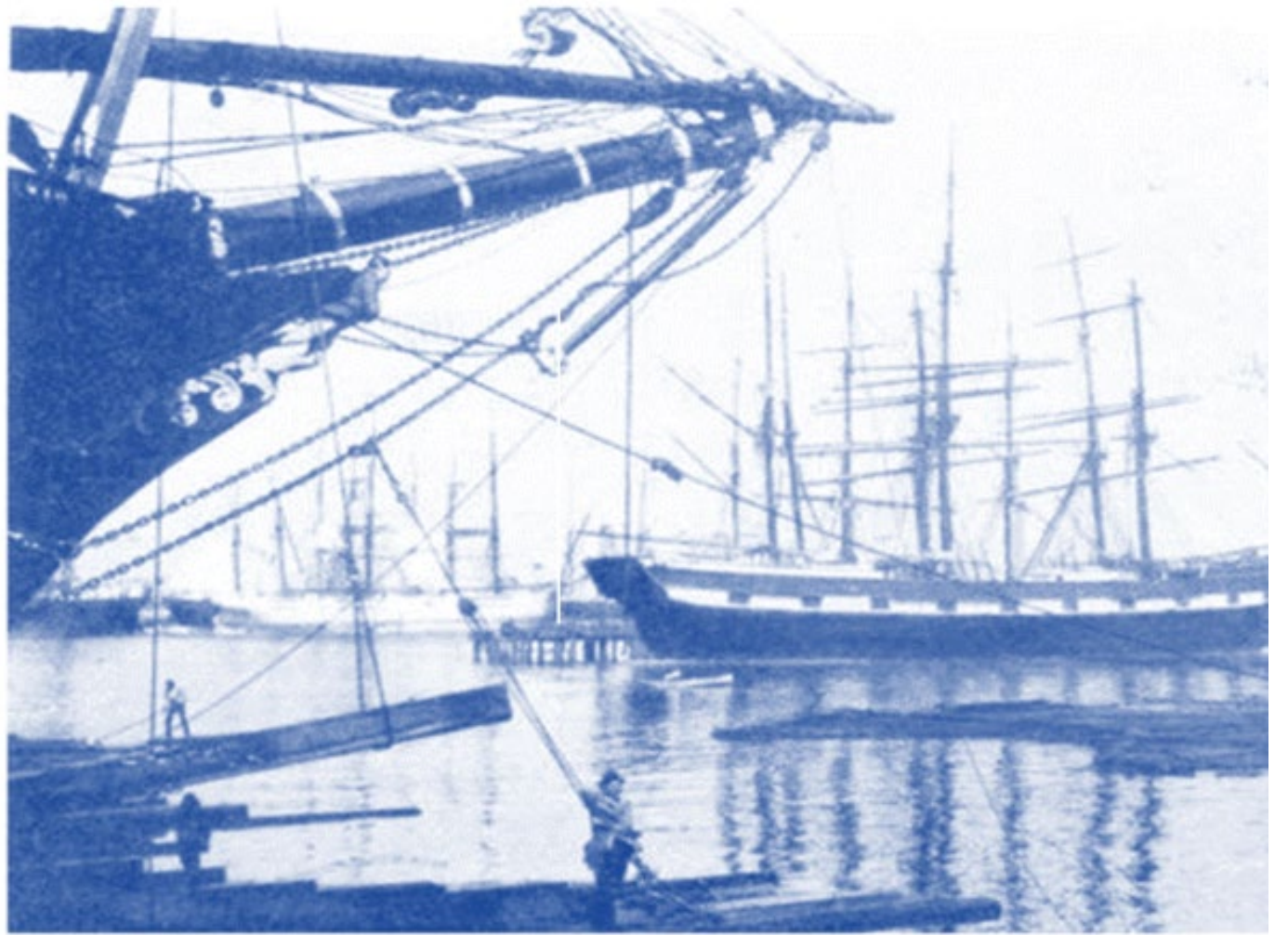
[Waste Site Cleanup Section](#)

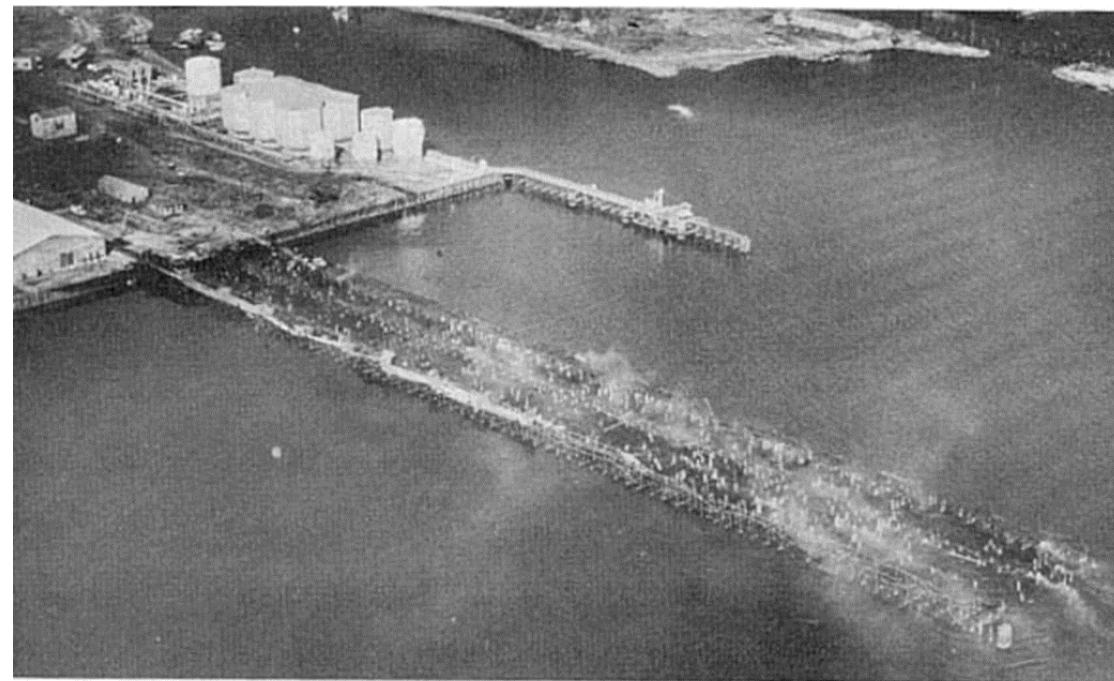
[Site Investigation](#)

Site-Specific Activities/Targeted Brownfield Assessment (TBA)

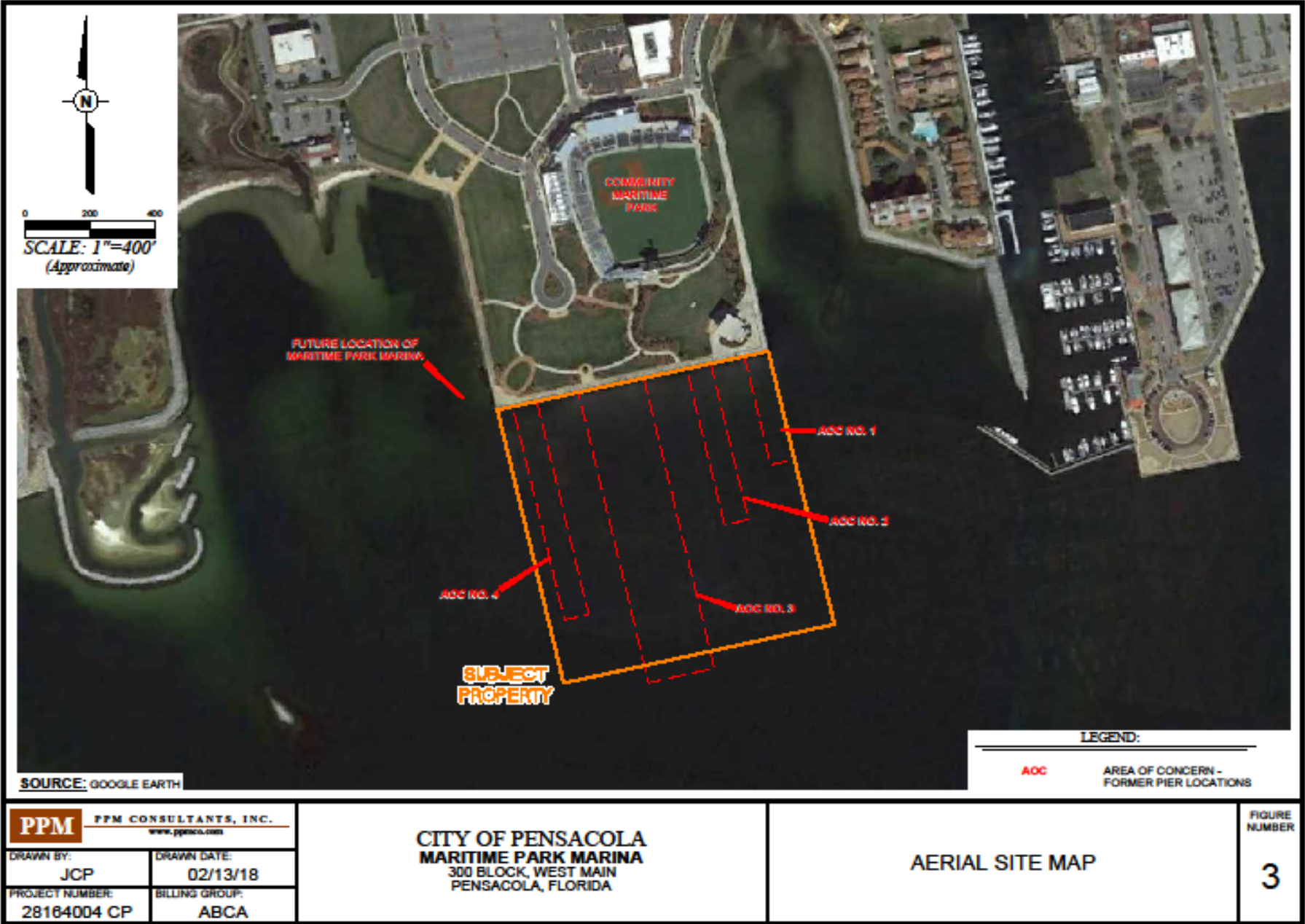
The Targeted Brownfield Assessment program and Site-Specific Activity program, which is authorized and funded by CERCLA Section 128(a) are designed to help the states and municipalities—especially those without EPA Brownfields Assessment Demonstration Pilots—minimize the uncertainties of contamination often associated with brownfields. Targeted Brownfields Assessments (TBAs) and Site-Specific Activities (SSAs) supplement and work with other efforts under EPA's Brownfields Initiative and Florida's Brownfields

Technical



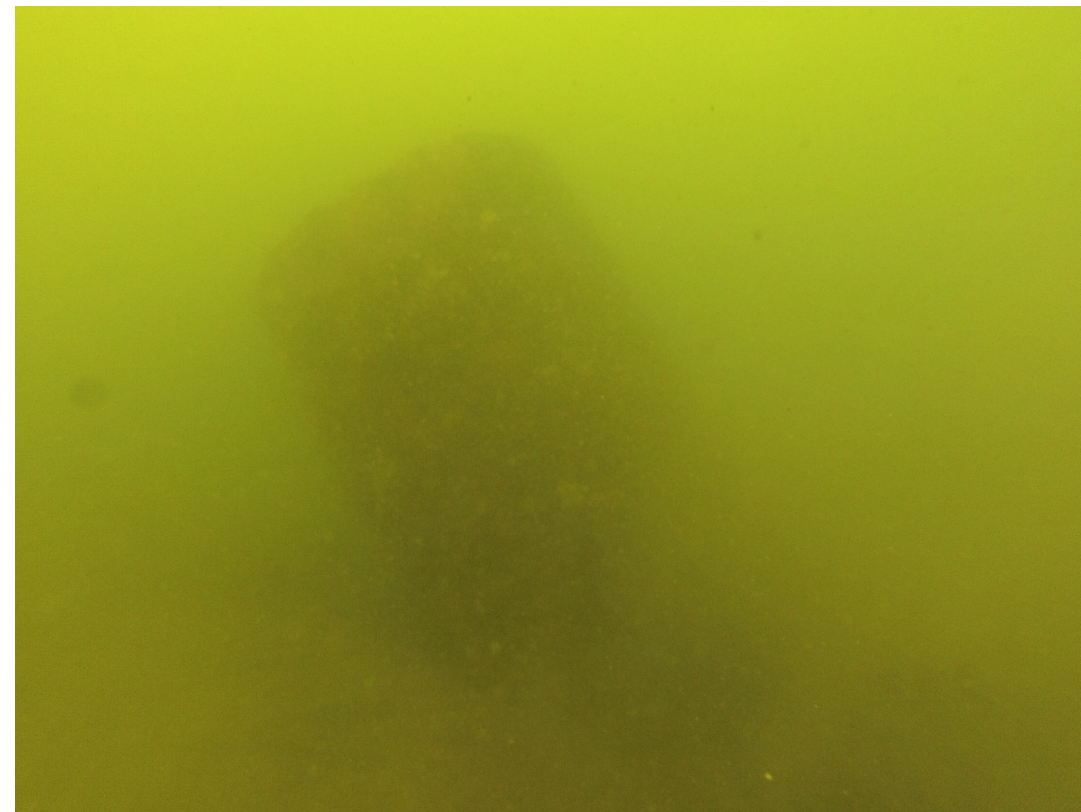
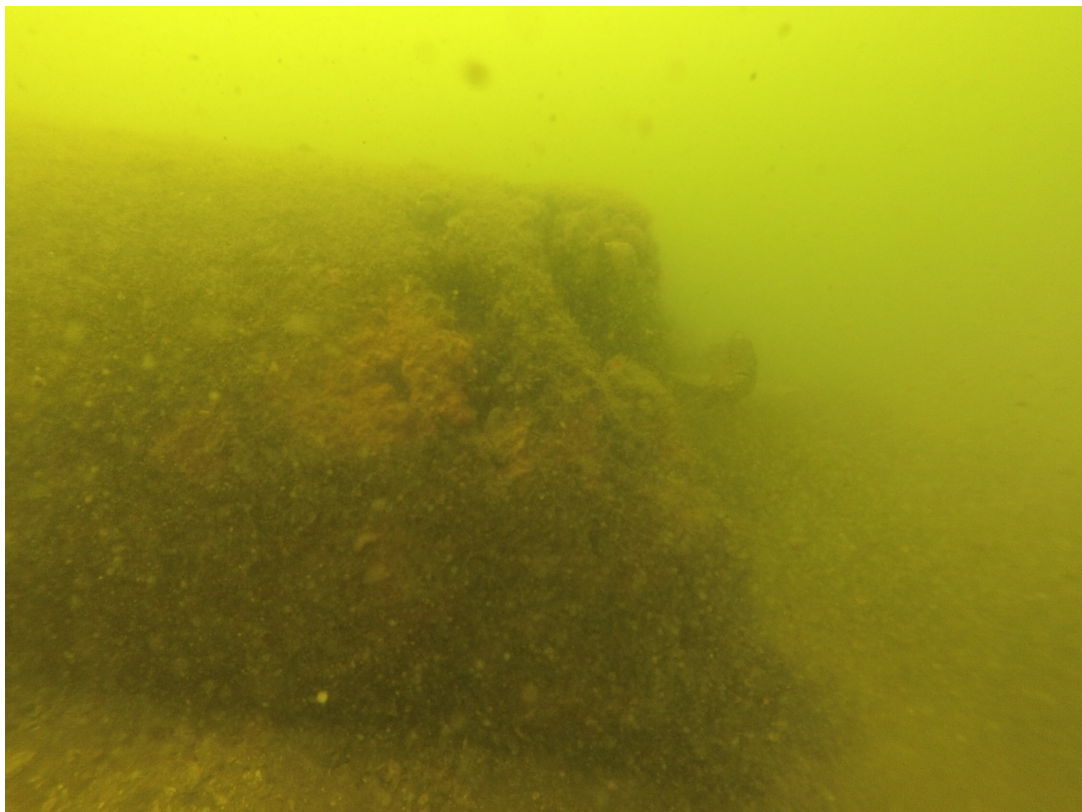


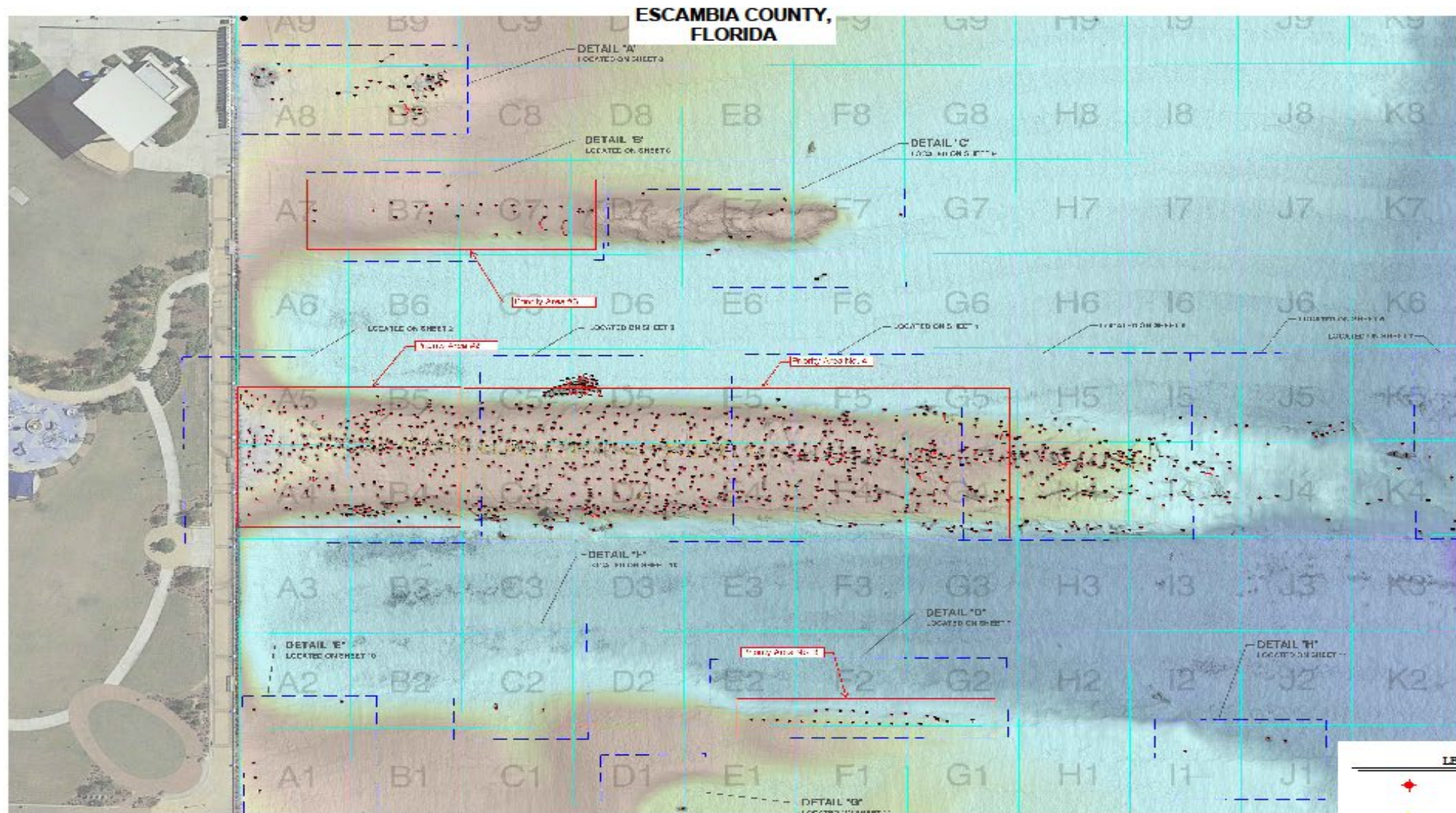
Aerial Site Map











PPM PPM CONSULTANTS, INC.
www.ppmco.com

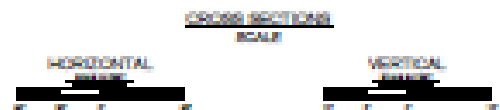
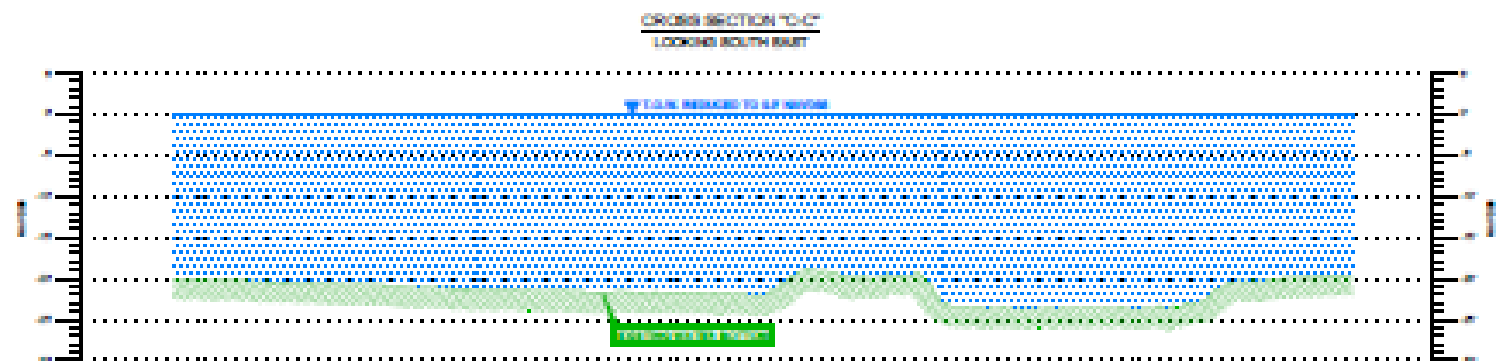
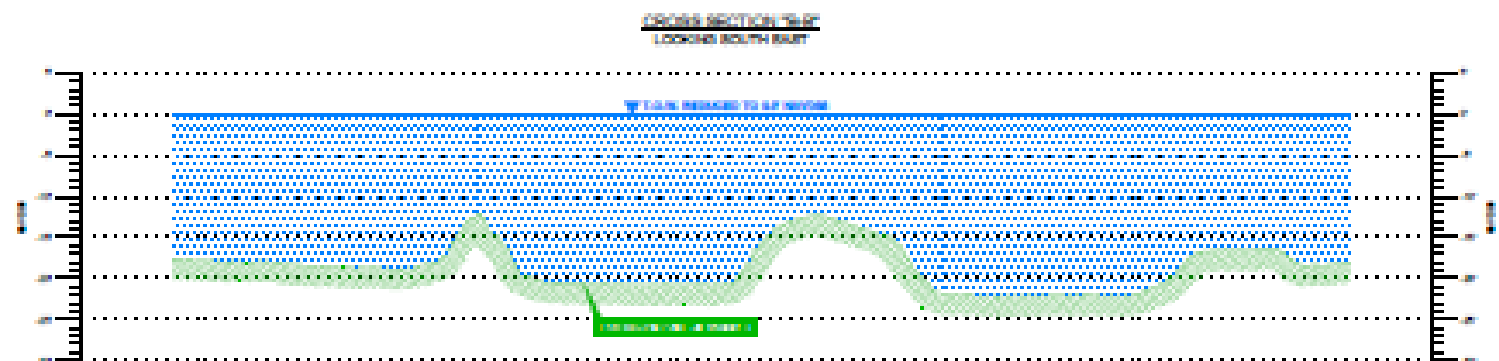
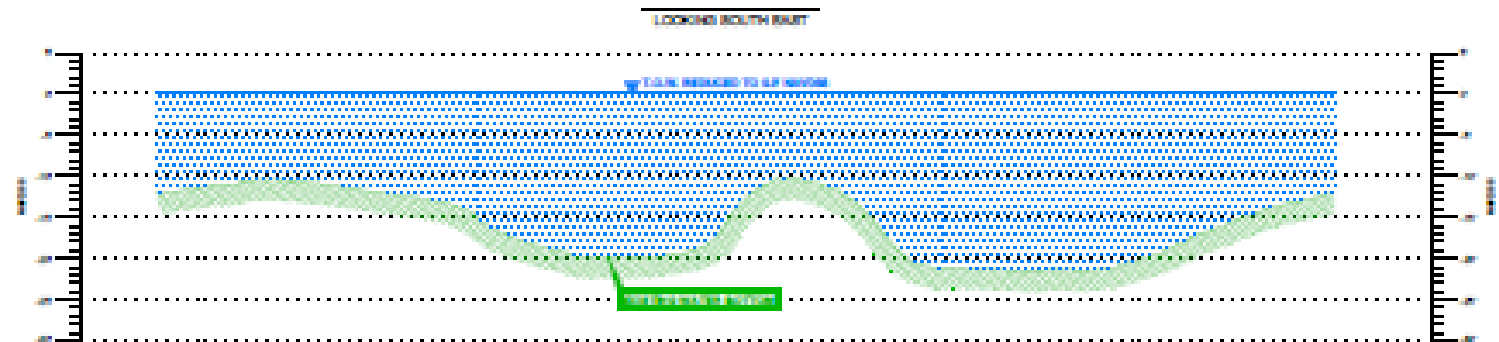
DRAWN BY: JCP	DRAWN DATE: 02/13/18
PROJECT NUMBER: 28164004 CP	BILLING GROUP: ABCA

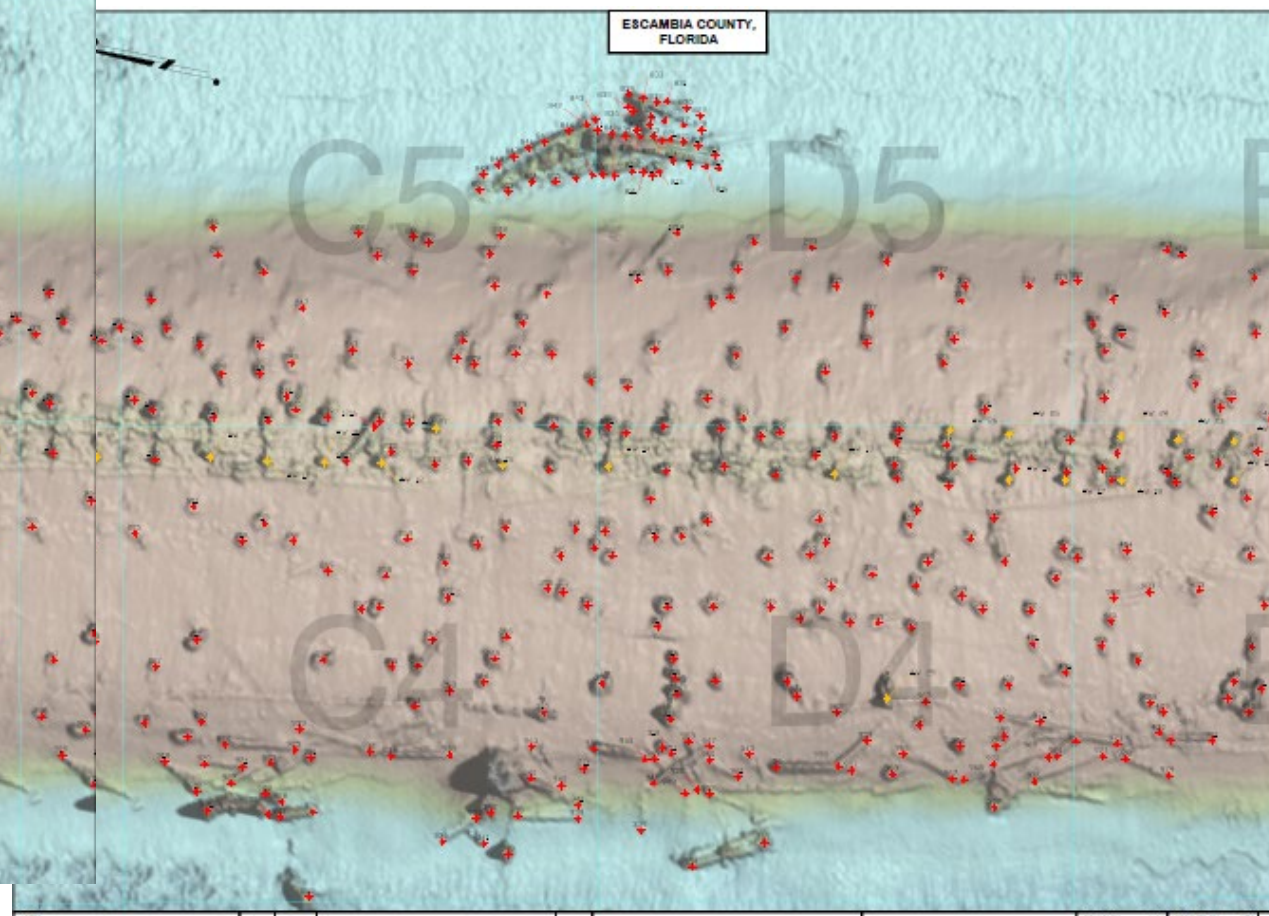
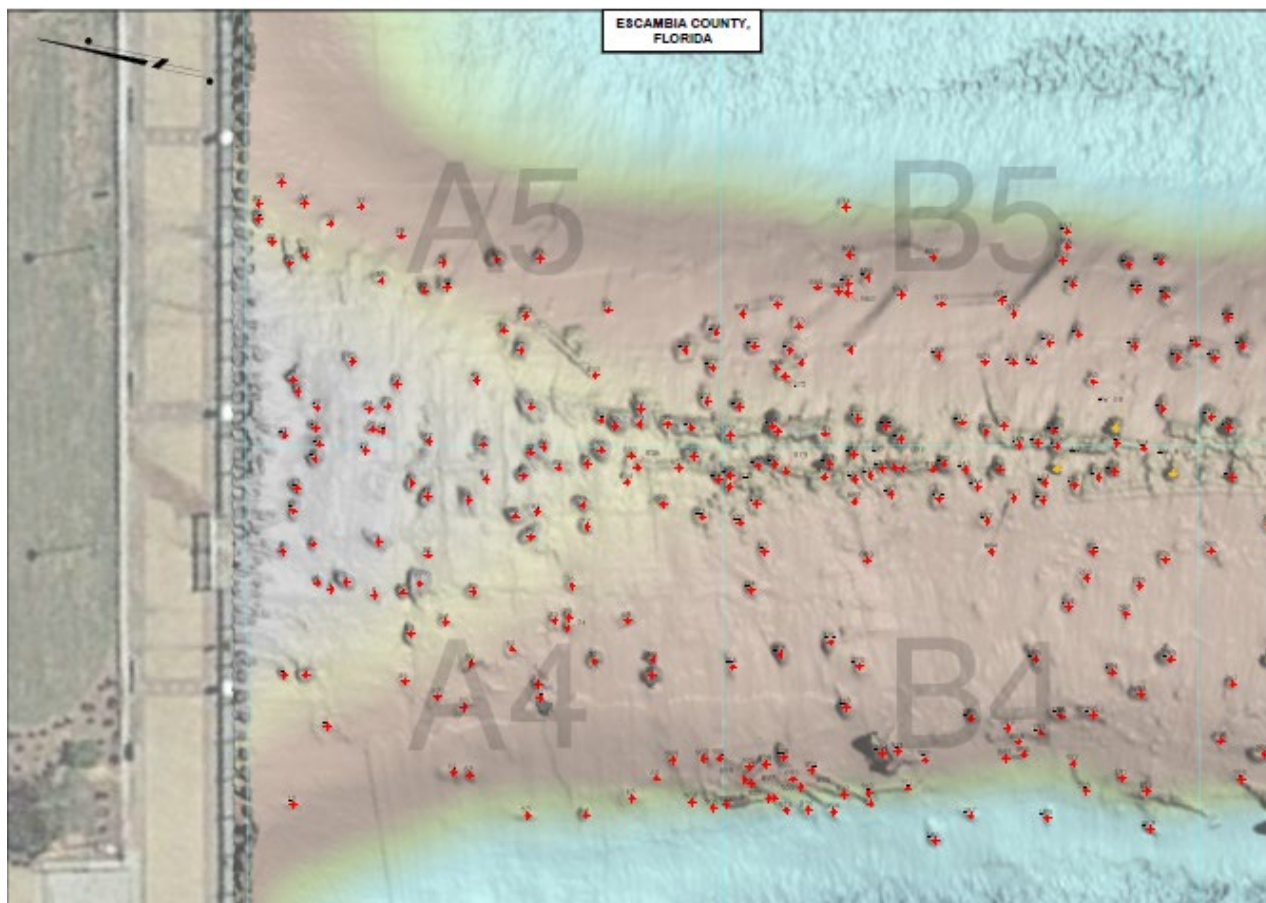
**CITY OF PENSACOLA
MARITIME PARK MARINA
300 BLOCK WEST MAIN STREET
PENSACOLA, FLORIDA**

CLEAN-UP AREA

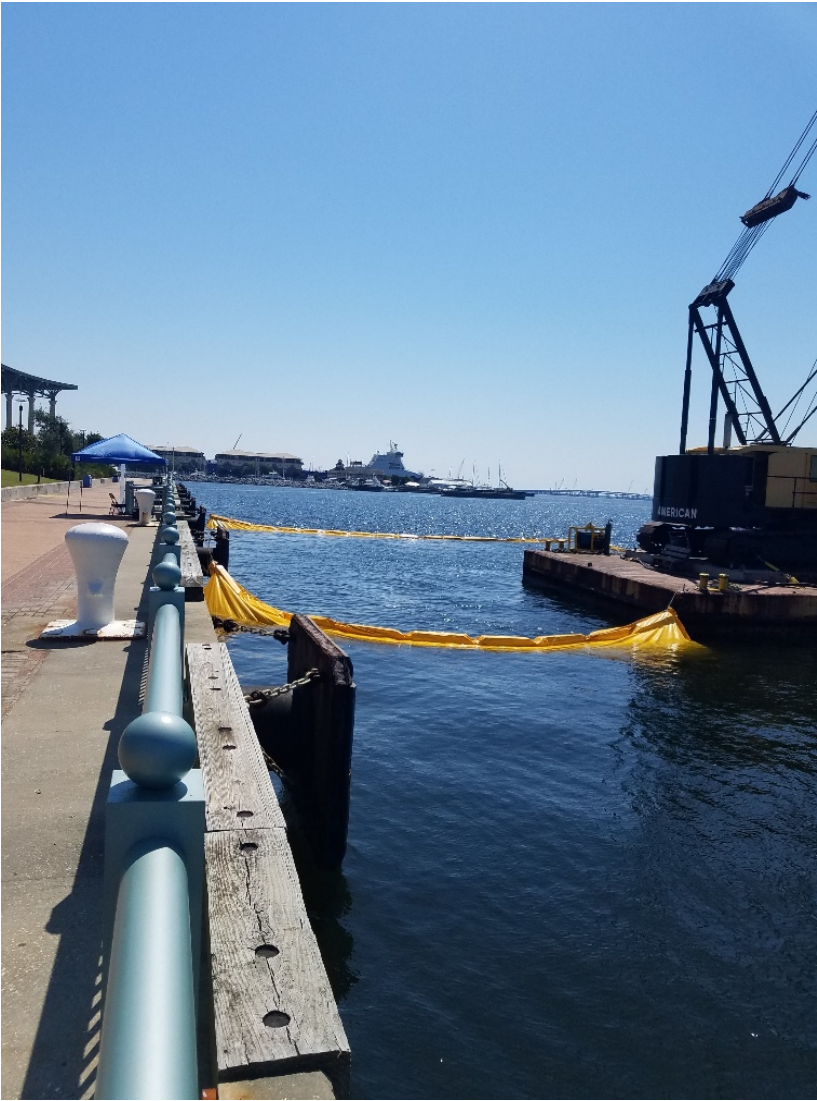
FIGURE
NUMBER

4



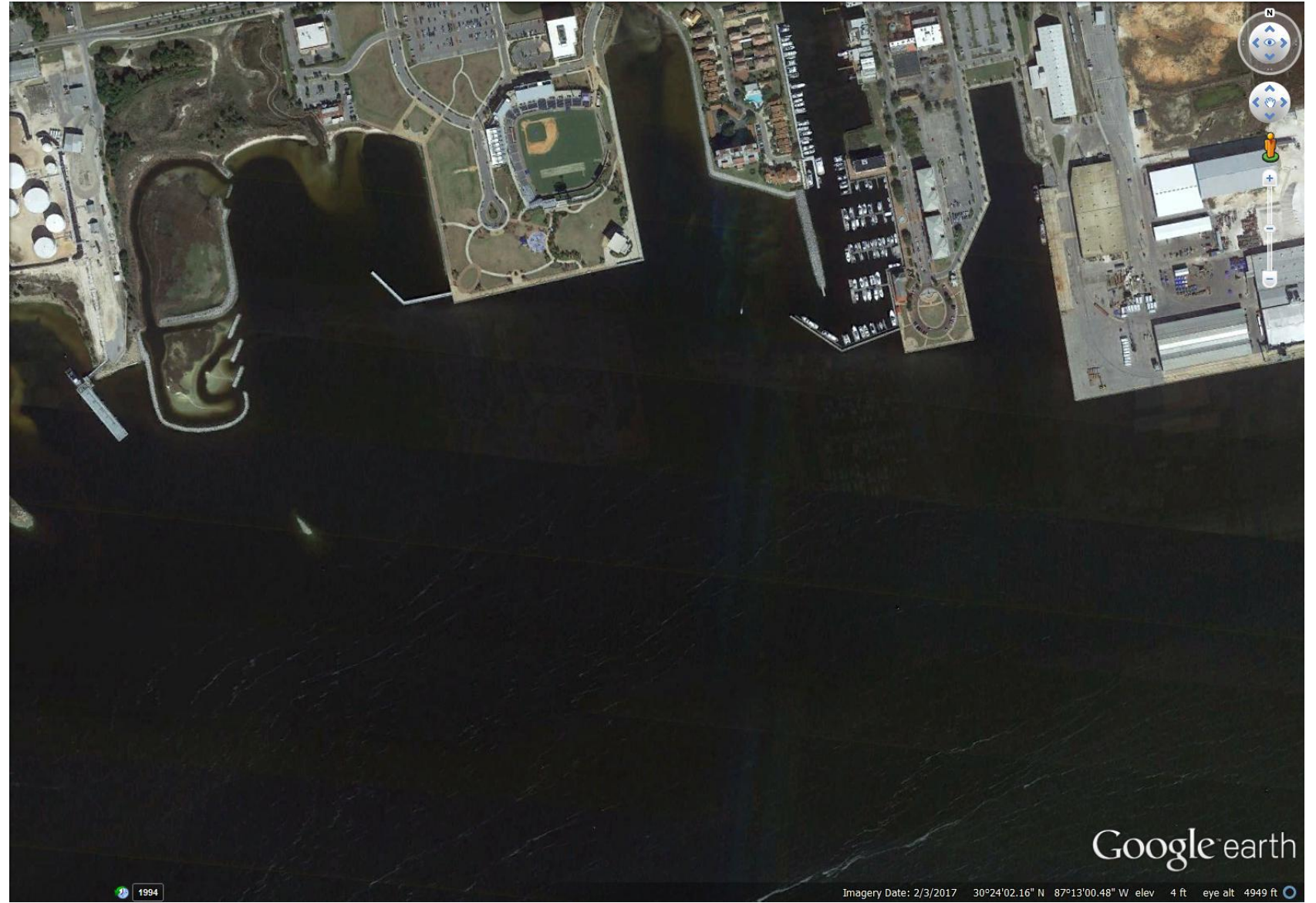
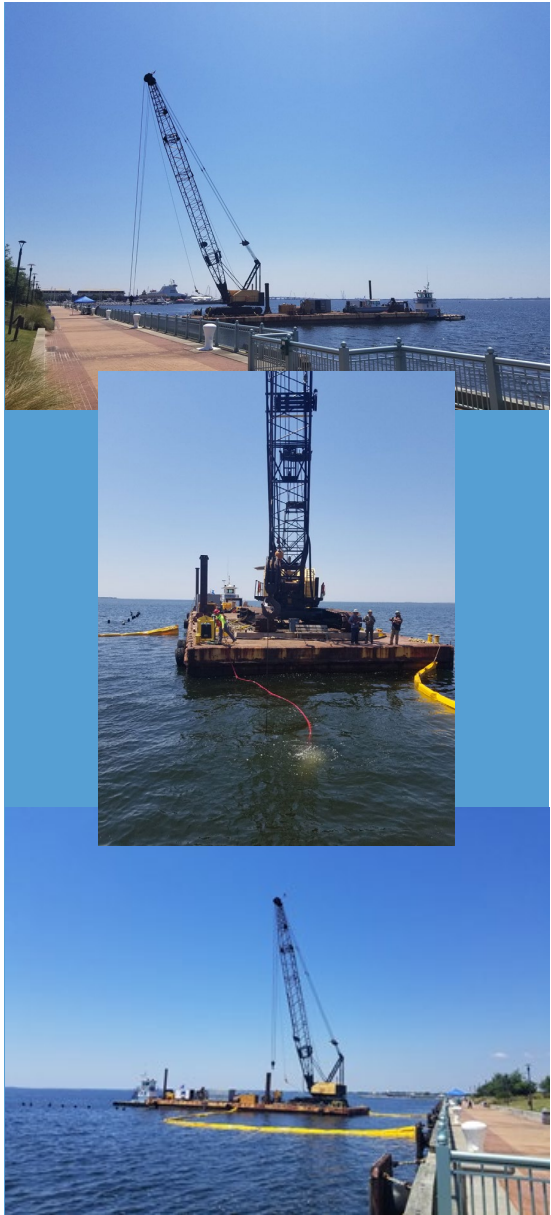












CONTACT 0881

POSITION

38.48170 81.9619 -87.216234389 (H0204)
 38.48170 81.9619 -87.216234389 (H0204)
 38.48170 81.9619 -87.216234389 (LOCAL)
 130 1133542.48 (Y) 528865.32 (PROJECTED COORDINATES)

MAP PROJECTION: FL03-HF

PINS NUMBER: 7185

RANGE TO TARGET: 71.88 US FT

HEADING: 750.00 DEGREES

TARGET HEIGHT: 5.84 US FT

TARGET SHADOW: 12.82 US FT

DESCRIPTION: OBSTRUCTION

CONTACT 0000

POSITION

38.481638 81.9619 -87.216234389 (H0204)
 38.481638 81.9619 -87.216234389 (H0204)
 38.481638 81.9619 -87.216234389 (LOCAL)
 130 1133542.48 (Y) 528865.32 (PROJECTED COORDINATES)

MAP PROJECTION: FL03-HF

PINS NUMBER: 7203

RANGE TO TARGET: 186.14 US FT

HEADING: 597.100 DEGREES

TARGET HEIGHT: 7.45 US FT

TARGET SHADOW: 87.42 US FT

DESCRIPTION: OBSTRUCTION

CONTACT0882

POSITION

38.482259389 -87.216234389 (H0204)
 38.482259389 -87.216234389 (H0204)
 38.482259389 -87.216234389 (LOCAL)
 130 1133542.48 (Y) 528865.32 (PROJECTED COORDINATES)

MAP PROJECTION: FL03-HF

PINS NUMBER: 7203

RANGE TO TARGET: 114.89 US FT

HEADING: 750.00 DEGREES

TARGET HEIGHT: 5.18 US FT

TARGET SHADOW: 15.41 US FT

DESCRIPTION: OBSTRUCTION

CONTACT0882

POSITION

38.481938 81.9619 -87.216234389 (H0204)
 38.481938 81.9619 -87.216234389 (H0204)
 38.481938 81.9619 -87.216234389 (LOCAL)
 130 1133542.48 (Y) 528865.32 (PROJECTED COORDINATES)

MAP PROJECTION: FL03-HF

PINS NUMBER: 17045

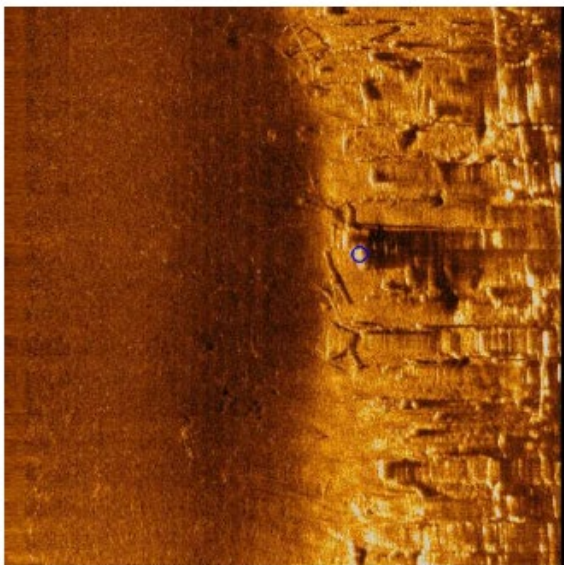
RANGE TO TARGET: 85.72 US FT

HEADING: 750.00 DEGREES

TARGET HEIGHT: 2.84 US FT

TARGET SHADOW: 14.84 US FT

DESCRIPTION: OBSTRUCTION

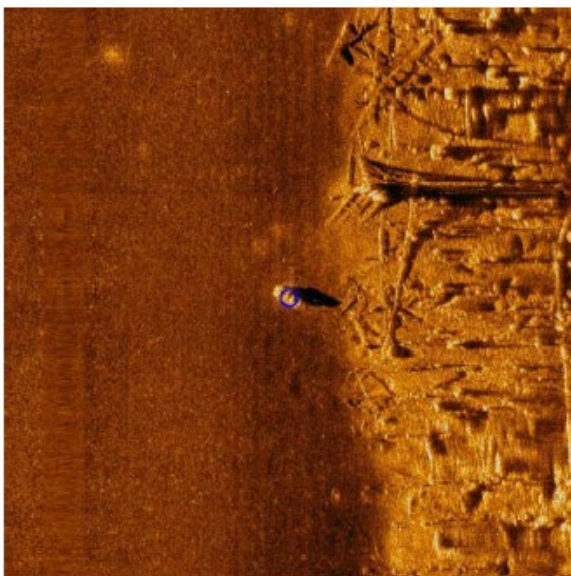


Contact0003

- Click Position
- 30.402203967 -87.2109079764 (WGS84)
- 30.402203967 -87.2109079695 (NAD27LL)
- 30.402203967 -87.2109079764 (LocalLL)
- (X) 1111551.34 (Y) 520160.09 (Projected Coordinates)
- Map Projection: FL83-NF
- Ping Number: 9595
- Range to target: 114.85 US ft
- Heading: 350.690 Degrees

Dimensions and attributes

- Target Height: 5.16 US ft
- Target Shadow: 39.41 US ft
- Description:

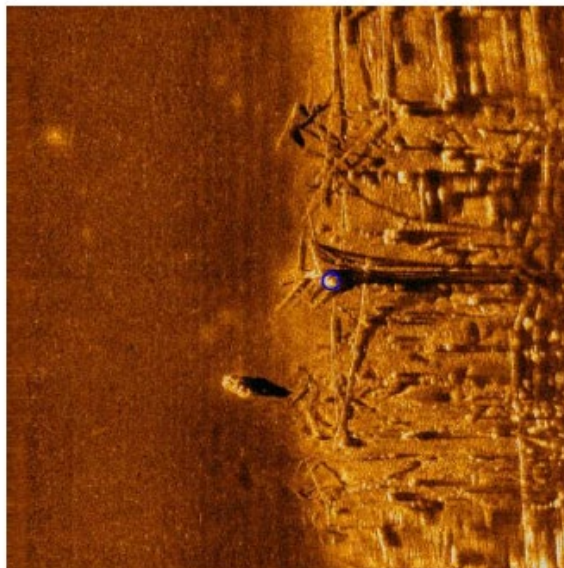


Contact0001

- Click Position
- 30.401919169 -87.2109343665 (WGS84)
- 30.4017190383 -87.2109336735 (NAD27LL)
- 30.401919169 -87.2109343665 (LocalLL)
- (X) 1111546.40 (Y) 520055.42 (Projected Coordinates)
- Map Projection: FL83-NF
- Ping Number: 9203
- Range to target: 71.60 US ft
- Heading: 352.600 Degrees

Dimensions and attributes

- Target Height: 3.04 US ft
- Target Shadow: 12.92 US ft
- Description:

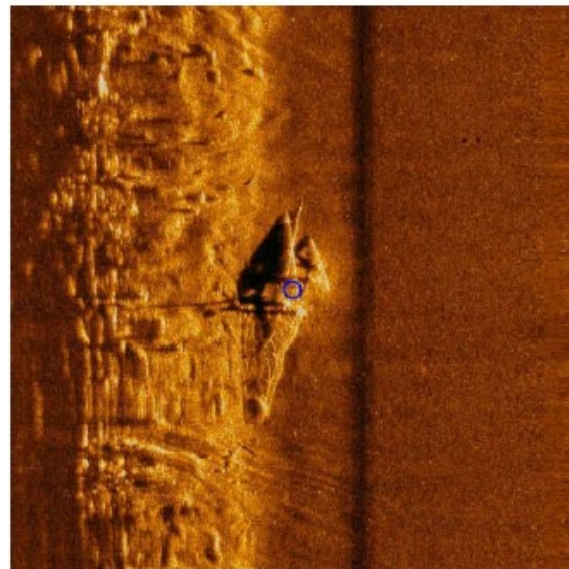


Contact0000

- Click Position
- 30.4013201251 -87.2104252725 (WGS84)
- 30.4016219121 -87.2104546635 (NAD27LL)
- 30.4013201251 -87.2104252725 (LocalLL)
- (X) 1111573.94 (Y) 520021.95 (Projected Coordinates)
- Map Projection: FL83-NF
- Ping Number: 9213
- Range to target: 105.16 US ft
- Heading: 357.100 Degrees

Dimensions and attributes

- Target Height: 7.45 US ft
- Target Shadow: 57.42 US ft
- Description:

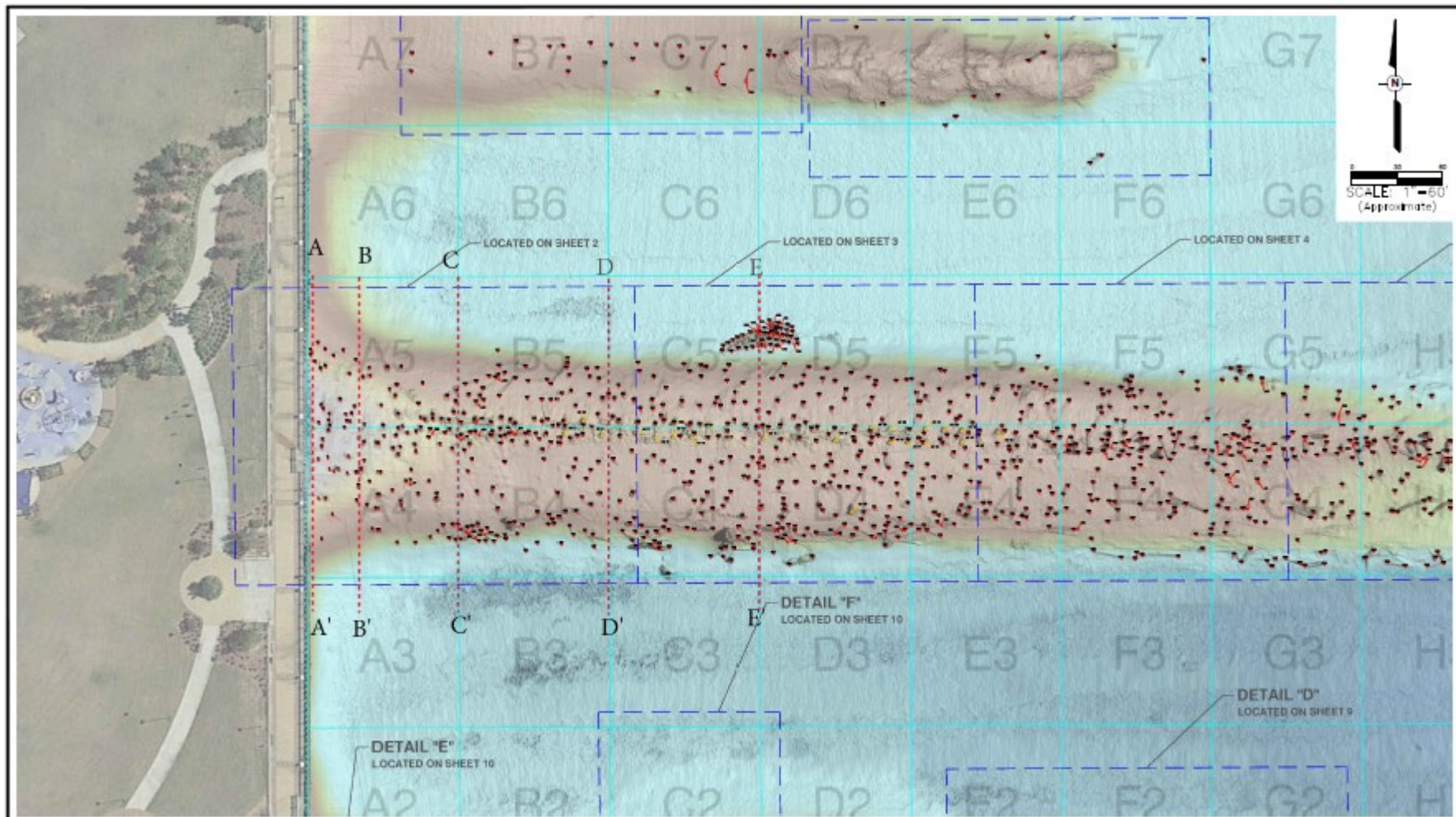


Contact0002

- Click Position
- 30.4013381597 -87.2179910946 (WGS84)
- 30.4016375462 -87.2180206879 (NAD27LL)
- 30.4013381597 -87.2179910946 (LocalLL)
- (X) 1111710.92 (Y) 520034.51 (Projected Coordinates)
- Map Projection: FL83-NF
- Ping Number: 17012
- Range to target: 86.92 US ft
- Heading: 352.500 Degrees

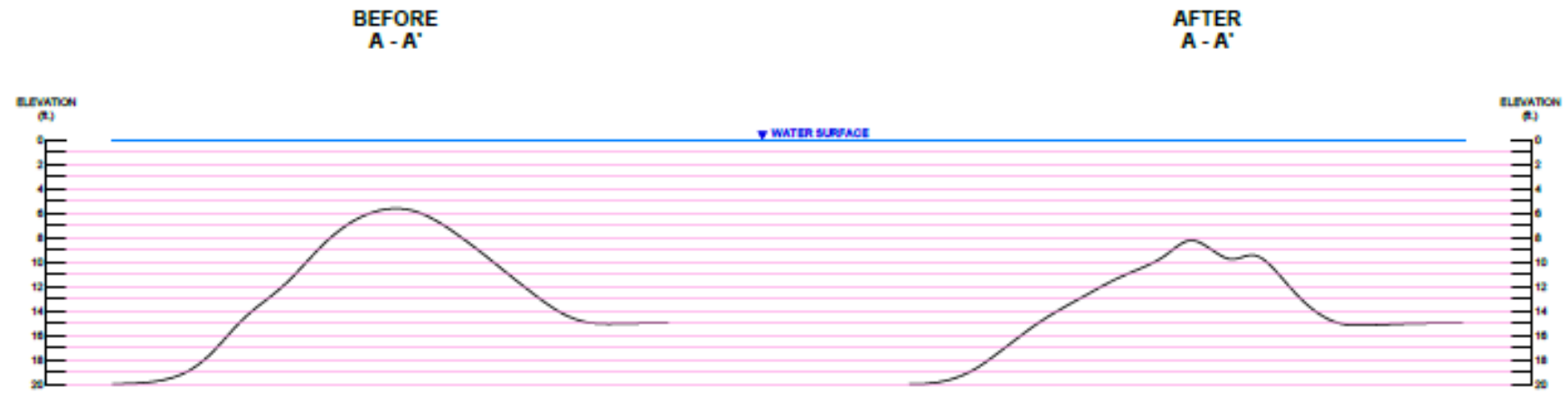
Dimensions and attributes

- Target Height: 2.04 US ft
- Target Shadow: 14.88 US ft
- Description:

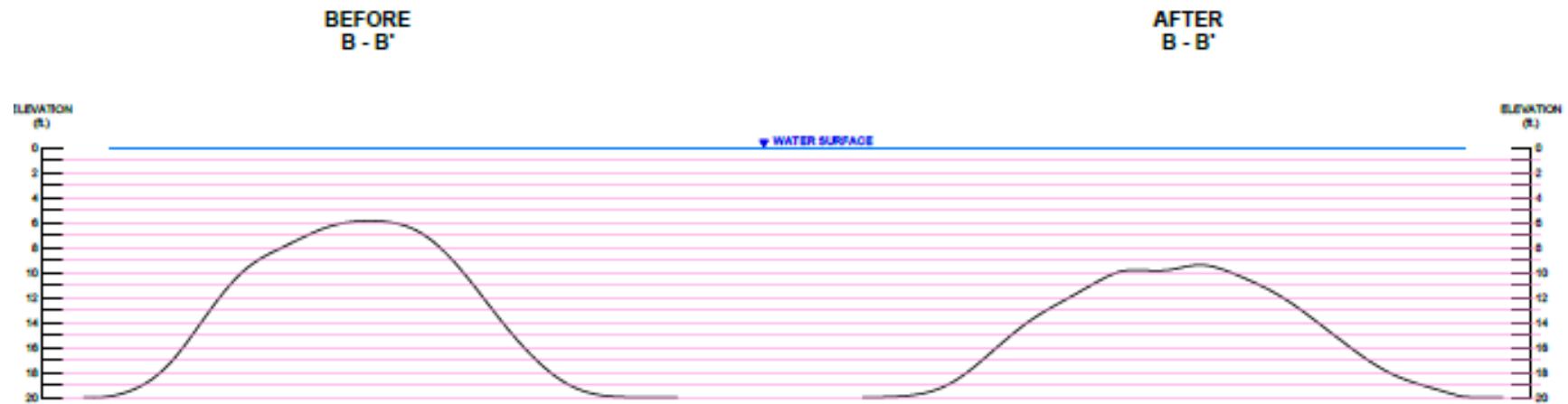


PPM PPM CONSULTANTS, INC. www.ppm.com		CITY OF PENSACOLA MARITIME PARK MARINA 300 BLOCK WEST AWIN STREET PENSACOLA, FLORIDA	PROFILE MAP	FIGURE NUMBER
DRAWN BY: JCP	DRAWN DATE: 10/10/19			6
PROJECT NUMBER: 28164004	PHASE: PM			

At the Sea Wall



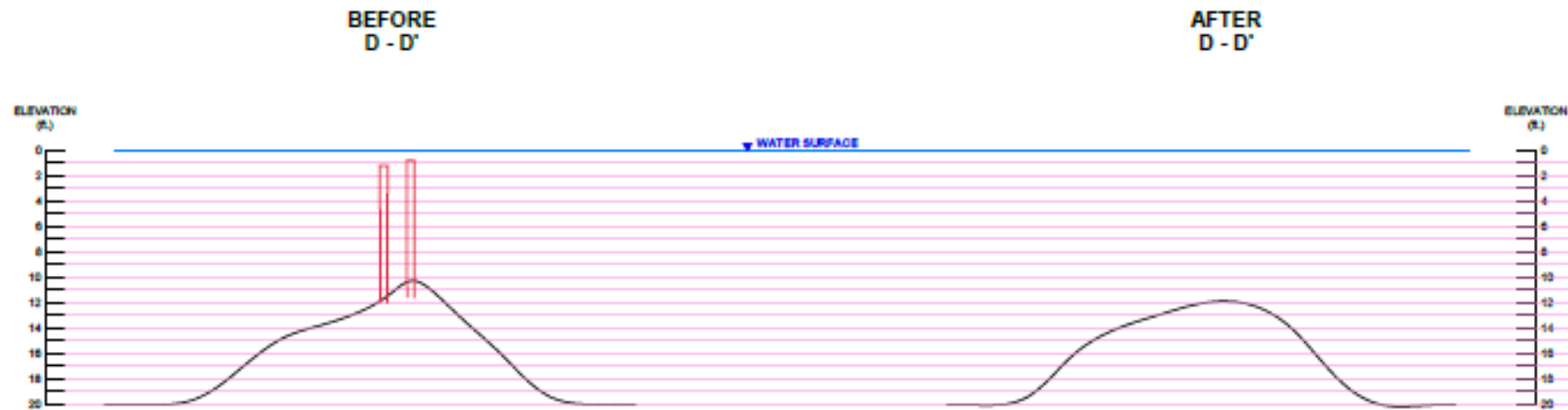
30 Feet from the Sea Wall



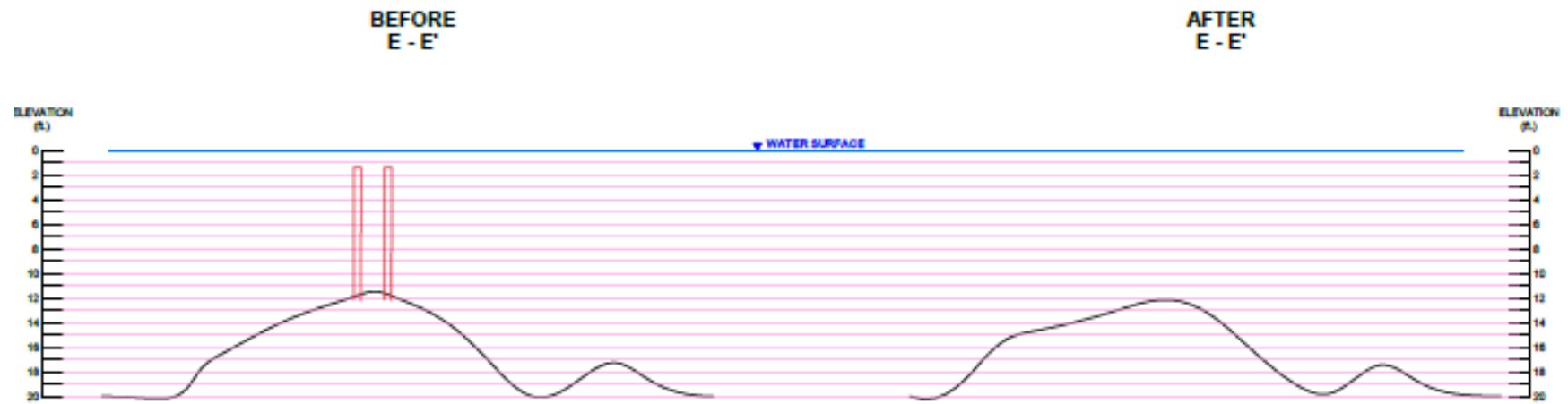
100 Feet from the Sea Wall



200 Feet from the Sea Wall



300 Feet from the Sea Wall









Questions?

Rebecca Ferguson
Waterfront Development
Project Coordinator
City of Pensacola
rferguson@cityofpensacola.com

Ben Clabaugh, P.G.
Senior Project Manager
PPM Consultants
ben.clabaugh@ppmco.com

