



Nation-wide Progress: Environmental Justice Communities Leverage EPA Brownfield Grants

October 29, 2019



Golden Rod Consulting, LLC
~ innovation makes it better ~



Citizens for Environmental Justice
Harambee House, Inc

 **Cardno®**

I. Introductions/Summary

I. Introductions/Summary

Jasmin Muriel, EPA

II. Environmental Justice & B2H Insight and Resources

Suzi Ruhl, EPA

III. NEPA Considerations

Dr. P. Qasimah Boston

IV. National Examples

Keith Ziobron, P.E., Cardno

V. A Local Perspective

Dr. Mildred McClain, Harambee House, Inc.



Golden Rod Consulting, LLC
~ innovation makes it better ~



Citizens for Environmental Justice
Harambee House, Inc



2019 Southeast Brownfields Conference

II. Environmental Justice & B2H Insight and Resources

Suzi Ruhl, EPA



Roadmap for Presentation: B2H and NEPA Synergy

What are environmental justice factors and opportunities?

What is overarching architecture for synergy?

How does NEPA relate to B2H?

What are B2H success stories?

Fundamental Relationship Between Environmental Justice & B2H & NEPA

**Executive Order
12898**

**Goals
Terms
Approaches
Outcomes**

**National
Environmental
Policy Act**

**B2H
Brownfields
to Healthfields**

Vulnerability

How we...

are born

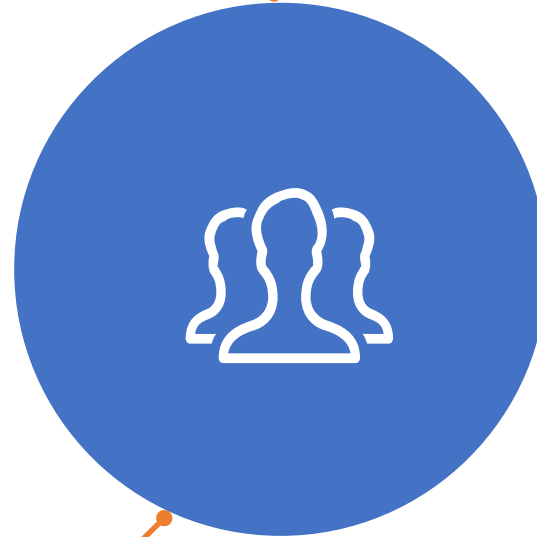
grow

live

learn

work

play



distribution factors

Race

Ethnicity

Social Standing

Income

Education

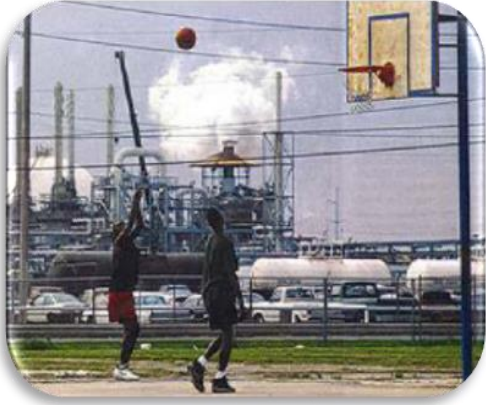
social
determinants

What is Environmental Justice?

What is Environmental Injustice?

Disproportionate Impact Factors

Proximity and Exposure



Cumulative Impacts



Physical Infrastructure



Susceptible Populations



Unique Exposure Pathways



Participating in Decision Making



PSYCHOLOGICAL STRESSORS

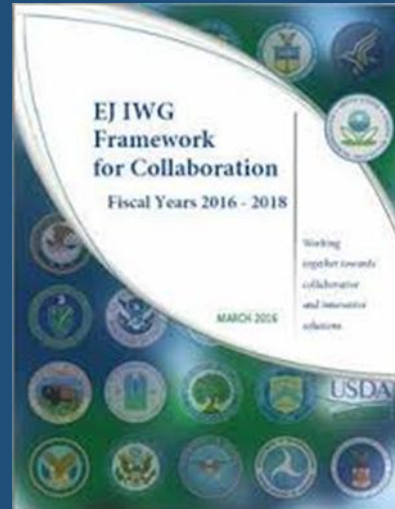
- **Each Federal agency** shall make achieving **environmental justice** part of its mission by identifying and addressing, as appropriate, **disproportionately high and adverse human health or environmental effects** of its programs, policies, and activities **on minority populations and low-income populations**.

Executive Order
12898: Federal
Actions to Address
Environmental
Justice in Minority
Populations and
Low-Income
Population



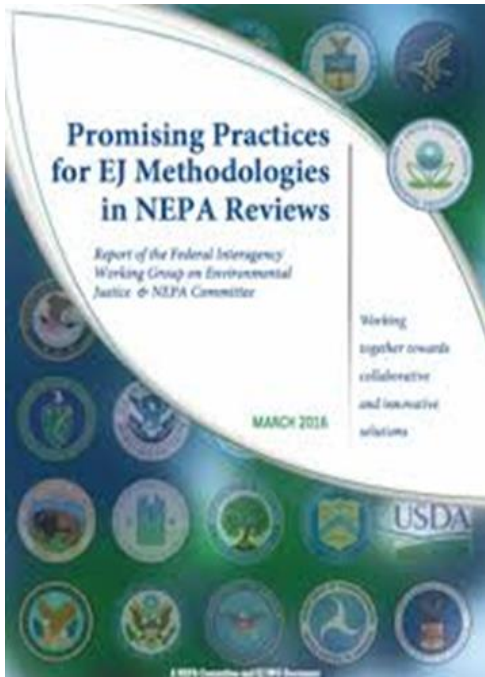
Federal Interagency Working Group on Environmental Justice

- Created by EO 12898 (1994)
- Reconvened at the Cabinet Level (2010 and 2015)
- Charter & Memorandum of Understanding in 2011
- Framework for Collaboration, FY 2016-2018 (Gap Years)

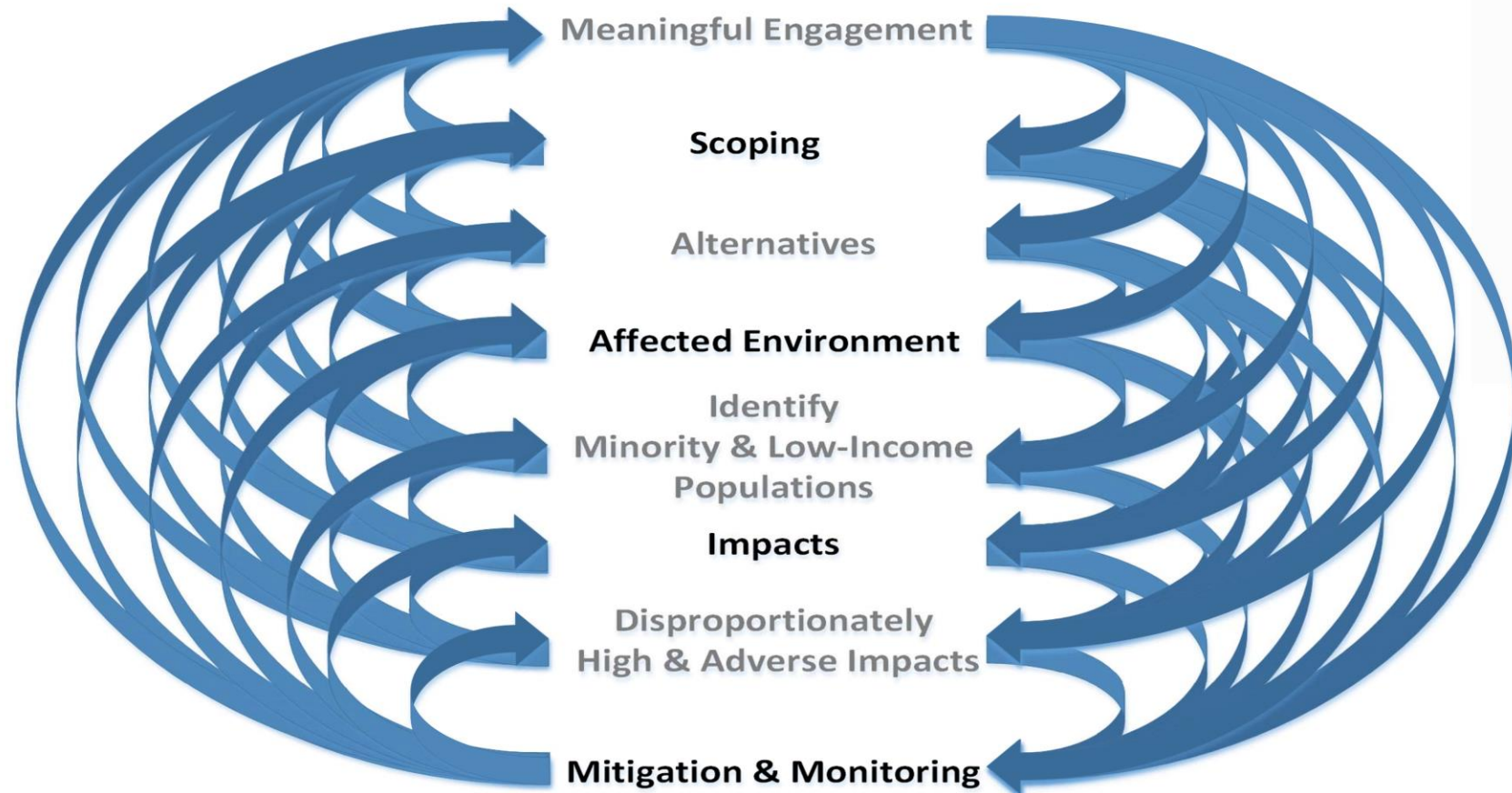


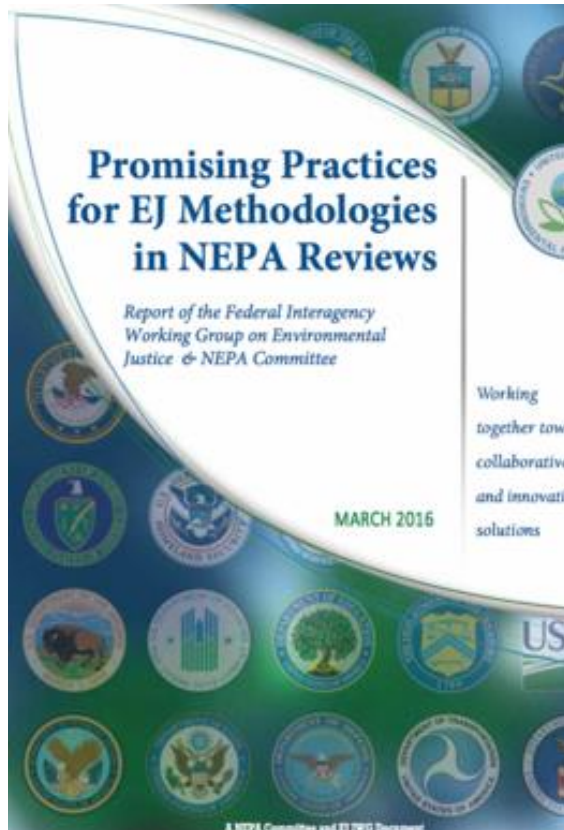
- Environmental Protection Agency (Chair)
- White House Office: Council on Environmental Quality
- Departments: Agriculture, Commerce, Defense, Education, Energy, Health and Human Services, Homeland Security, Housing and Urban Development, Interior, Justice, Labor, Transportation, Veteran's Affairs
- General Services Administration
- Small Business Administration

Advancing Consideration of Environmental Justice Through NEPA



Environmental Justice Within National Environmental Policy Act Reviews





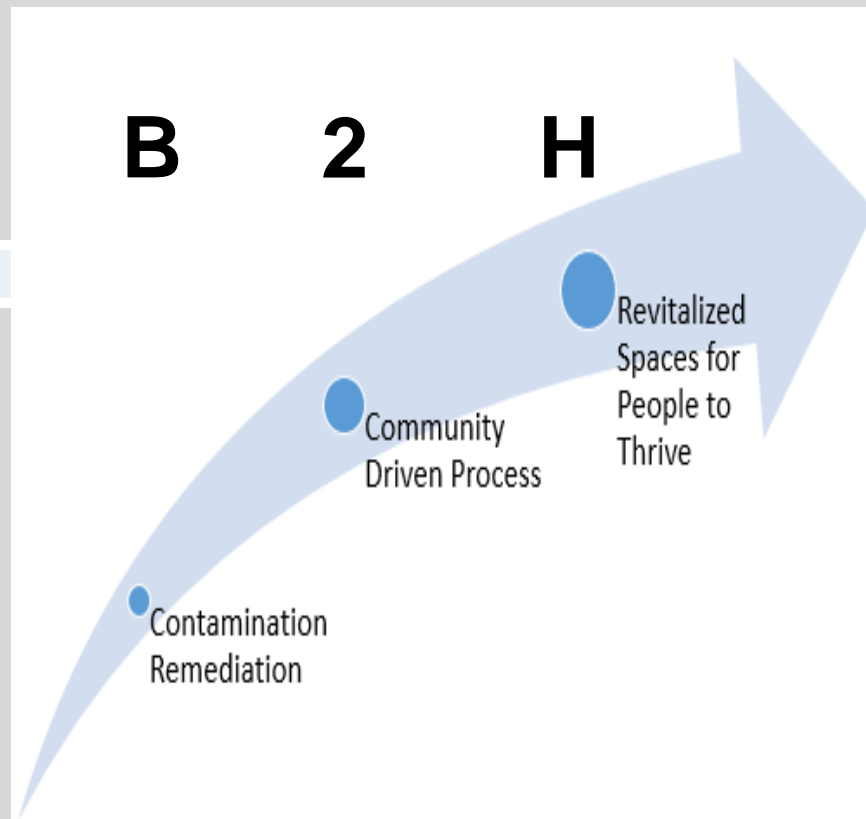
Flash Card Learning: Meaningful Engagement

- runs in two directions
 - disseminating relevant information to community
 - receiving information from community
- start early and carry through each step
- identify cultural, institutional, geographic, economic, historical, linguistic, or other barriers
- consider input from “each segment” of impacted populations



B2H: Model Approach

Transformation of contaminated properties to strengthen community health, equity, sustainability and resiliency for impacted vulnerable and underserved populations living in areas with pollution, disease, poverty and crime



Moving Forward Network

B2H National Project

⑥ ⑦

④

③

②

⑤

①
⑧
⑨

**1. Clean Water Action,
Southward of Newark**

**2. Lowcountry Alliance for
Model Communities, Charleston**

**4. Diesel Health Project, Kansas
City**

**5. Citizens for a Sustainable
Future, Tallahassee**

**6. East Yard Communities for
Environmental Justice, East
and Southeast Los Angeles,
Long Beach**

**7. Comite Civico del Valle,
Brawley**

**8. New Jersey Environmental
Justice Alliance, Newark**

**9. Ironbound Community
Corporation, East of Newark**

Powering Environmental Justice Partnerships

EVERY MOTHER MATTERS



www.NewHavenMomsPartnership.org

Community-Driven Outcomes

Behavioral wellness

Community Ambassador Job Creation

Evidenced-based Adaptive Approach

Replicable and Scalable Model

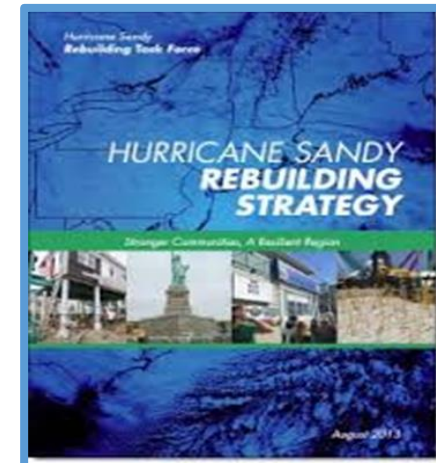
Design:

Partnership of community organizations, academic, private sector, clinical care, government

Special Assets:

\$6.2 million Hurricane Sandy Social Service Block Grant

B2H Success Model: Mental Health and Economic Resiliency Neighborhood Hubs



ALIGNING TO BUILD RESILIENT AND INCLUSIVE COMMUNITIES

2018 National Interagency Community Reinvestment Conference

B2H Success: Agriculture and Health (Los Angeles, CA)

- Community Conservation Center
- Technology Lab
- Financial Empowerment Center
- Fitness Workshops
- Community Garden & Healthy Living Café
- Job Training & Leadership Development for Youth, Adults & Re-entry Clients
- Public Safety & Enforcement Drop-in Site
- Senior & Afterschool Programs
- Small Business Center & Incubator
- Health & Vision Clinic
- 3D Learning Lab



Photo from Neighborhood Housing Services Center for Sustainable Communities

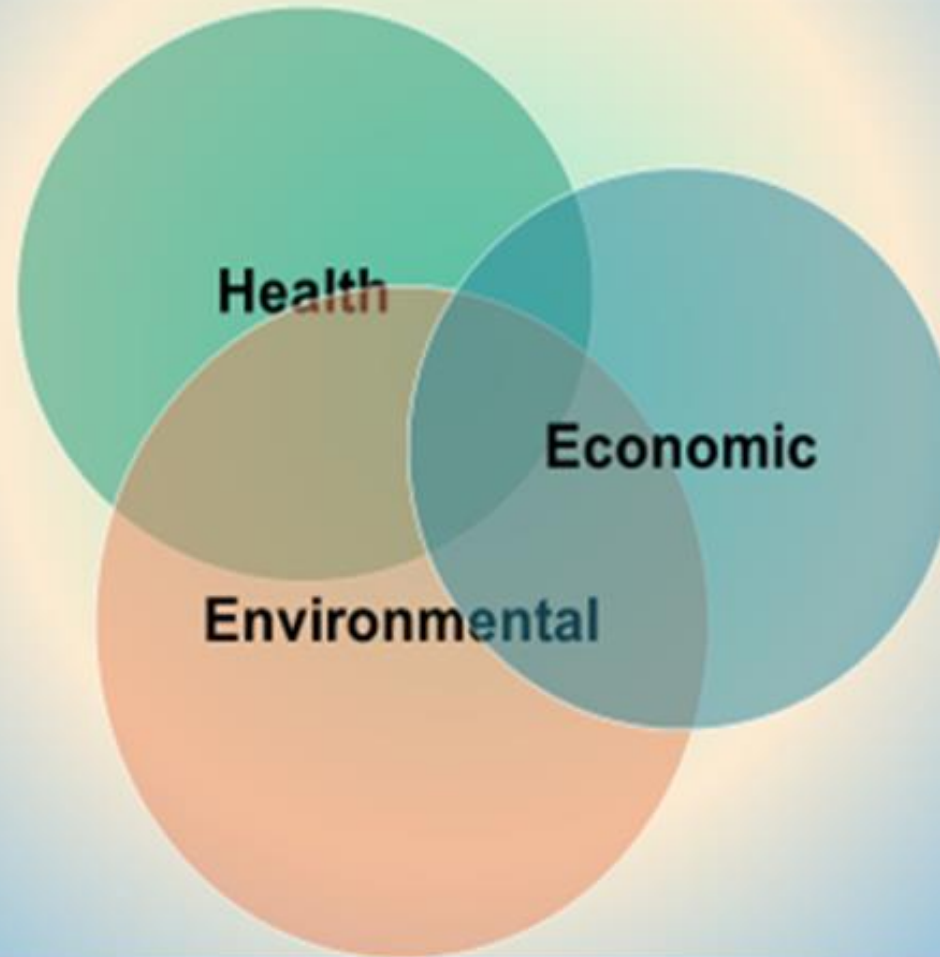
Championing the Triple Bottom Line for Community Infrastructure in Central Appalachia

- Vision health as driver for B2H
- Government resources aligned with community identified needs
- Health, environmental and economic vitality for rural communities



**B2H
and
NEPA**

Triple Bottom Line Benefits





2019 Southeast Brownfields Conference

III. NEPA Considerations

Dr. P. Qasimah Boston

Golden Rod Consulting, LLC
~ innovation makes it better ~



REWIND: ENVIRONMENTAL JUSTICE AND NEPA OF 1969

Dr. P. Qasimah Boston
Tallahassee Food Network
Moving Forward Network
For
2019 Brownsfield¹⁹ Conference
Orlando, FL

Objectives

1. Frame environmental justice with the NEPA
2. Increase awareness of current activities to rollback NEPA
3. Encourage action to prevent the rollback of NEPA



A word cloud on a white rectangular background, tilted at an angle. The words are in various colors and sizes, representing different environmental policy concepts. The largest word is 'rollback' in dark red. Other prominent words include 'rubberstamp' in dark blue, 'categorical exclusion' in dark blue, 'EA' in dark red, 'streamlining' in dark blue, 'reform' in dark blue, 'waive' in dark blue, 'permitting' in brown, and 'infrastructure package' in brown.

rollback

rubberstamp

EA

streamlining

reform

waive

permitting

categorical exclusion

infrastructure package

Framing???



Case Study: Savannah River Site



Deadly legacy: Savannah
River site near Aiken one of
the most contaminated places
on Earth

BY DOUG PARDUE DPARDUE@POSTANDCOURIER.COM



Ellenton



Dunbarton



Snelling

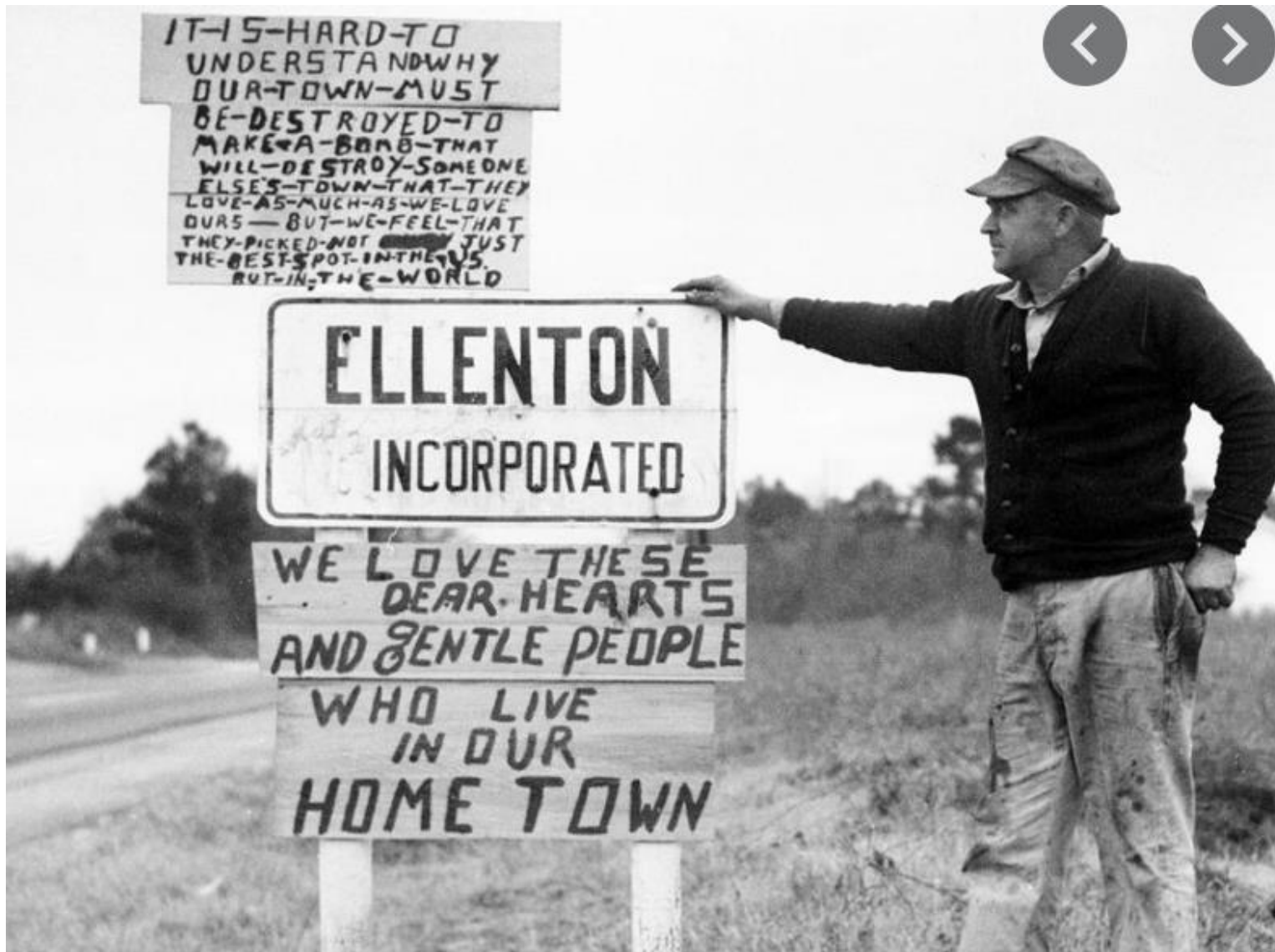


Jackson



New
Ellenton

- 1950
- 6000 residents affected
- 15 months to leave
- Renters got no compensation
- Mixed feelings about leaving

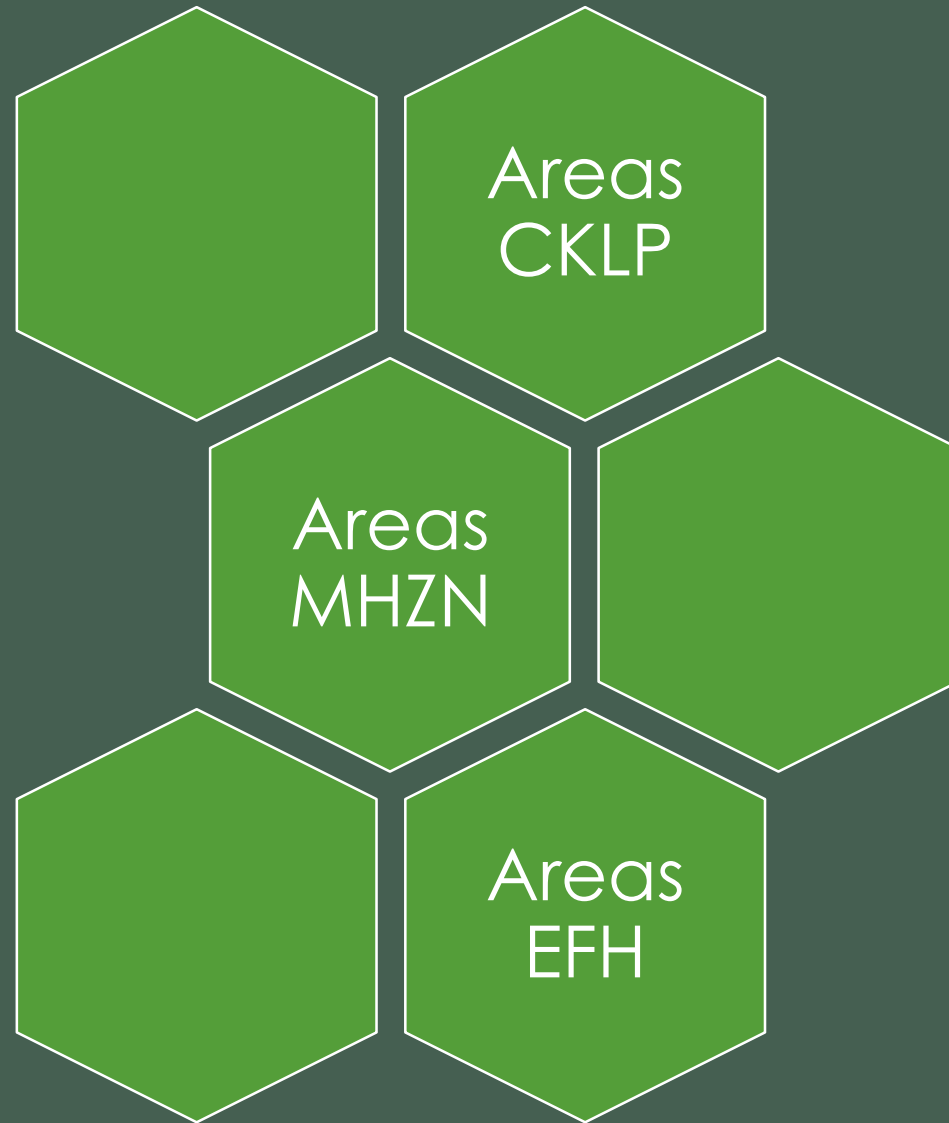


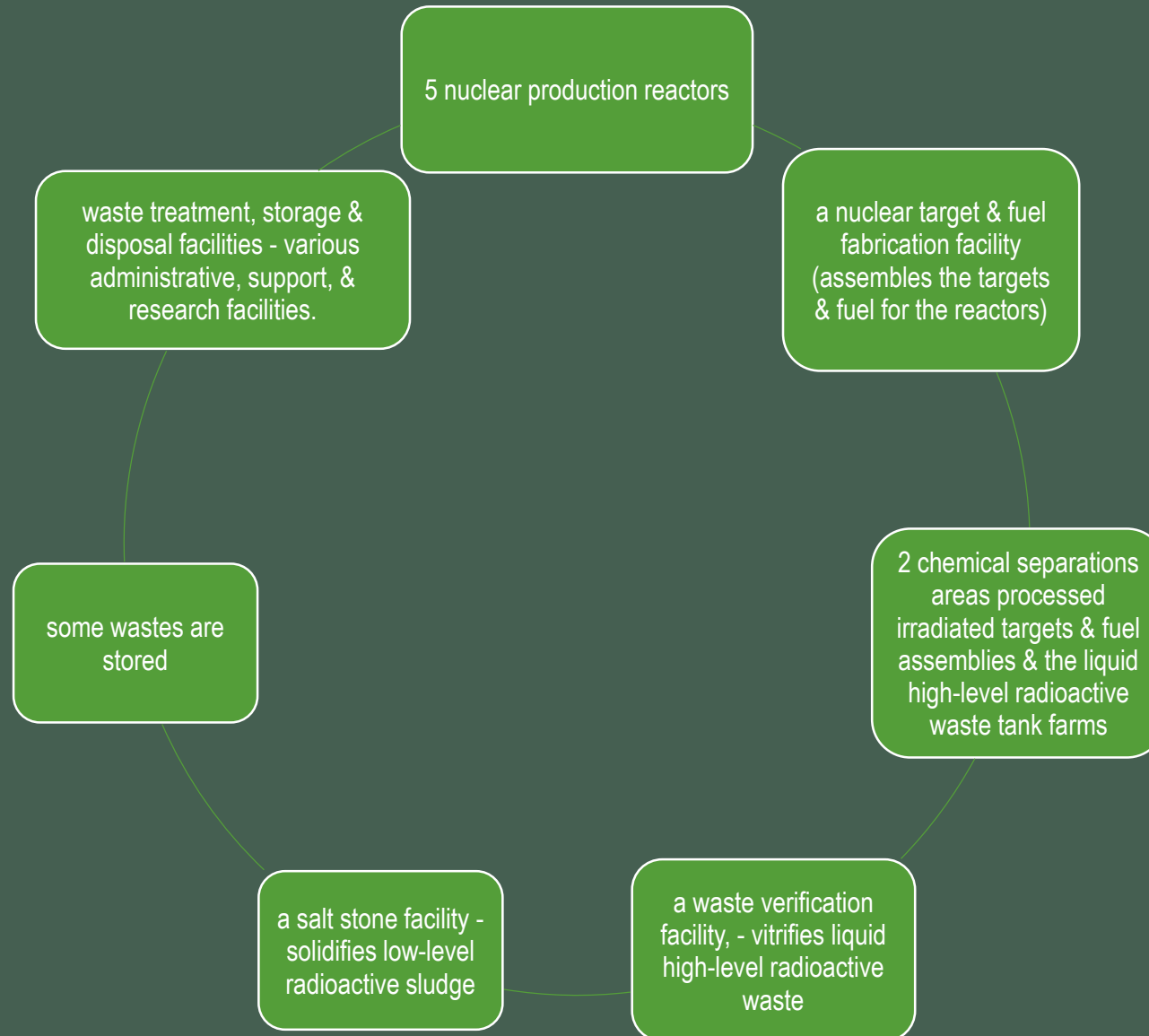
Why must our town be destroyed?

The Savannah River Site

SRS is a 310-square-mile site located near Aiken, S.C., on the Savannah River, which borders South Carolina and Georgia. SRS covers 198,046 acres, including parts of Aiken, Barnwell and Allendale counties in South Carolina. The SRS annual budget is approximately \$2 billion, with a workforce of about 11,000.







No National Environmental Policy Act Until 1969

- It happened fast
- No promotion of efforts to prevent/eliminate damage to the environment
- No Council on Environmental Quality
- No requirement of federal agencies to assess human/environmental effects of their proposed actions before making decisions.



An Environmental Justice Issue



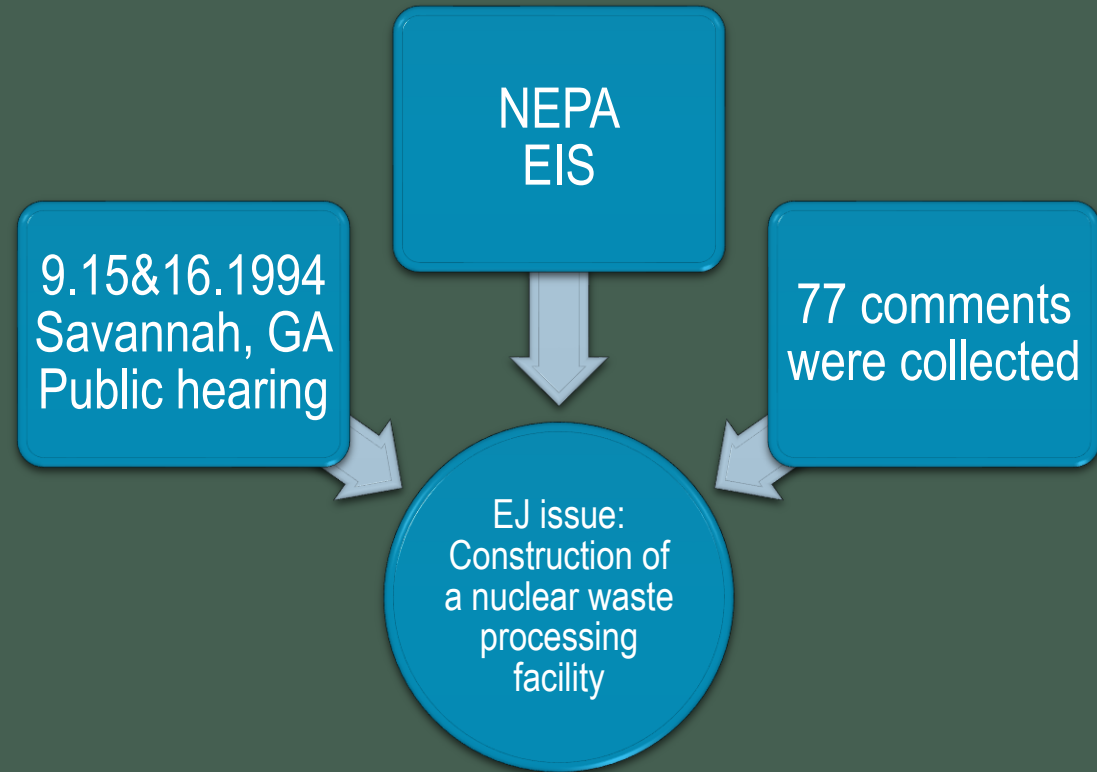
The
Savannah
River Site

A NEPA Framework: 1991 SRS Interviews

- 85 South Carolina & Georgia residents
- Interviews were with; congressional, federal, and state officials; local officials; environmental organizations; public interest groups; residents of surrounding communities; residents downstream of SRS; and private citizens
- Concerns: contamination of the Savannah River, air, groundwater



A NEPA Framework: Environmental Impact Statement



49 YEARS OF NEPA








cornerstone piece of legislation - it establishes policy, sets goals, and provides means for carrying out the policy

protects health, air, water, soil

MORE IMPORTANT - NEPA promotes transparency and citizen participation in public decisions, empowerment of community voices

Trump administration working to undermine NEPA with language in must-pass transportation reauthorization bill

CURRENT ACTIVITIES TO ROLL BACK NEPA

	53	32	85
	ROLLBACKS COMPLETED	ROLLBACKS IN PROCESS	TOTAL ROLLBACKS
 Air pollution and emissions	10	14	24
 Drilling and extraction	9	9	18
 Infrastructure and planning	12	1	13
 Animals	9	1	10
 Toxic substances and safety	4	1	5
 Water pollution	5	2	7
 Other	4	4	8

NEPA ROLLBACK: ONE FEDERAL DECISION POLICY for major infrastructure projects

1. The most damaging NEPA rollback
2. Arbitrary 2-year limit on review
3. Federal government can only have one decision - demoting federal agencies with health or conservation expertise.

Over the past years over 180 pieces of legislations have been aimed to weaken or waive NEPA protections (Earth Justice, 2019)

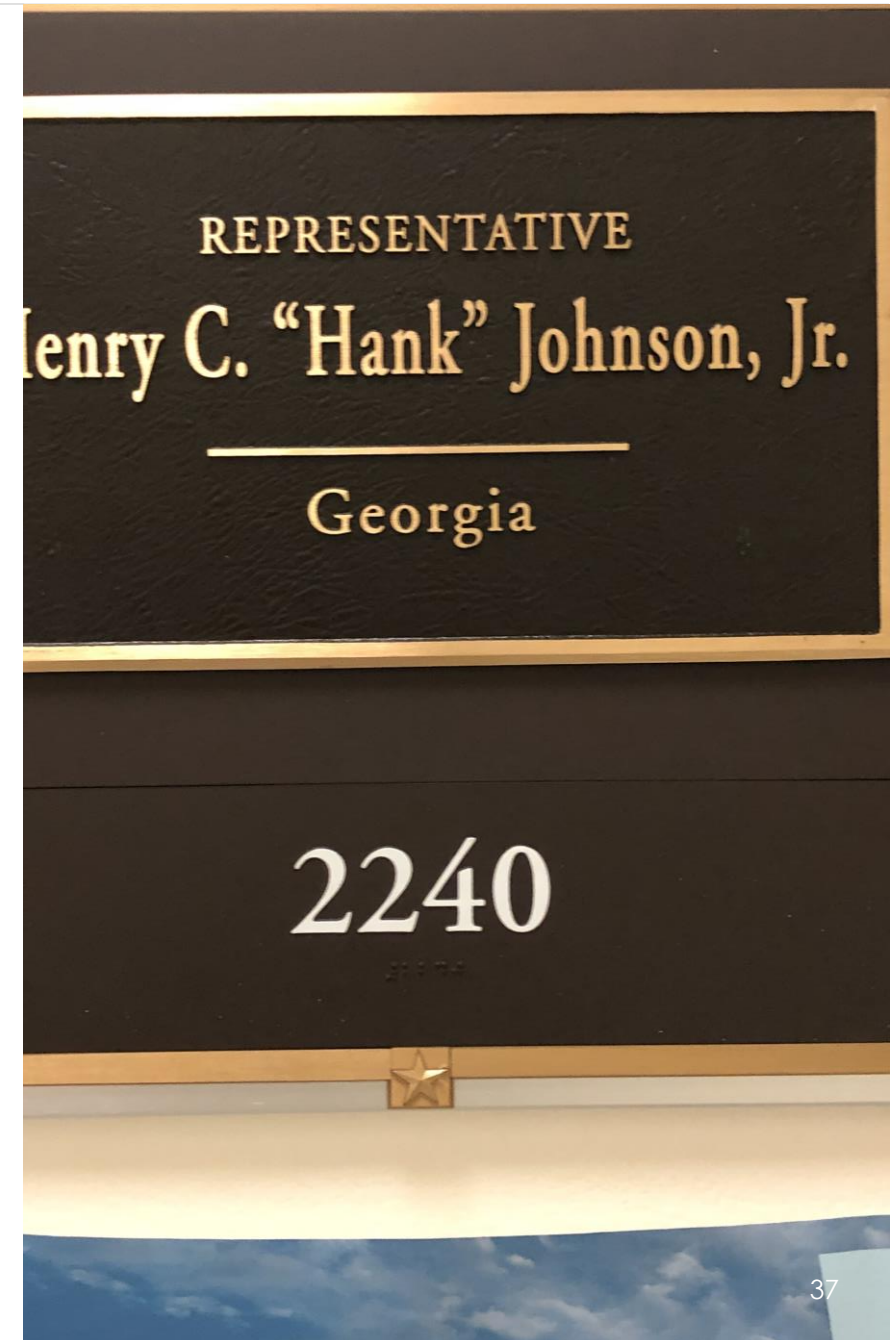


NEPA Rollback US Forest Service

- Eliminate public participation & reduce the role of science in majority of land management decisions.
- Increase the speed and scale of resource extraction including mining and logging
- The Forest Service has proposed to fast track decisions under the new, “categorical exclusions.”

NEPA ROLLBACK Transportation Bill

- The \$105 billion transportation bill's 600-plus pages are provisions that exempt many major road projects from NEPA review
- A block of public input during the final stage of the NEPA process
- Unprecedented rollback of NEPA safeguards



WAYS TO TAKE ACTION TO SUPPORT PREVENTION OF NEPA ROLLBACK

With Tallahassee Food Network: Collards & Cornbread

We are educating our communities on NEPA and asking our Network to speak with and ask our senators and representatives to say NO to ROLLBACK of NEPA

With MFN:

We have gone to our congressional representatives in DC to educate on NEPA and ask for them to support NO ROLLBACK

education of our communities on what NEPA is and its importance

IN CLOSING

- Environmental justice is about improving and maintaining a clean and healthful environment for us all.
- When framed with NEPA Environmental Justice has wings.....
- Communities of Color struggle to be part of the decision-making process.
- Our voices are important especially when the decisions and policies impact the health and wellness of our communities.
- KEEP NEPA as it is! DON'T DISMANTLE IT, ELEVATE IT!
- ...because participatory process -- the opportunity for promotion of democratic & civic processes.

References

- Department of Energy (1994). Final Supplemental Environmental Impact Statement. Defense Waste Processing Facility. Retrieved from <https://books.google.com/books?id=2AoxAQAAMAAJ&pg=SL120-PA10&lpg=SL120-PA10&dq=NEPA+Qasimah+Boston&source=bl&ots=KzHLrjGk48&sig=ACfU3U0VKPmWoHujV3OvT5gcD70YBVEjiQ&hl=en&sa=X&ved=2ahUKEwjK3-vCjr7IAhWkdt8KHRAvCkkQ6AEwBnoECAgQAg#v=onepage&q=NEPA%20Qasimah%20Boston&f=true>
- Laws. (n.d.). Retrieved from <https://ceq.doe.gov/laws-regulations/laws.html>
- Summary of the National Environmental Policy Act. (2018). Retrieved from <https://www.epa.gov/laws-regulations/summary-national-environmental-policy-act>
- The National Environmental Policy Act of 1969, as amended. (n.d.). White House [PDF file]. https://www.whitehouse.gov/sites/whitehouse.gov/files/ceq/NEPA_full_text.pdf
- What is the National Environmental Policy Act? (2017). Retrieved from <https://www.epa.gov/nepa/what-national-environmental-policy-act>



QUESTIONS? CONTACT US

tallahasseefoodnetwork@gmail.com
projectfoodnow@gmail.com



2019 Southeast Brownfields Conference

III. National Examples

Keith Ziobron, P.E.

Albany, NY – Sheridan Hallow ANSWERS Plant 1994

Los Angeles Times

New York Accused of Racism on Incinerator Site : Albany: Blacks were told the plant posed no hazard. Blackened snow at governor's mansion brought action.

By NEKESA MUMBI MOODY

MARCH 6, 1994
12 AM

ASSOCIATED PRESS

ALBANY, N.Y. — For the last 12 years, officials have assured residents of a predominantly black neighborhood in Albany's inner city that a trash-burning incinerator was no health threat.



"... (But) no one's looking at that," she said. "They have not bothered, because this area is 99% black. They have never bothered. If it was in a white community, five or 10 kids, they would say, 'That's outrageous.'"

Until Jan. 29, the day it closed, the plant burned approximately 350 tons of waste each day--sending arsenic, lead, mercury and other pollutants into the air. It also provided steam to heat and cool the nearby offices of Gov. Mario Cuomo and state legislators.

Brownfield Grant Focus on Varying EJ Community Priorities

EJ Factors

> **Lake County Oregon**

- Uranium Processing
- The Death of the Lumber Industry
- Blight & Developable Land

> **Greenville, MS**

- Job Loss
- Persistent Flooding
- Blight

> **Savannah, Georgia**

- Significant socio-economic disparities
- Food Desert
- Blight/Lead Exposure

Brownfield Grant Priorities

> **Lake County Oregon**

- Quality Mixed Income Housing to Support New Alternative Energy Boom
- Blighted Property/Development Opportunities Inventory & Development Demand Analysis

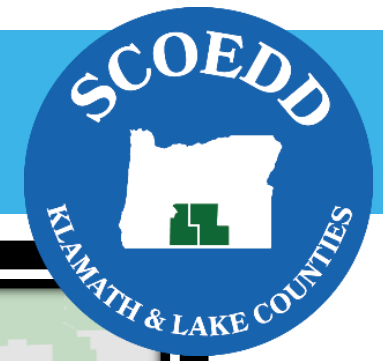
> **Greenville, MS**

- Job Generation/Blight
- Focus On Blighted Industrial Inventory - FY2018
- FY2020 Focus On “Gas Station Alley”

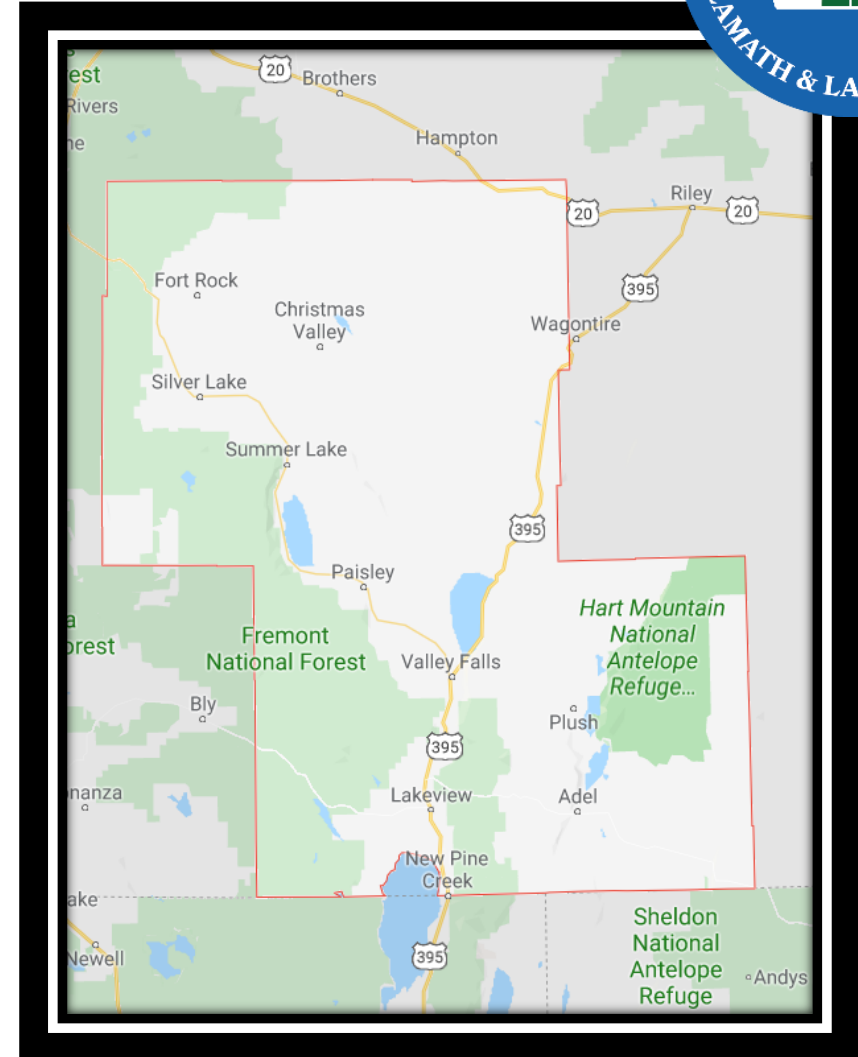
> **Savannah, Georgia**

- Robust Community Engagement Program
- Brownfield Advisory Board
- Focus on Developable Sites that will Jobs, Healthcare, & Healthy Foods

Lake County Oregon



- > Area: 8,358 mi² (~7 times the State of Rhode Island)
- > Founded: October 24, 1874
- > Population: 7,863 (2017)
- > County seat: Lakeview
- > South Central Oregon Economic Development District (SCOEDD)
Applied for & Received FY 2018 Brownfield Coalition Assessment Grant





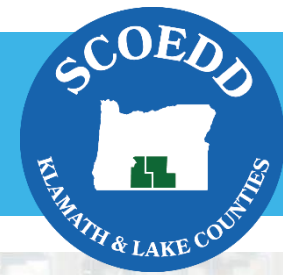
Sites Assessed

- > 4805 Repair
- > Alger Theater
- > Carlon Mill
- > Lakeview Mill
- > Lakeview Reclaimed lumber
- > K&L Mortuary
- > Lakeview Lockers

Planning Related Activities

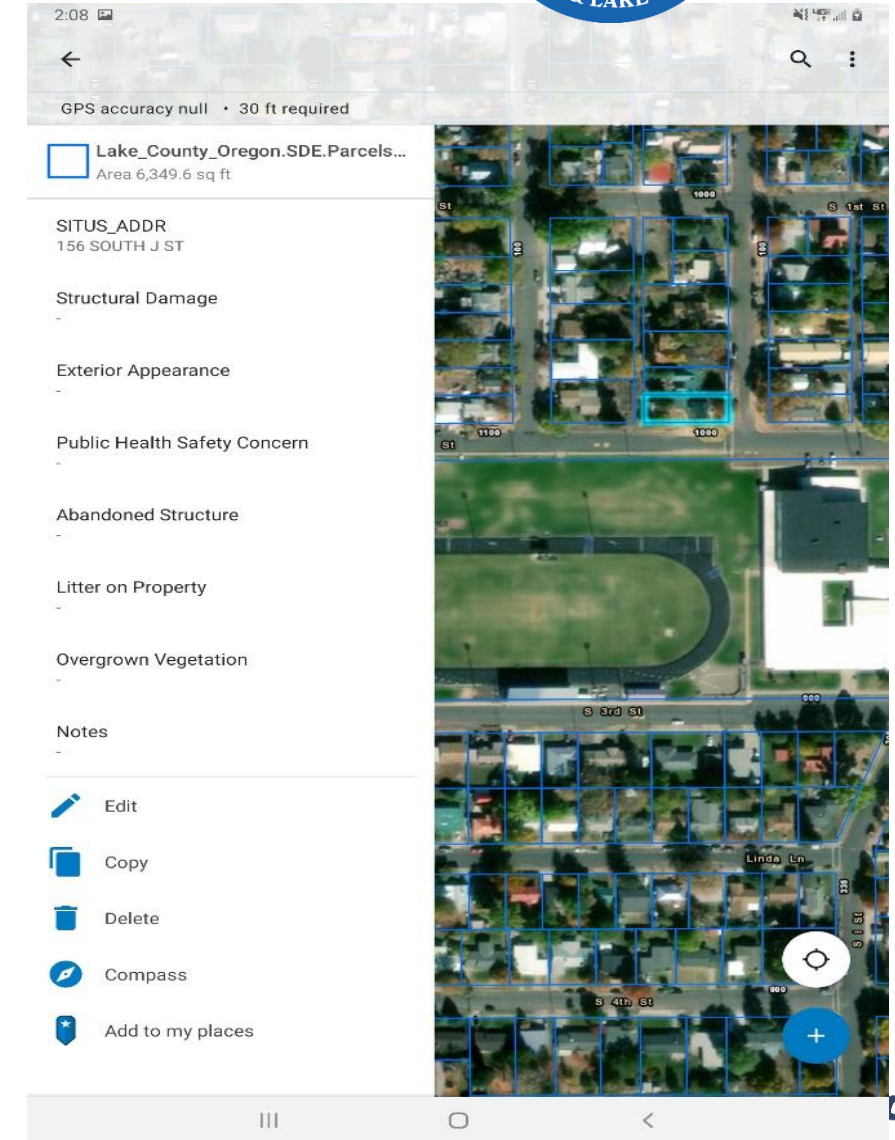
- > Development Demand Analysis (To Supplement Housing and Economic Development State Funded Grant Studies)
- > Concept-level Development Plans & Proforma for Carlon and Lakeview Mills
- > Development Opportunities Inventory

Development Opportunities Inventory



Phases

- Data Collection
- ESRI Geodatabase Design
- Inventory
- Map Viewer Development
- Reporting

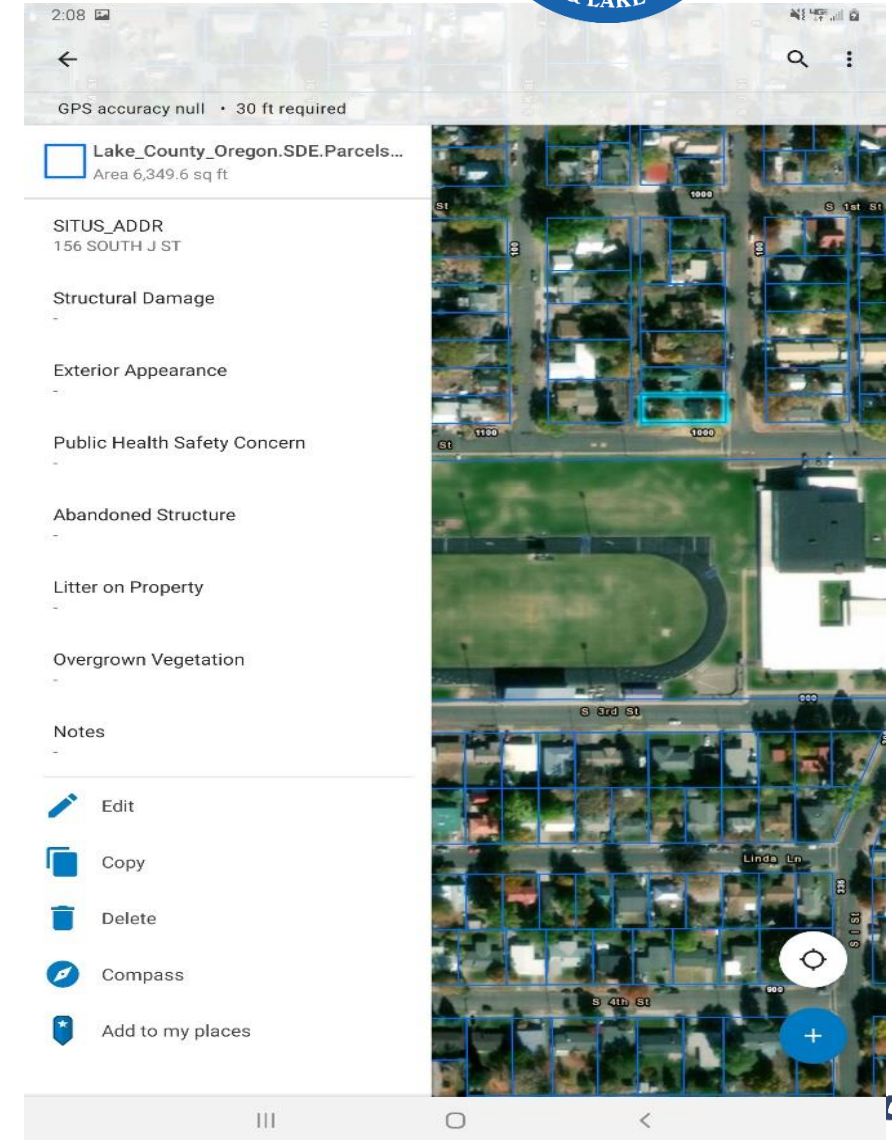


Mobile Data Collection



ArcGIS Collector

- Mobile Data Collection App
- ArcGIS Online
- ArcGIS Portal
- Map Service
 - Online/Offline Editing
 - ESRI Basemaps
- Capture development opportunity details
- Inspector Information
- Photo Attachments



Greenville, MS | Key Projects 1 - Axminster



U.S. Axminster – former carpet manufacturer

- Performed a Phase I ESA
- Environmental concerns with historic manufacturing operations
- Performed an Ecological and Wetland Assessment
- Determined no active wetlands in former building footprint
- Performed a Phase II ESA
- Identified no contamination of concern
- Site currently being evaluated for redevelopment

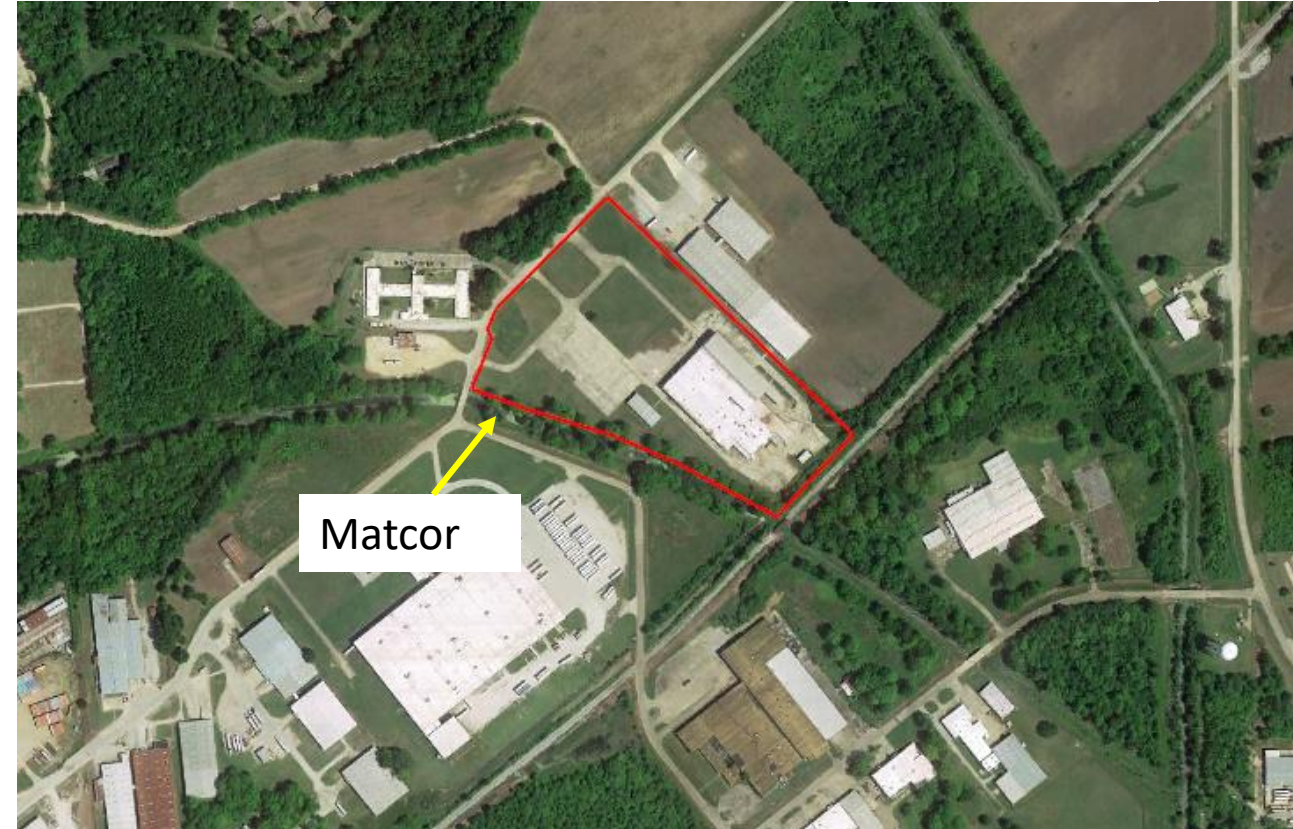


Greenville, MS | Key Project 2 - Matcor

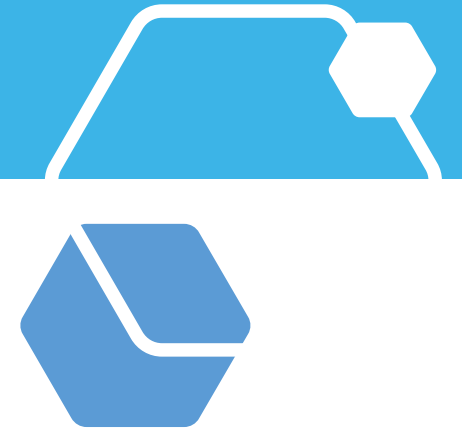


Matcor (formerly Cleaver Brooks)

- Performed a Phase I ESA
- Environmental concerns with historic boiler manufacturing
- Performed an asbestos inspection – none identified
- Performed a Phase II ESA – identified minor petroleum contamination on eastern corner
- Property has since been purchased and currently a \$20M project with 68 jobs to be created starting April 2019



Matcor 2017

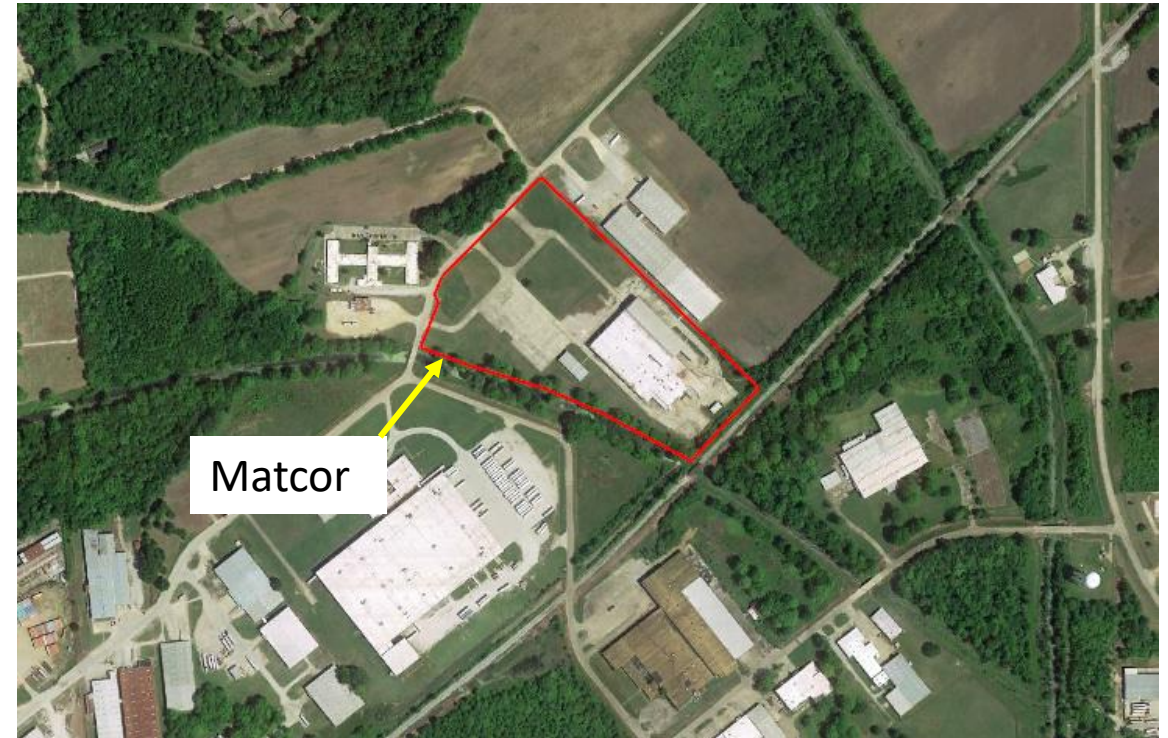


Key Projects - Matcor

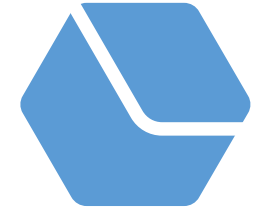


Matcor (formerly Cleaver Brooks)

- Performed a Phase I ESA
- Environmental concerns with historic boiler manufacturing
- Performed an asbestos inspection – none identified
- Performed a Phase II ESA – identified minor petroleum contamination on eastern corner
- Property has since been purchased and currently a \$20M project with 68 jobs to be created starting April 2019



Nufarm - 2019

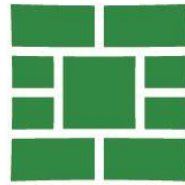


The Win

21
HIRES
To Date



City of Savannah Brownfield Background



- > No previous municipal experience in EPA Brownfield program or grant awards
- > Applied for EPA's Community-Wide Assessment Grant three times since 2015 prior to being awarded in 2018
- > Built partnerships with local nonprofits, community organizations, neighborhood associations



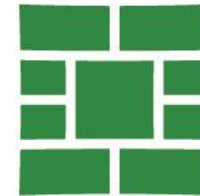
The SAVANNAH, GA Team



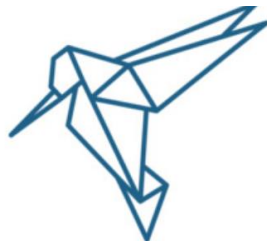
Citizens for Environmental Justice
Harambee House, Inc



SAVANNAH
savannahga.gov



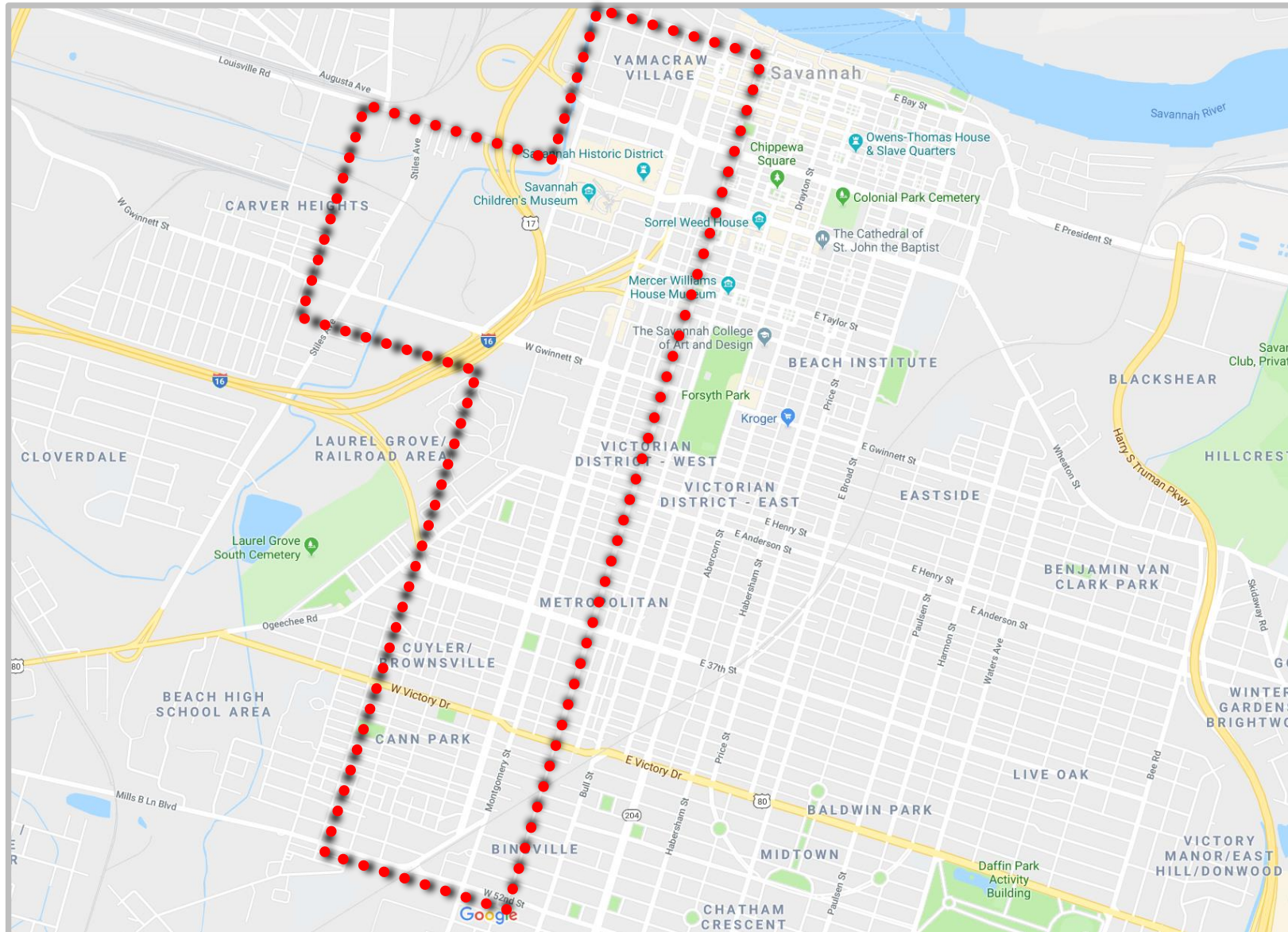
Hummingbird



symbi**osc**ity****
PEOPLE + PLACE + PLANET

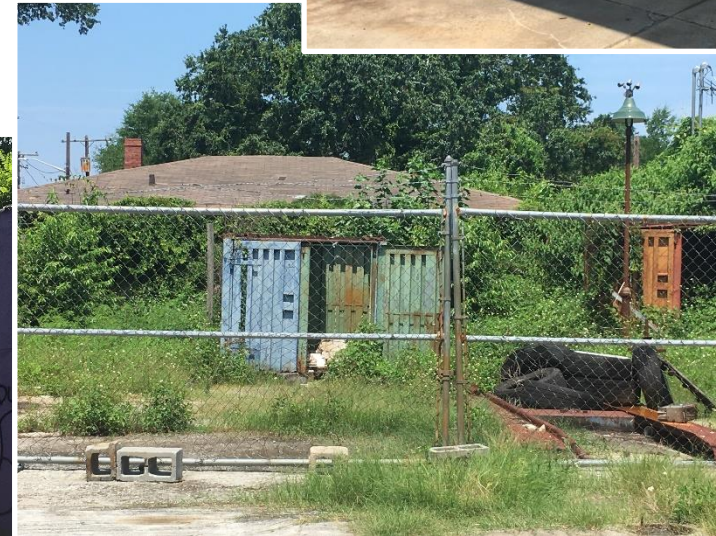


Savannah, Georgia Target Area



Corridor Details

- > Two-mile corridor with history of commercial and industrial use
- > Montgomery Street was previously the route for US HWY 17 into South Carolina
- > Western edge of the Historic District
- > Significant socio-economic disparities



Long-term Intent

Develop a program over the next 5-10 years, strategically applying for Brownfield grants that will:

- > Leverage Community Input & Brownfield Advisory Board
- > Identify & assess contaminated properties
- > Enhance community engagement
- > Improve community health
- > Clean up environmental contamination
- > Reduce the number of blighted properties
- > Leverage local economic redevelopment incentives

A Savannah Leveraged Vision

FY2018 Assessment Grant: \$300,000



FY2021 Cleanup Grant: \$500,000



FY2021 Assessment Grant: \$300,000



FY2021 Job Training Grant: \$200,000



FY2022 Revolving Loan Funding Grant:
~\$1 million

***One Brownfield
Assessment Dollar
Leverages \$16.11*:
Therefore ~\$2.3 million in
Brownfield Grant Funds could
yield >**\$37 Million** in Private
Investment***

> **<https://www.epa.gov/brownfields/brownfields-program-accomplishments-and-benefits>*



2019 Southeast Brownfields Conference

IV. A Local Perspective

Dr. Mildred McClain, Harambee House



Citizens for Environmental Justice
Harambee House, Inc



Thank You!

Questions?

Jasmin Muriel
Environmental Protection Specialist
Office of Environmental Justice
Phone: 202.564.4287
Muriel.Jasmin@epa.gov

